

2005
INTERNATIONAL 420 CLASS WORLD CHAMPIONSHIP
INTERNATIONAL 420 CLASS LADIES WORLD
CHAMPIONSHIP

SOCIETE DES REGATES DE BREST
BREST – FRANCE
JULY 27th TO AUGUST 5th

NOTICE OF RACE

1 THE EVENT

The **2005** International **420** World Championship, International **420** Ladies World Championship will be held at Brest in France from the July 27th to the August 5th.

The races will be sailed in the waters of Brest Bay. (See appendix **A**)

2. ORGANISING AUTHORITY

The championship is organised by
The Société des Régates de Brest (SRB),
The French 420 class association UNIQUA
and the French Sailing Federation Fédération Française de voile,
in conjunction with the International 420 Class Association.

3 RULES

The regatta will be governed by:

- The “Rules” as defined in the **ISAF** Racing Rules of Sailing.
- The **ISAF** Equipment Racing Rules of Sailing.
- The Measurement Instructions.

4. LANGUAGE DURING THE EVENTS

The official language, during these events, is English. In case of conflict between different translations the English version shall prevail.

5. ADVERTISING AND BOW NUMBER

The World Championship, Ladies Word Championship are classified category **C**, in accordance to the **ISAF** Regulation 20-advertising code.

Boats may be required to display on each side of the hull:

- A bow number (See Class rule. **C.3**).

- Advertising of the event sponsor.

6. EVENTS FORMAT

6.1. WORLD CHAMPIONSHIP

The Mens' World Championship shall be competed with:

- Qualifying series to divide the fleet into **two** fleets (**Gold** and **Silver**)
- Final series in **two** separate fleets (**Gold** and **Silver**).

6.2. LADIES WORLD CHAMPIONSHIP

The Ladies World Championship shall be competed in **one** separated fleet.

7. EVENTS SCHEDULE

Day 1 July 27 th	Registration and measurement	10 h / 17h
Day 2 July 28 th	Registration and measurement	10 h / 17h
Day 2 July 28 th	Opening ceremony	19 h / 20h
Day 3 July 29 th	Registration and measurement	10 h / 17h
Day 3 July 29 th	Practice Race: warning signal	14 h
Day 4 July 30 th	Qualifying series-Men World, Ladies World races	10 h 30
Day 5 July 31 st	Qualifying series-Men World, Ladies World races	10 h 30
Day 6 August 1 st	Lay day	
Day 7 August 2 nd	Qualifying/Final series- World, Ladies World races	10 h 30
Day 8 August 3 rd	Qualifying/Final series- World, Ladies World races	10 h 30
Day 9 August 4 th	Qualifying/Final series- World, Ladies World races	10 h 30
Day 10 August 5 th	Qualifying/Final series- World, Ladies World races Prize Giving and Closing Ceremony.	10 h 30 17 h 00

8. ELIGIBILITY

The championships are only open to International **420** dinghies.

The **ISAF** competitors eligibility code (**ISAF Regulation 19**) shall apply. Each competitor shall be a member of his National Class Association and, if relevant, of his National Authority. Each competitor shall be entered by his National **420** Class Association or by his Federation/National Authority if such an Association does not exist.

9. ENTRIES AND RESTRICTIONS

9.1. WORLD CHAMPIONSHIP

Entries for the World Championship shall be limited in accordance with the International **420** Class Association Guidelines: **7** boats for each country and **14** boats for the host country in each championship.

Each entitled crew of the International **420** World Championship will be authorised to defend his title in addition to the teams defined above. This shall apply only if the crew is still the same (crew and helmsman).

Only men and mixed crews are authorised to enter the World Championship

9.2. LADIES WORLD CHAMPIONSHIP

Entries for the Ladies World Championship shall be limited in accordance with the International **420** Class Association Guidelines: **7** boats for each country and **14** boats for the host country in each championship.

Each entitled crew of the International **420** Ladies World Championship is authorised to defend her title in addition to the teams defined above. This shall apply only if the crew is still the same (crew and helmsman).

Only ladies crews are authorised to enter the Ladies World Championship.

10. REGISTRATION

Preliminary and final entry forms shall be sent to:

Catherine DODDS
Barnside, Willow Rd, Great Mongeham,
Deal, Kent, CT14 0HN
ENGLAND
Phone : +44 1304 361 016 / + 44 7710 912 742
Fax : + 44 8700 524 724
Catherine@barnside.demon.co.uk

before March 27th for the Preliminary Entry Forms (see appendix B)

and before June 27th for the Final Entry Forms (see appendix C or D)

Entry fee per boat : **250.00 EUROS**.

Entry fees shall be paid in EUROS by swift to:

International 420 Class Association
Account No : 210 - 0467 - 180 - 80
Fortis Banque, Agence du Fort Jaco,
Chaussee de Waterloo 1341 A, 1180 Bruxelles, BELGIUM
IBAN : BE47 2100 4671 8080
SWIFT CODE : GEBABEBB

before June 27th.

ALL BANK TRANSFERS SHOULD BE CLEARLY ANNOTATED WITH THE NAME OF THE COUNTRY, THE EVENT AND THE SAIL NUMBERS AND/OR NAMES OF THE COMPETITORS.

Each entry and fee not received by the June 27th may not be accepted and shall be subject to a supplementary fee of 50 EURO.

11. DISCLAIMER

Competitors participate in the regatta entirely at their own risk. See rule 4, Decision to race

The organizing authority will not accept any liability for material damage or personal injury or death sustained in conjunction with or prior to, during, or after the regatta.

12. MEASUREMENT

All boats shall be measured before racing in the days specified in this notice of race.

Each boat shall have a valid Measurement Certificate, which must be produced at registration.

Random checks may be made at any time during the championships.

13. SAILING INSTRUCTIONS and MEASUREMENT INSTRUCTIONS

The Sailing instructions will be available at the race office for each competitor and Team Leader after the final country's registration has been completed, The Measurement Instructions will be available for each competitor and Team Leader at the race office at registration.

14. LADIES CREWS IDENTIFICATION

Each ladies crew shall have a square **25 cm** red diamond mark on the head of the main sail for identification.

15. SAFETY REGULATIONS

Competitors shall wear a life-jacket or other adequate personal buoyancy at all time when afloat (See Class rule **C.4**).

Wet suits and dry suits do not constitute adequate personal buoyancy.

16. DRUG TESTING

Competitors are required to comply with the **RRS 5** and **ISAF Regulation 21** which bans the use of drugs.

Drugs testing may take place during the event.

17. COURSES

The format of the course shall be a trapezium. (see appendix F)

The target time of a race shall be around **60** minutes.

18. JURY, PROTESTS and PENALTIES FOR BREAKING RULES OF PART 2

An International Jury shall be appointed, in accordance to **RRS Appendix N**, and its decisions shall be final and not subject to appeal (**RRS 70.4**).

19. SCORING WORLD AND LADIES WORLD CHAMPIONSHIPS :

The low point scoring system of appendix **A** shall apply (**RRS Appendix A**).

19.1 WORLD CHAMPIONSHIP

♦ **Qualifying series :**

- a. There will be **6** Qualifying series races with **one** discard.
- b. The qualifying series results shall be converted to race scores. These race scores shall be treated in all aspects as a race score for the final series (race **Q**).
- c. The result of each round in the Qualifying series will be valid when all the boats complete this round.

♦ **Final series :** There will be **11** races plus the Qualifying series result (total 12 scores in the Results).

- a. **Two (2)** final series (**3** results in the final series including the Race **Q**), are required to be completed to constitute a final series.
- b. When **3** races have been completed in the final series, all Races in both the Qualifying and final series count towards a boat's score, excluding that boat's score.
- c. When **4 to 7** final series races have been completed (**5-8**, Including Race **Q**) a boat's score shall be the total of her race Score in the final series excluding her worst score.
- d. When **8 or more** final series have been completed (**9-12**, Including Race **Q**) a boat's score shall be the total of her race score in the final series excluding her two worst scores.

No more than **three** races can be competed each day.

19.2 LADIES WORLD

The number of races will be **12**.

A minimum of **5** races completed is required to award the Championship.

If **5 to 8** races are sailed there will be **one** discard.

If **9 to 12** races are sailed there will be **two** discards.

No more than **three** races can be competed each day.

20. PRIZES

The first **three** crews in **Gold**, **Silver** and **Ladies** fleets ranking lists shall be given a trophy.

The first **three** crews in **World** and **Ladies World** championships shall receive a **gold**, **silver** and **bronze** medal.

At least, the first 20% of crews in the **Gold** and **Ladies** ranking lists shall be given a souvenir of the event.

The prizes are given to both member of a crew.

21. TITLES

The title of International **420** Class World Champion will be awarded to the first team in the **Gold** fleet ranking list of the World Championship.

The title of International **420** Class Ladies World Champion will be awarded to the first team in the ranking list of the Ladies World Championship.

22. ANTHEM

For the prize giving ceremony, each team is leader required to bring his national anthem (short version) on compact disc (CD).

23. SUPPORT BOATS

Each coach boat of a national team shall fly a **20 x 30 cm** flag displaying their national letters (according to **ISAF RRS**) black on white.

24. INSURANCE

Each competitor shall produce on registration, an evidence of valid third party insurance with a minimum cover of **1.500.000** EURO or the equivalent in other currencies.

Each participant warrants the suitability of his or her boat for the event.

25. RIGHTS TO USE NAMES & LIKENESSES

Competitors automatically grant to the organizing authority without payment the right in perpetuity to make, use and show any motion pictures, still pictures and live, taped or filmed television of or relating to the event.

1. Charter Boats

Lenman Gold 2005 boats can be chartered from Topregate dealer ullmanfrance@topregate.com

Boats will be available from July 20th to August 5th at the cost of 1500 Euros.

Charter boat includes:

- Foils (rudder and centre board) N°1 foils make
- Spars (mast, boom, spinnaker boom) make superspar mast or proctor mast depending on your choice.
- Ropes
- Jib tension
- Trolley
- Covers (up, down and rudder cover)

The competitors have to provide their own sails.

2 Weather information : Summer weather conditions

During the event period, the general weather conditions are West to North West synoptic wind.

In the afternoon, thermal wind changes the direction and speed of the synoptic wind.

Predicted usual wind speed during event period is 10 to 18 Kt

Predicted usual wind direction during event period is West to North West

Complete wind daily information is available from the club Website : <http://420worlds.srbrest.com>

3 Racing area :

Tide : The event will take place during neap tides

Currents : The current related to the neap tide on the racing area will be less than 1 Kt

Depth : Sea depth on the racing area is 10 to 25 meters

Complete tidal daily information is available from the club Website : <http://420worlds.srbrest.com>

4 Accommodation :

Many hotels 2 to 3 stars , Mobile Homes, Camping site home and flat renting are available in a short distance from the event venue.

A camping car area will be available on the event venue

Complete information on accommodation is available on the club Website :

<http://420worlds.srbrest.com>

As Brest is a popular holiday venue, we strongly recommend to have very early booking for your accommodation

Your contacts for accommodation are :

Priority to communication via email is strongly recommended for any query concerning accommodation

Michel Debellefon
Société des Régates de Brest
Port de plaisance du Moulin Blanc
29200 Brest France
Phone : + 33 6 19 85 18 42
Fax : + 33 2 98 41 65 77
hosting@srbrest.com

Christophe Jacquet
Société des Régates de Brest
Port de plaisance du Moulin Blanc
29200 Brest France
Phone : +33 2 98 02 53 36 / + 33 6 72 11 07 53
Fax : + 33 2 98 41 65 77
cj@srbrest.com

Philippe Leschaeve
Société des Régates de Brest
Port de plaisance du Moulin Blanc
29200 Brest France
Phone : + 33 2 98 33 69 49 / + 33 6 70 01 45 19 (Mobile)
pleschaeve@hotmail.com

5 Chandlers and repairs

Major Sail Makers are operating on Brest Area

- Voilerie INCIDENCE.
- Voile Océan (North Sails).

- Yucca Voiles.
- Le Bihan Voiles.

Chandler shops located near the event are

- Uship
- Accastillage Diffusion
- Direct Sailing
- Comptoir Maritime
- Occase Mer

These chandlers are dealers of the main manufacturers.

Hull and Rigging repair services are also available.

6 General Information

By its unique geographical position, at the most Western point of Europe, Brest (340 000 inhabitants) one of Brittany's biggest cities is known throughout the world.

Here the sea is a historical and natural vocation but it is not the only one, as Brest participates with Brittany in telecom and new technologies and the powerful French food processing industry.

For three centuries, it has been home to the biggest military shipyard in France, first royal then national. Brest has through necessity, diversified economically while maintaining its historic crafts.

Brest has a leading position, nationally as well as internationally, in everything related to the sea. With its university and its European maritime institute, with the IF RTP, IFREMER, the SHOM, the CEDRE, the CETMEF and its Engineering Institutes both civil and military, Brest has research teams in most maritime fields. Alongside these institutes there are numerous companies with skills in diversified technologies.

Its naval primacy is inseparable from its well known Bay, whose water covers an area of 15000 hectares. It has the advantage of being free of rocks. Connected to the open sea by only one narrow corridor, the "Goulet", sailing is easy whatever the weather. For the city this Bay is a wonderful natural area. The Local Authority helps develop the economy, sporting activity, fishing, agriculture and tourism while still taking care of the environment.

The SRB (Société des Régates de Brest), best French sailing club in 2002, and its competent and experienced volunteers are keen to host major sailing events in partnership with the Department of Sports and Nautical Activities of Brest City Council (third nautical organisation in France with a permanent staff of thirty persons).

With its leading position in Olympic sailing and ocean racing, Brest has been organising major sailing competitions since 1976. Brest Bay has already hosted seven World Championships, six European Championships and twenty-seven French

Championships. It has also welcomed the start and finish of the “Solitaire du FIGARO”, the “6.50 Single-Handed Transatlantic Race”, the “EDHEC Race” as well as Transoceanic races and thousands of other less well-known but nonetheless well attended races.

7 Organising committee

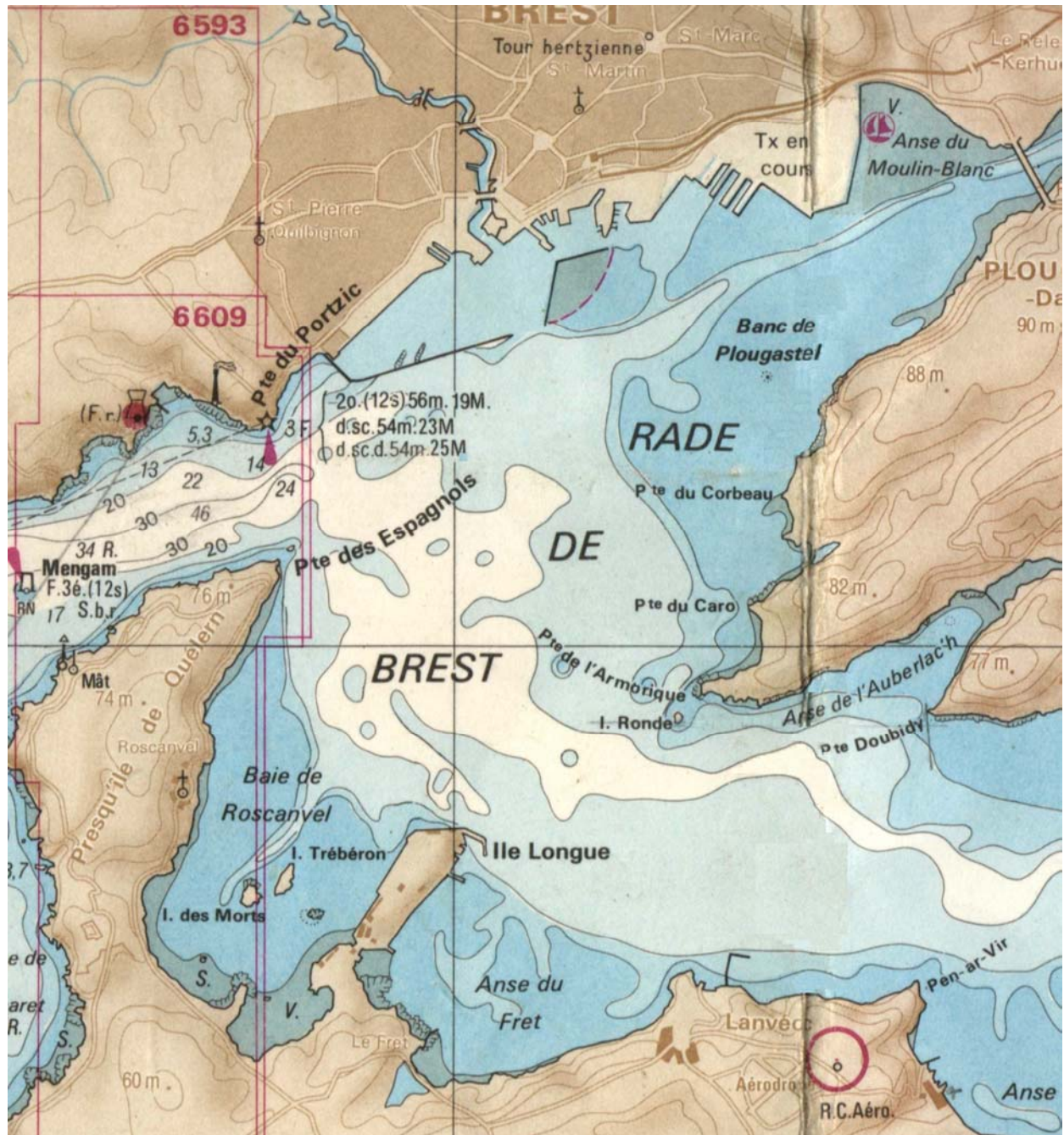
Christophe Jacquet
Club Manager
Société des Régates de Brest
Port de plaisance du Moulin Blanc
29200 Brest France
Phone : +33 2 98 02 53 36
Fax :+ 33 2 98 41 65 77
cj@srbrest.com

Loïc Pajot
Club Chairman
Société des Régates de Brest
Port de plaisance du Moulin Blanc
29200 Brest France
Phone : +33 2 98 02 53 36
Fax :+ 33 2 98 41 65 77
Loicpajot@wanado.fr

Philippe Leschaeve
Member of the board responsible for the event
Société des Régates de Brest
Port de plaisance du Moulin Blanc
29200 Brest France
Phone : + 33 2 98 33 69 49 / + 33 6 70 01 45 19 (Mobile)
pleschaeve@hotmail.com

Appendix A

RACING AREA



BREST JULY 27th August 5th 2005

**International 420 Class World Championship
International 420 Class Ladies World Championship**

PRELIMINARY ENTRY FORM

PLEASE COMPLETE IN CAPITAL LETTERS

COUNTRY		
REPRESENTATIVE OF: -NATIONAL 420 CLASS ASS. OR -NATIONAL AUTHORITY (please delete as appropriate)	Family name:	
	First name :	
	Position :	
	Address :	
	Telephone/Fax :	
	E-mail :	
NO. OF BOATS TO BE ENTERED IN 420 CLASS WORLD CHAMPIONSHIP (MAXIMUM 7 or 14 FOR HOSTING COUNTRY) :		BOATS
NO. OF BOATS TO BE ENTERED IN 420 CLASS LADIES WORLD CHAMPIONSHIP (MAXIMUM 7 or 14 FOR HOSTING COUNTRY) :		BOATS
DATE :	SIGNATURE :	

Post Entry forms before March 27th 2005 to :

Catherine DODDS

Barnside, Willow Rd, Great Mongeham,

Deal, Kent, CT14 0HN

ENGLAND

Phone : +44 1304 361 016 / + 44 7710 912 742

Fax : + 44 8700 524 724

Catherine@barnside.demon.co.uk

Appendix C

BREST JULY 27th August 5th 2005

International 420 Class World Championship

FINAL ENTRY FORM
COUNTRY: _____

PLEASE COMPLETE IN CAPITAL LETTERS

	Sail No.	Helmsman	Male\Female	Crew	Male\Female
1					
2					
3					
4					
5					
6					
7					

DATE OF ENTRY PAYMENT INTO INTERNATIONAL 420 CLASS ASSOCIATION
BANK ACCOUNT: _____ / _____ /2005 AMOUNT: _____ EUROS

**ALL BANK TRANSFERS SHOULD BE CLEARLY ANNOTATED WITH THE NAME
OF THE COUNTRY, THE EVENT AND THE SAIL NUMBERS AND/OR NAMES OF
THE COMPETITORS.**

APPROVED BY: _____ ON THE BEHALF OF THE
NATIONAL 420 CLASS

SIGNATURE OF REPRESENTATIVE: _____

Post Entry forms before June 27th 2005 to :

Catherine DODDS
Barnside, Willow Rd, Great Mongeham,
Deal, Kent, CT14 0HN
ENGLAND
Phone : +44 1304 361 016 / + 44 7710 912 742
Fax : + 44 8700 524 724
Catherine@barnside.demon.co.uk

Appendix D

BREST JULY 27th August 5th 2005

International 420 Class Ladies World Championship

FINAL ENTRY FORM
COUNTRY: _____

PLEASE COMPLETE IN CAPITAL LETTERS

	Sail No.	Helmsman	Crew
1			
2			
3			
4			
5			
6			
7			

DATE OF ENTRY PAYMENT INTO INTERNATIONAL 420 CLASS ASSOCIATION
BANK ACCOUNT: _____ / _____ /2005 AMOUNT: _____ EUROS

**ALL BANK TRANSFERS SHOULD BE CLEARLY ANNOTATED WITH THE NAME
OF THE COUNTRY, THE EVENT AND THE SAIL NUMBERS AND/OR NAMES OF
THE COMPETITORS.**

APPROVED BY: _____ ON THE BEHALF OF THE
NATIONAL 420 CLASS

SIGNATURE OF REPRESENTATIVE: _____

Post Entry forms before June 27th 2005 to :
Catherine DODDS
Barnside, Willow Rd, Great Mongeham,
Deal, Kent, CT14 0HN
ENGLAND
Phone : +44 1304 361 016 / + 44 7710 912 742
Fax : + 44 8700 524 724
Catherine@barnside.demon.co.uk

Appendix E

BREST JULY 27th August 5th 2005

**International 420 Class World Championship
International 420 Class Ladies World Championship**

REGISTRATION FORM

This form will be brought by the sailors to registration

PLEASE COMPLETE IN CAPITAL LETTERS

SAIL NUMBER

	<i>HELM</i>	<i>CREW</i>
Family Name		
First Name		
Home Address		
Date of Birth		
SEX (M/F)		
Email Address		
Name of Team Manager		
ISAF Sailor No.		
Do you have a medical condition of which the organisers should be aware?		

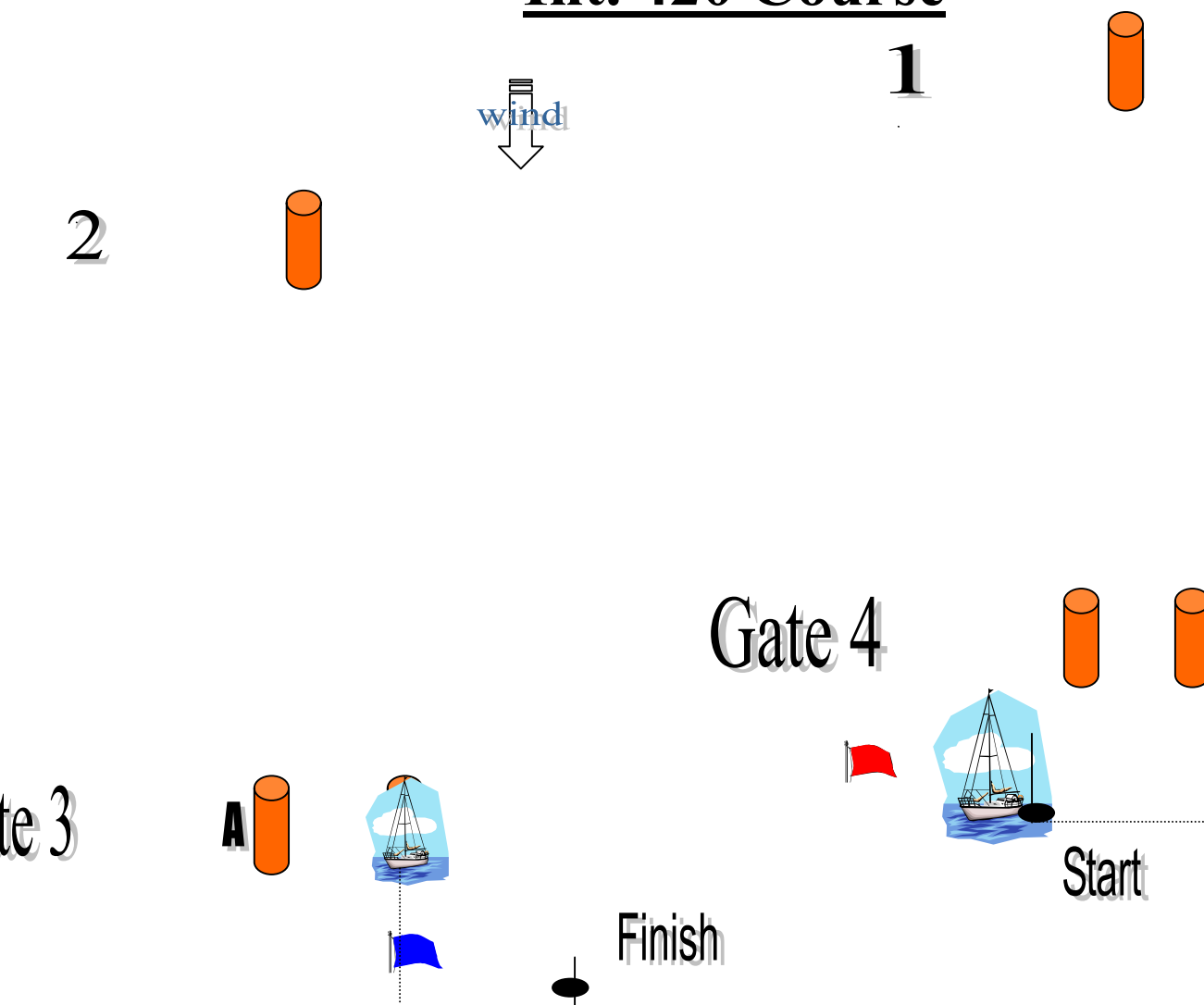
Signatures		
-------------------	--	--

APPROVED BY: _____ ON THE BEHALF OF THE NATIONAL 420 CLASS

SIGNATURE OF REPRESENTATIVE: _____

Appendix F

Int. 420 Course



INNER; Start-1-Gate 4-1-2-3A-Finish.

OUTER;Start-1-2-Gate 3-2-3A-Finish.