

RYA Youth Championships and Trials
Hayling Island Sailing Club
12 - 18 April 2003

Sailing Instructions

1 Rules

- 1.1 The Racing will be governed by the 'rules' as defined in the Racing Rules of Sailing.

2 Additional Identification

- 2.1 Laser Radials shall display at the top of the mast, while racing, a coloured ribbon corresponding to the group or fleet she has been assigned to (See Attachment A). Before going afloat competitors shall collect their ribbon from the RYA caravan, and return it on completion of the qualifying and final race series.
- 2.2 Girls sailing Laser Radials will be issued with pink streamers at registration. These shall be displayed while racing at the top of the mast.
- 2.3 On the second and subsequent days' racing decals will be issued at 09:00 to the boats in each fleet lying in overall first place (yellow), second (blue) and third (red). These shall be displayed on each side of the mainsail with the edges 10cm below the sail number and 50cm from the leech. Decals shall be removed the following day before launching unless the previous day's championship position has been retained.
- 2.4 Boats whose crew fail to comply with this SI shall accept the fine penalty in SI 16.3. Action or inaction by the race committee under this SI shall not be grounds for redress under RRS 62.1(a).

3 Cameras And Electronic Equipment

- 3.1 Competitors may be required to carry on-board cameras, sound equipment or positioning equipment as required by the organizing authority.

4 Notices to Competitors

- 4.1 Notices to competitors will be posted on the official notice board, located in the Clubhouse.

5 Changes to Sailing Instructions

- 5.1 Any change to the sailing instructions will be posted on the official notice board at least two hours before the advertised warning signal of the race or races concerned, and signalled by displaying flag L ashore (SI 6.4). However, any change to the schedule of races will be posted by 20:00 hours on the day before it will take effect.

6 Signals Made Ashore

- 6.1 Signals made ashore will be displayed on the HISC signals mast.
- 6.2 Signals displayed over a class flag apply to that class only.
- 6.3 When flag AP is displayed ashore race signal AP is changed as follows:
- (a) Except when racing is held in Chichester Harbour '1 minute' is replaced with 'not less than 60 minutes'.
 - (b) When racing is held in Chichester Harbour '1 minute' is replaced with 'not less than 30 minutes'.
- 6.4 Flag L will be displayed with a numeral pennant indicating the latest notice posted. The sequence will restart after 9.
- 6.5 No boat shall leave the shore until its class flag (SI 9) is displayed with two sound signals. Competitors may tally out (SI 20.2) before the class flag is displayed. The warning signal for the first race of the day will be made not less than 60 minutes after this signal, or not before the scheduled time, whichever is later.
- 6.6 Flag P displayed with the class flag means the class will race in Chichester Harbour. The warning signal will be made not less than 30 minutes after this signal, or not before the scheduled time, whichever is later.
- 6.7 When Flag T is displayed, support boats may tow competitors to the race areas (See SI 24.2).

7 Qualifying Series and Final Series

- 7.1 The Laser Radial class only will sail a qualifying/finals format as described in Attachment A. All other classes will race in single fleets and Attachment A will not apply to them.

8 Schedule of Races

- 8.1 Racing is scheduled as follows:

Date	29er Class	Other Classes	Time of first warning signal
Monday 14 April	Practice start	Practice start	10:55
	4 races	3 races	11:25
Tuesday 15 April	4 races	3 races	10:55
Wednesday 16 April	4 races	3 races	10:55
Thursday 17 April	4 races	3 races	10:55
Friday 18 April	2 races	2 races	10:55

- 8.2 Subsequent races on each day will start as soon as possible after the finish of the previous race.
- 8.3 One extra race per day (2 for 29ers) may be sailed.

9 Class Flags

- 9.1 420, 29er, Laser 1, Hobie 16, and Mistral classes will use flags displaying class insignia. The Laser 1 flag is white with red logo
- 9.2 Laser Radial qualifying groups will use coloured flags of the group colour. Warning signals will be the two flags of the groups racing together.
- 9.3 Laser Radial final series class flags will be:
- Gold Fleet YELLOW flag
 - Silver Fleet BLUE flag

10 Racing Area

- 10.1 Racing will take place in Hayling Bay and Chichester Harbour.
- 10.2 The chart in Attachment B shows the intended location of racing areas *Alpha*, *Bravo*, and *Charlie*.
- 10.3 Classes are assigned to racing areas as follows:
- | | |
|---------|--------------------------|
| Alpha | Laser 1 and Laser Radial |
| Bravo | 420 and 29er |
| Charlie | Hobie and Mistral |

11 The Courses

- 11.1 The diagrams in Attachment C show the courses, including the course signals, the order in which marks and gates are to be passed, and the side on which each mark and gate mark is to be left.
- 11.2 Gates (3a-3b) and/or (4a-4b) will be laid. When there is a gate, boats shall sail between the gate marks from the direction of the previous mark and round either gate mark.
- 11.3 The approximate magnetic bearing from the start to mark 1 will be displayed no later than the warning signal.

12 Marks

- 12.1 Marks 1, 2, 3a, 3b, 4a, 4b, and 5 will be inflatable pillar buoys with RYA logo.
- 12.2 Starting marks will be a race committee vessel, including any attached boats or buoys, at the starboard end, and a dan-buoy with an orange flag, or an orange inflatable buoy, at the port end.
- 12.3 Finishing marks will be a race committee vessel and a dan-buoy with a blue flag.

13 The Start

- 13.1 Races will be started in accordance with RRS 26.
- 13.2 The starting line will be between a staff displaying an orange flag on the race committee vessel and the start line outer distance mark.
- 13.3 If Flag F is displayed on the race committee vessel with one sound signal between races, it will be removed after four minutes with one sound signal, followed one minute later by the warning signal for the next race.
- 13.4 Boats whose warning signal has not been made shall avoid the starting area.
- 13.5 A boat starting later than 4 minutes after her starting signal will be scored Did Not Start. This changes RRS A4.1.
- 13.6 **Practice Starts:**
 - (a) When practice starts are scheduled (SI 8.1), the race committee vessel will display an orange flag over flag U. The practice starting line will be between the staff displaying this signal and the start line outer distance mark.
 - (b) SIs 13.1 and 13.4 will apply to practice starts.
 - (c) Boats shall race for 1 minute after a practice start, after which they shall avoid the starting area.

14 Change of Course after the Start

- 14.1 A change of course after the start will be signalled before the leading boat has begun the leg, although the new mark may not then be in position. Any mark to be rounded after rounding the new mark may be relocated to maintain the original course configuration without a further course change signal. This changes RRS 33.

15 The Finish

- 15.1 The finishing line will be between a staff displaying an orange flag on the finishing race committee vessel and the finish line outer distance mark.
- 15.2 When a race is shortened at a mark that is designated a "gate", the finishing line will be between the two buoys comprising the gate. This changes Race Signal S.

16 Penalty System

- 16.1 For the Hobie 16 and 29er classes RRS 44.2 is changed so that the 720° turn is replaced by a 360° turn.
- 16.2 A boat that has taken a penalty or retired under RRS 31.2 or 44.1 shall complete an acknowledgement form at the race office, within the protest time limit.
- 16.3 A fine penalty will be a contribution to the RNLI, made before the protest time limit, of £5.00 for the first offence, £10.00 for the second, and so on, provided for in RRS 64.1(a).
- 16.4 Immediate Penalties for Breaking RRS 42: RRS Appendix N will apply.

17 Time Limit

- 17.1 The time limit for a boat will be 20 minutes after the first boat finishes after a valid start, except that if no boat finishes within 90 minutes of a valid start, the race will be abandoned.
- 17.2 If no boat has rounded the first mark within 30 minutes after a valid start, the race will be abandoned.

18 Protests

- 18.1 Protests forms are available at the race office. Protests shall be delivered there within the protest time limit.
- 18.2 The protest time limit for each class will be posted on the official notice board each day with at least 30 minutes notice.
- 18.3 Notices will be posted on the official notice board within 30 minutes of the protest time limit to inform competitors of hearings in which they are parties or named as witnesses. This is the notice under RRS 63.2.
- 18.4 Notices of protests by the race committee or jury will be posted on the official notice board to inform boats under RRS 61.1(b).
- 18.5 On the last day of scheduled racing, a party to a hearing may ask for a re-opening no later than one hour after being informed of the decision. This changes RRS 66.

18.6 Protests under SIs 2, 13.4, 20, 24, 25 may be brought only by the race committee or jury and not by a competitor. This changes RRS 60.1.

18.7 Decisions of the jury will be final as provided in RRS 70.4.

19 Scoring

19.1 The Low Point scoring system of Appendix A will apply.

19.2 The number of races required to be completed to constitute a championship are:

- (a) For the 29er Class: 7 races.
- (b) For the Laser Radial Class: 5 races, which shall consist of the qualifying races completed by each fleet and a minimum of one final race completed by the Gold fleet.
- (c) For all other classes: 5 races.

19.3 Each boat's series score will be the total of her race scores, except that discards will be applied as follows:

29er Class	All other Classes	Discards
8 races completed	6 races completed	1 discard
12 races completed	9 races completed	2 discards

19.4 In the Laser Radial Championship:

- (a) A qualifying series race will not count until all qualifying groups have completed that race.
- (b) One score will be excluded to calculate the division into the finals fleets if five or more qualifying races are completed.
- (c) All qualifying races and final races will count for total points in the championship.
- (d) Different final series fleets need not have completed the same number of final races.

20 Safety Regulations

20.1 Life-jackets or other adequate personal buoyancy shall be worn by all competitors at all times while afloat. Wet suits and dry suits are not adequate personal buoyancy. Flag Y will not be displayed. This changes RRS 40 and Race Signal Y.

20.2 **Tallies.** The requirements of this SI are specified for the safety of competitors.

- (a) The Tally System to check-in and check-out competitors will be located at the top of the south launching ramp (known as tally control).
- (b) Tallies comprise a pair of numbered and colour coded rubber wrist bands (green for helms and red for crews). Tallies must be worn visibly, over clothing, on the right wrist by both helm and crew while afloat.
- (c) Both helm and crew shall individually tally-out before racing by personally collecting their tally, and individually tally-in immediately on returning to shore after racing by returning the tally personally to tally control. Tally numbers will be issued at registration.

20.3 Boats whose crew fail to comply shall accept the fine penalty in SI 16.3. Infringements will be posted on the official notice board before the protest time limit. This changes RRS 63.1.

21 Replacement of Crew or Equipment

21.1 Substitution of competitors will not be allowed without prior written approval of the Race Committee. Requests shall be submitted in writing using forms available from the race office.

21.2 Substitution of damaged or lost equipment will not be allowed unless approved by the Race Committee before the protest time limit on the day the equipment has failed or been damaged. Requests for substitution shall be submitted in writing using forms available from the race office. Failure to do so, the refusal of the request, or the replacement equipment not complying with the class rules, will result in the boat being scored DNE for the race or races affected.

21.3 Sail numbers other than those required by RRS G1.1(c) will only be allowed in exceptional circumstances and with the permission of the race committee sought according to SI 21.2.

22 Equipment and Measurement Checks

- 22.1 Any boat or equipment may be checked for compliance with class rules and sailing instructions at any time.
- 22.2 On the water, a boat can be instructed by a race committee measurer to proceed immediately to a designated area for inspection.
- 22.3 The maximum weight under RRS 43.1 (b) (*weight of clothing and equipment*) will be 10 kilograms.

23 Official Boats

- 23.1 Official boats will be marked as follows:

Alpha	Orange flag with RYA logo
Bravo	Yellow flag with RYA logo
Charlie	Light blue flag with RYA logo
- 23.2 Refreshment boats will display flags marked with the word 'Food'.

24 Support Boats

- 24.1 There shall be no communication with competitors while afloat except by official boats.
- 24.2 Only official boats may tow competitors to and from the race area, unless the race committee gives permission by displaying flag T ashore or on the race committee vessel.
- 24.3 Food and drink may only be placed on refreshment boats.
- 24.4 Gear shall not be placed on any boat.
- 24.5 Support boats shall remain more than 50 metres from the course area.
- 24.6 The penalty for failing to comply with this SI will be applied to the competing boat associated with the infringing support boat and a scoring penalty calculated using the formula in rule 44.3 will be applied to the race sailed nearest in time to the incident.

25 Trash Disposal

- 25.1 Boats shall not discharge trash into the water. Trash may be deposited on support and official boats.
- 25.2 Boats whose crew fail to comply with this SI shall accept the fine penalty in SI 16.3. This changes RRS 63.1.

26 Radio Communication

- 26.1 A boat shall neither make radio transmissions while racing nor receive radio communications not available to all boats. This restriction includes cellular telephones.

27 Prizes

- 27.1 Prizes are detailed in the Notice of Race.

Attachment A – Racing Format for Laser Radial Class

The Laser Radial class will sail in a qualifying series and finals series.

Qualifying Format for Laser Radial Class:

- (a) The fleet will be divided into four similar sized groups, Yellow, Green, Red, and Blue. Allocation to groups will be decided by seeding by the selectors, followed by a draw for those not seeded. A list of boats in each group will be available at registration.
- (b) There will be up to 6 qualifying races. Groups will race with each other in rotation as follows:

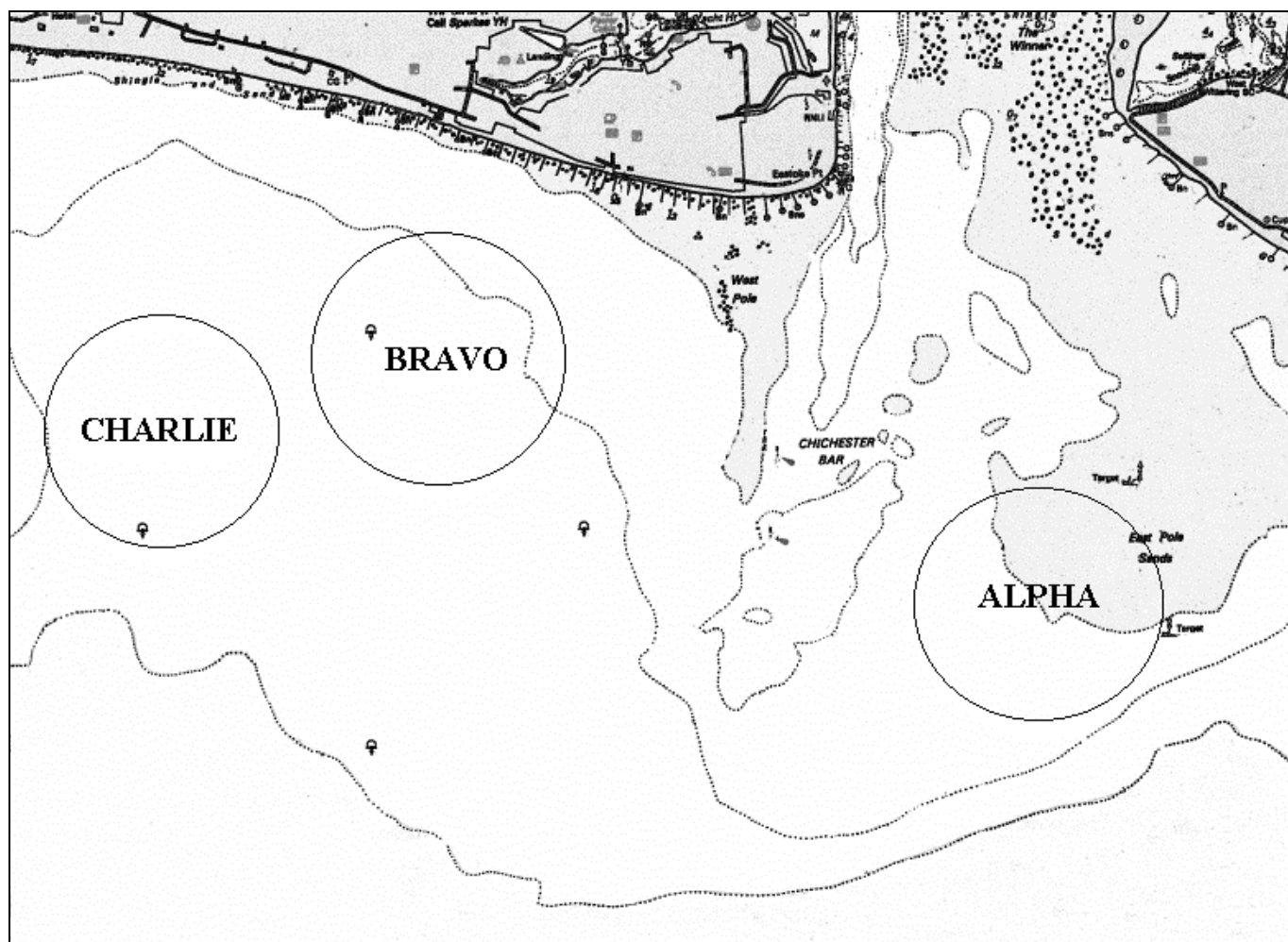
Race No	First Flight	Second Flight
1	Yellow & Green	Red & Blue
2	Yellow & Red	Green & Blue
3	Yellow & Blue	Green & Red
4	Yellow & Green	Red & Blue
5	Yellow & Red	Green & Blue
6	Yellow & Blue	Green & Red

- (c) The qualifying series will end after 2 scheduled days of racing and the completion by each group of a minimum of 3 qualifying races. If 3 qualifying races are not completed by each group in 2 days then the qualifying series will continue until a minimum of 3 races are completed.

Finals Format for Laser Radial Class:

- (a) Boats will be assigned to one of two approximately equal sized fleets, Gold and Silver. Boats with the best qualifying-series scores will race all final-series races in the Gold fleet, the remainder will race in the Silver fleet. If there is an odd number of boats then the additional boat will sail in the Gold Fleet. If ties are not broken between boats at the boundary between Gold and Silver and one boat should have sailed in the Gold Fleet then those tied boats will all sail in the Gold fleet. A list of boats in each fleet will be posted on the official notice board at least two hours before the scheduled start time for the first race of the final series.
- (b) Any recalculation of qualifying series scores after boats have been assigned to final-series fleets will not affect the assignments except that a redress decision may promote a boat to the Gold fleet.

Attachment B - Racing Areas.

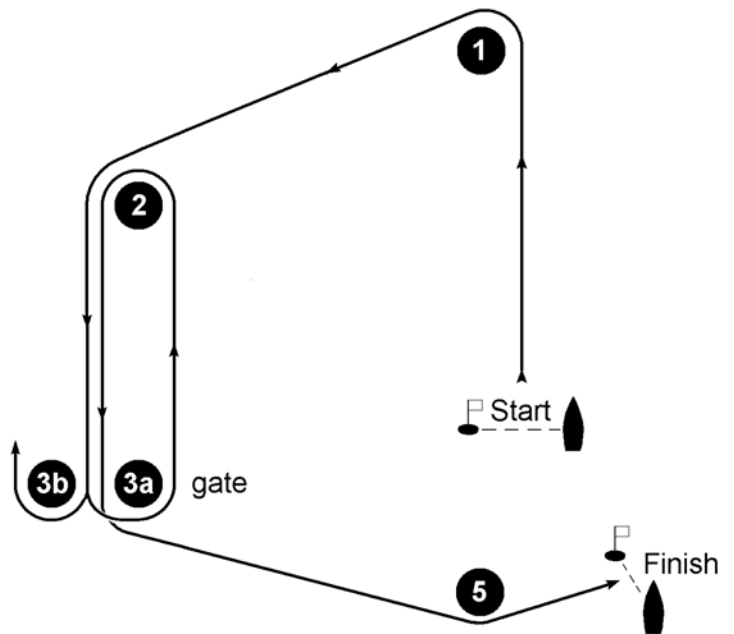


Attachment C - Courses

Course 1

Start, 1P, 2P, gate (3aP - 3bS), 2P, 3aP, 5P, Finish

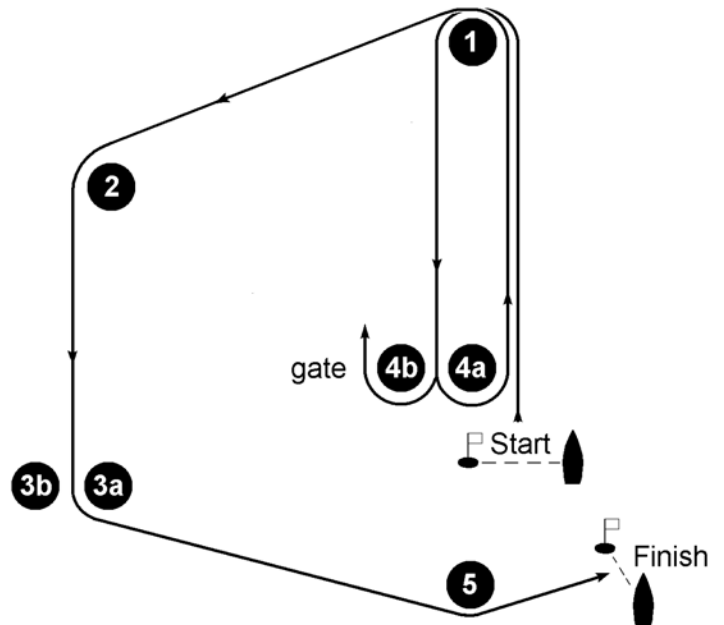
Sail this course when Pennant 1 is displayed at the warning signal.



Course 2

Start, 1P, gate (4aP - 4bS), 1P, 2P, 3aP, 5P, Finish

Sail this course when Pennant 2 is displayed at the warning signal.

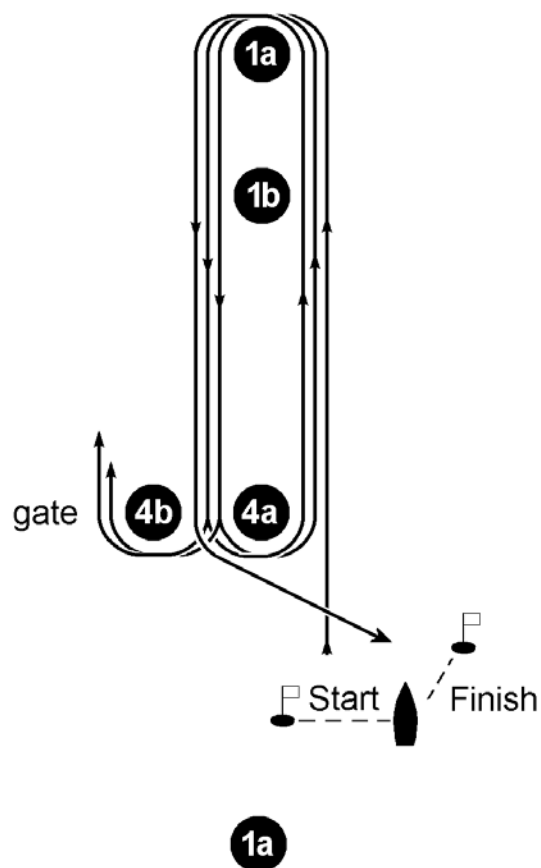


Course 3

Start, 1aP, gate (4aP-4bS), 1aP, (4aP-4bS), 1aP, 4aP, Finish

Sail this course when Pennant 3 is displayed at the warning signal.

Mark **1b**, if laid, is not a mark of this course.



Course 4

Start, 1bP, gate (4aP-4bS), 1bP, (4aP-4bS), 1bP, 4aP, Finish

Sail this course when Pennant 4 is displayed at the warning signal.

Mark **1a**, if laid, is not a mark of this course.

