



# INTERNATIONAL 420 AUSTRALIAN, AUSTRALIAN OPEN & WORLD CHAMPIONSHIPS NOTICE OF RACE



**PORT PHILLIP**  
THE BEST PLACE TO SAIL  
IN JANUARY EACH YEAR



## MORNINGTON YACHT CLUB

DECEMBER 26, 2003 - JANUARY 11, 2004



**2004**  
**INTERNATIONAL 420 AUSTRALIAN CHAMPIONSHIP**  
**INTERNATIONAL 420 OPEN AUSTRALIAN CHAMPIONSHIP**  
**INTERNATIONAL 420 CLASS WORLD CHAMPIONSHIP**  
**INTERNATIONAL 420 CLASS LADIES WORLD CHAMPIONSHIP**  
**INTERNATIONAL 420 CLASS FRANCIS MOUVET**  
**TEAM RACING CHAMPIONSHIP**

**MORNINGTON YACHT CLUB**  
**MELBOURNE-AUSTRALIA**  
**26 December 2003 – 11 January 2004**

## **NOTICE OF RACE**

### **1 PRESENTATION**

The 2004 International 420 Australian Championship, International 420 Open Australian Championship, International 420 World Championship, International 420 Ladies World Championship, and International 420 Francis Mouvet Team Racing Championship will be held on Port Phillip, Victoria, Australia from 26 December 2003 to 11 January 2004.

The races will be sailed in the waters of Port Phillip in the vicinity of Mornington Yacht Club. (See appendix A)

### **2. ORGANISING AUTHORITY**

The championship is organised by Yachting Victoria in conjunction with Mornington Yacht Club, the International 420 Class Association and the International 420 Australian Class Association.

### **3. RULES**

The event will be governed by:

- The "Rules" as defined in the ISAF Racing Rules of Sailing
- The ISAF Equipment Racing Rules of Sailing
- The Measurement Instructions

### **4. LANGUAGE DURING THE EVENTS**

The official language, during these events, is English. In case of conflict between different texts the English text shall prevail.

### **5. ADVERTISING AND BOW NUMBER**

The World Championship, Ladies Word Championship and The Francis Mouvet Team Racing Championships are classified category C, in accordance to the ISAF advertising code.

Competitors may be required to display Event sponsor's name(s)/logo(s) and bow numbers. If required the Organising Authority will supply those items and they shall be affixed and/or worn as prescribed in the Sailing Instructions.

The Organising Authority reserves the right to refuse advertising by a boat or competitors when it is in conflict with the laws of the Victorian and/or Australian governments.

## **6. EVENTS FORMAT**

### **6.1. WORLD CHAMPIONSHIP**

The World Championship shall be comprised of:

- Qualifying series to share the fleet in two fleets (Gold and Silver)
- Final series in two separate fleets (Gold and Silver)
- If there are less than 50 boats entered it will be competed in one fleet without a qualifying and final series

### **6.2. LADIES WORLD CHAMPIONSHIP**

The Ladies World Championship shall be competed in one separated fleet.

### **6.3. FRANCIS MOUVET TEAM RACING CHAMPIONSHIP**

The International 420 Class Francis Mouvet Team Racing Championship will be a tournament competed, during the races, by a National Team of two or three boats against another National Team of two or three boats.

## **7. EVENTS SCHEDULE**

### **Australian & Open Australian Championship**

26 December 2003	Registration and measurement	09:00h – 17:00hrs
27 December 2003	Registration and measurement	09:00h – 12:00h
27 December 2003	Practice Race	14:00h
28 December 2003	Race 1, 2, 3	12:00h
29 December 2003	Race 4, 5, 6	12:00h
30 December 2003	Race 7, 8	12:00h
31 December 2003	Race 9, 10	12:00h
31 December 2003	Presentation Function	19:00h

### **World Championship**

2 January 2004	Registration and Measurement	09:00h – 17:00h
3 January 2004	Registration and Measurement	09:00h – 17:00h
3 January 2004	Opening Function	18:30h
4 January 2004	Registration and Measurement	09:00 – 12:00h
4 January 2004	Practice Race	14:00h
5 January 2004	Qualifying series- World, Ladies World	12:00h
6 January 2004	Qualifying series- World, Ladies World	12:00h
7 January 2004	Frances Mouvet Teams Racing Championship	09:00h
8 January 2004	Qualifying/Final series- World, Ladies World	12:00h
9 January 2004	Qualifying/Final series- World, Ladies World	12:00h
10 January 2004	Qualifying/Final series- World, Ladies World	12:00h
11 January 2004	Qualifying/ Final series- World, Ladies World	12:00h
11 January 2004	Presentation Ceremony	19:00h

## **8. ELIGIBILITY**

The championships are only open to International 420 dinghies.

The ISAF competitor's eligibility code (RRS Appendix 2) shall apply. Each competitor shall be a member of his National Federation/Authority, if one exists. Each competitor shall be entered by his National 420 Class Association or by his National Federation/Authority if such an Association does not exist.

## **9. ENTRIES AND RESTRICTIONS**

### **9.1. WORLD CHAMPIONSHIP**

Entries for the World Championship will be limited in accordance to the International 420 Class Association Guidelines: 7 boats for each country and 14 boats for the hosting country in each championship.

The entitled crew of the International 420 World Championship is authorised to defend his title, in addition to the teams defined above. This shall apply only if the crew is still the same (crew and helmsman).

Only men and mixed crews are authorised to enter the World Championship

### **9.2. LADIES WORLD CHAMPIONSHIP**

Entries for the Ladies World Championship will be limited in accordance to the International 420 Class Association Guidelines: 7 boats for each country and 14 boats for the hosting country in each championship.

The entitled crew of the International 420 Ladies World Championship is authorised to defend her title, in addition to the teams defined above. This shall apply only if the crew is still the same (crew and helmsman).

Only ladies crews are authorised to enter the Ladies World Championship.

### **9.3. FRANCIS MOUVET TEAM RACING CHAMPIONSHIP**

The championship is only open to crews and boats competing in the World or Ladies World Championships.

A maximum of 12 national teams shall be selected in accordance to the International 420 Class Association Guidelines. The format of the International 420 Class Francis Mouvet Team Racing Championship shall be in accordance to the International 420 Class Association Guidelines.

### **9.4. OPEN AUSTRALIAN CHAMPIONSHIP**

The championship is open to all crews and boats, there are no entry quotas.

### **9.5 AUSTRALIAN CHAMPIONSHIP**

Only Australian crews will be eligible to score for the International 420 Australian Championship.

## **10. REGISTRATION & FEES**

### **Australian and Open Australian Championships**

Entry forms and payment shall be sent to

Sail Melbourne International Regatta

PO Box 83

Sandringham VICTORIA 3191

AUSTRALIA

Tel: +61 3 9597 0066

Fax: +61 3 9598 6384

E-mail: [info@sailmelbourne.com.au](mailto:info@sailmelbourne.com.au)

Website [www.sailmelbourne.com.au](http://www.sailmelbourne.com.au)

Entry fee in the Australian and Open Australian Championship per boat: **\$250 AUD**

Entry can also be made on the official form on the Sail Melbourne website. The fully completed entry form shall be received at the entry address no later than 28 November

2003. Entries may be accepted after 28 November but will be subject to a 50% late entry supplement.

### **World and Ladies World Championships**

Preliminary and final entry forms shall be sent to:

**Nino Shmueli**  
Newe-Yam, 30885, ISRAEL  
Telfax; +972 4 9840697 : Mobile: +972 56 282157  
E-mail: [ninos@netvision.net.il](mailto:ninos@netvision.net.il)

before **2 September 2003** for the Preliminary Entry Forms. (see appendix B)

and before **2 December 2003** for the Final Entry Forms. (see appendix C)

Entry fee in the World or Ladies World championship per boat: **250 EUROS**.

There is no entry fee for the Francis Mouvet Trophy.

Entry fees for the World Championships shall be paid in EURO by swift to:

**INTERNATIONAL 420 CLASS ASSOCIATION**  
ACCOUNT N° : 210 - 0467 - 180 - 80  
BANK : FORTIS BANQUE  
BANK BRANCH : AGENCE DU FORT JACO  
BRUSSELS  
BELGIUM

before **2 December 2003**.

**Each entry and fee not received by 2 December 2003 may not be accepted and shall be subject to a supplementary fee of 50 EURO.**

### **11. DISCLAIMER**

All the teams taking part in the event do so at their own risk and responsibility. The Organising Committee or any party involved with the organisation of the event disclaims any and every responsibility whatsoever for loss, damage, injury or inconvenience that might occur to persons and goods, both ashore and at sea as a consequence of participation in the races covered by this notice of race.

Attention is drawn to ISAF Fundamental Rule 4 which states :  
"The responsibility for a boat's decision to participate in a race or to continue racing is hers alone".

### **12. MEASUREMENT**

All boats shall be measured before racing on the days mentioned on this notice of race.

Each boat shall have a valid Measurement certificate, which must be produced at registration.

Random checks can be made at any time during the championships.

### **13. SAILING INSTRUCTIONS and MEASUREMENT INSTRUCTIONS**

The sailing instructions and measurement instructions will be available for each competitor and Team Leader at the race office, between 9.00 a.m. and 5.00 p.m. on the scheduled registration and measurement days. The sailing instructions will also be available on the Sail Melbourne website from 22 December 2003.

### **14. LADIES CREWS IDENTIFICATION**

As Ladies World and World crews will compete on the same course but with different starts and as a Ladies crew in a team shall compete each race of the Francis Mouvet Team Racing Championship, each ladies crew shall have a square 25cm red diamond mark on the top of the headsail for identification.

### **15. SAFETY REGULATIONS**

All competitors shall wear personal flotation devices which are in good condition and are in accordance with the specifications issued or approved by a national authority affiliated to the International Sailing Federation, or a standards organisation, or certification authority, recognised for the purpose by its respective government.  
Attention is drawn to Fundamental Rule 1.2.

Wet suits and dry suits are not adequate personal buoyancy.

### **16. RADIO COMMUNICATIONS**

A boat shall neither make radio transmissions while racing nor receive radio communications not available to all boats. This restriction also applies to mobile telephones.

### **16. DRUG TESTING**

Competitors are required to comply with RRS 5 and RRS Appendix 3 which bans the use of drugs.

Drugs testing may take place during the events.

### **17. COURSES**

#### **17.1 WORLD CHAMPIONSHIP AND LADIES WORLD CHAMPIONSHIP.**

The format of the course shall be a trapezium. (See appendix D)

The World Championship and the Ladies World Championship will be competed for at the same time and course but with separate starts.

#### **17.2 FRANCIS MOUVET TEAM RACING CHAMPIONSHIP**

The format of the course will be a trapezium. (See appendix E)

### **18. JURY, PROTESTS and PENALTIES FOR BREAKING RULES OF PART 2**

An International Jury shall be appointed, in accordance with RRS appendix M. Its decisions shall be final and not subject to appeal (RRS 70.4).

### **19. SCORING WORLD AND LADIES WORLD CHAMPIONSHIPS :**

The low point scoring system of appendix A shall apply (RRS Appendix A).

#### **19.1 WORLD CHAMPIONSHIP**

- ◆ **Qualifying series** : There will be 6 races with one discard. At the end of the qualifying series, results shall be converted to race scores. These race

scores shall be treated in all aspects as a race score for the final series (race 1).

- ♦ **Final series** : There will be 11 races plus the qualifying series result (total 12 scores in the results).
  - If less than 4 final series races are completed (less than 5 scores in the results), the qualifying races results (without race score n°1) will be taken in account in addition to the final series races competed, with one race discarded.
  - If 4 to 7 final series races are sailed (5 to 8 scores in the results) there will be one discard.
  - If 8 to 11 final series races are sailed (9-12 scores in the results) there will be two discards

A minimum of 2 final races completed (3 results in final series including the race1) is required to award the title of World Champion.

No more than three races can be competed each day.

## **19.2 LADIES WORLD CHAMPIOSHIP**

The number of races will be 12.

A minimum of 5 races completed is required to award the Championship.

If 5 to 8 races are sailed there will be one discard.

If 9 to 12 races are sailed there will be two discards.

No more than three races can be competed each day.

## **20. PRIZES AND TITLES**

### **Australian Championship**

Trophy for First Place Championship

Trophy for First Place Ladies Crew Championship

Championships Medallions for 1<sup>st</sup> – 10<sup>th</sup> place in the above event

Additional prizes may be awarded at the discretion of the Organising Authority.

### **Open Australian Championship**

Trophy for First Place Championship

Championship Medallions for 1<sup>st</sup> – 3<sup>rd</sup> place in the above event

Additional prizes may be awarded at the discretion of the Organising Authority.

### **World Championship**

Trophy for first three crews in the Gold, Silver and Ladies fleets ranking lists.

Medallions for first three crews in Gold Silver and Ladies fleets ranking lists.

At least the first 20% of crews in each of the ranking lists including the Ladies extracted ranking lists shall be given a souvenir of the event.

The prizes are given to each member of the a crew.

## **21. TITLES**

The title of International 420 Class World Champion will be awarded to the first team in the Gold fleet ranking list of the World Championship.

The title of International 420 Class Ladies World Champion will be awarded to the first team in the ranking list of the Ladies World Championship.

The title of International 420 Class Francis Mouvet Team Racing Champion will be awarded to the first team in the ranking list of the Team Racing Championship.

## **22. TROPHIES**

The William Sanchez Trophy shall be awarded, in Worlds and Ladies World Championships to the highest placed teams where both helm and crew are less than 17 years old at the end of the year of the championship.

The Huck Scott Memorial Cup shall be awarded to the youngest team completing the most possible races at each International 420 Class World Championship. The "youngest team" shall be defined as the team with the lowest combined ages. In the event of a tie, the team with the youngest member (skipper or crew) shall be declared the winning team.

## **23. ANTHEM**

For the prize giving ceremony, each team leader shall bring a recording of his/her National Anthem.

## **24. SUPPORT BOATS**

Team Manager, Coaches and other support personnel shall keep 100m clear of the course area during racing except when asked to assist by the Race Committee.

All support and coach boats will display an identification flag (white with black letters 600mm hoist by 600mm fly) bearing the three letter code of the competitor nation they are supporting.

## **25. INSURANCE**

All boats competing in the Championships shall have third party insurance cover of not less than AUD \$5,000,000 (recommended \$10,000,000) or equivalent thereof in any other currency for any accident.

All owners/competitors who sign the Entry Form are deemed to have made a declaration that they hold such cover.

Each competitor shall produce on registration evidence of such insurance and any competitor not holding this cover shall withdraw their entry.

## **26. RIGHTS TO USE NAME AND LIKENESS**

In participating in the Championships, a competitor automatically grants to the Organising Authority and the sponsors of the event, the right in perpetuity, to make, use and show, from time to time and at their discretion, any motion pictures, still pictures and live, taped or film television and other reproductions of him/her during the period of the competition for the said event in which the competitor participates and in all material related to the said event without compensation.

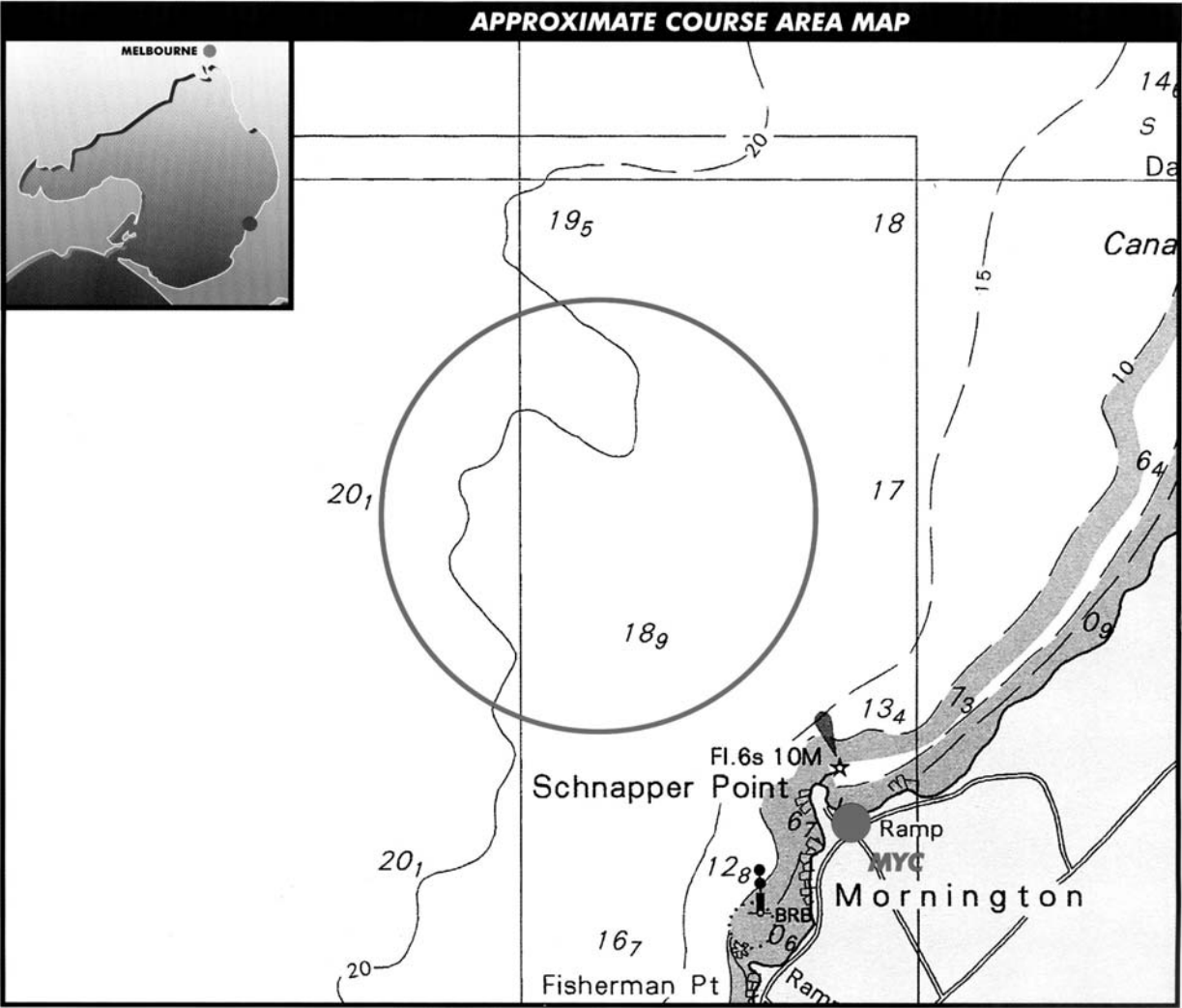


**Appendix A**

-

**RACING AREA**

*Add the map of location of the racing area*



**Appendix B**

**Mornington Yacht Club 2 – 11 January 2004**

**International 420 Class World Championship  
International 420 Class Ladies World Championship  
International 420 Class Francis Mouvet Team Racing  
Championship**

**PRELIMINARY ENTRY FORM**

**PLEASE FULFIL IN CAPITAL LETTERS**

COUNTRY	
REPRESENTED BY :	<b>Surname :</b> _____ <b>First name :</b> _____ <b>Position :</b> _____ <b>Address :</b> _____ _____ _____ <b>Telephone/Fax :</b> _____ <b>E-mail :</b> _____

WILL ENTER TO 420 CLASS MEN WORLD CHAMPIONSHIP (MAXIMUM 7 or 14 FOR HOSTING COUNTRY) :	_____ <b>BOATS</b>
WILL ENTER TO 420 CLASS LADIES WORLD CHAMPIONSHIP (MAXIMUM 7 or 14 FOR HOSTING COUNTRY) :	_____ <b>BOATS</b>
INTEND TO COMPETE THE FRANCIS MOUVET 420 CLASS TEAM CHAMPIONSHIP :	<b>YES / NO</b>

DATE :

SIGNATURE :

Post Entry forms before 2 September 2003 to :

***Nino Shmueli***

*Newe-Yam, 30885, ISRAEL*

*Telfax: + 972 4 9840697 : Mobile: + 972 56 282157*

*E-mail: [ninos@netvision.net.il](mailto:ninos@netvision.net.il)*

## Appendix C

### **Mornington Yacht Club 2 – 11 January 2004**

**International 420 Class World Championship  
International 420 Class Ladies World Championship  
International 420 Class Francis Mouvet Team Racing  
Championship**

## **FINAL ENTRY FORM**

**PLEASE FULFIL IN CAPITAL LETTERS**

COUNTRY			
SAIL NUMBER			
HELMSMAN SURNAME	FIRST NAME		
DATE OF BIRTH		SEX (M/F):	
HELMSMAN ADDRESS			
PHONE -FAX -E-MAIL			
CREW SURNAME	FIRST NAME		
DATE OF BIRTH		SEX (M/F):	
CREW ADDRESS			
PHONE -FAX -E-MAIL			

We agree to be bound by the Racing Rules of Sailing and by all other rules that govern this event.

We declare that we will participate at our own risk and that we are solely responsible for deciding whether or not to start or continue racing.

DATE : \_\_\_\_\_

-

SIGNATURE OF HELMSMAN

SIGNATURE OF CREW

- APPROVED BY : \_\_\_\_\_ ON THE BEHALF OF THE NATIONAL 420 CLASS

SIGNATURE OF REPRESENTATIVE

Post Entry forms before 2 December 2003 to :

**Nino Shmueli**

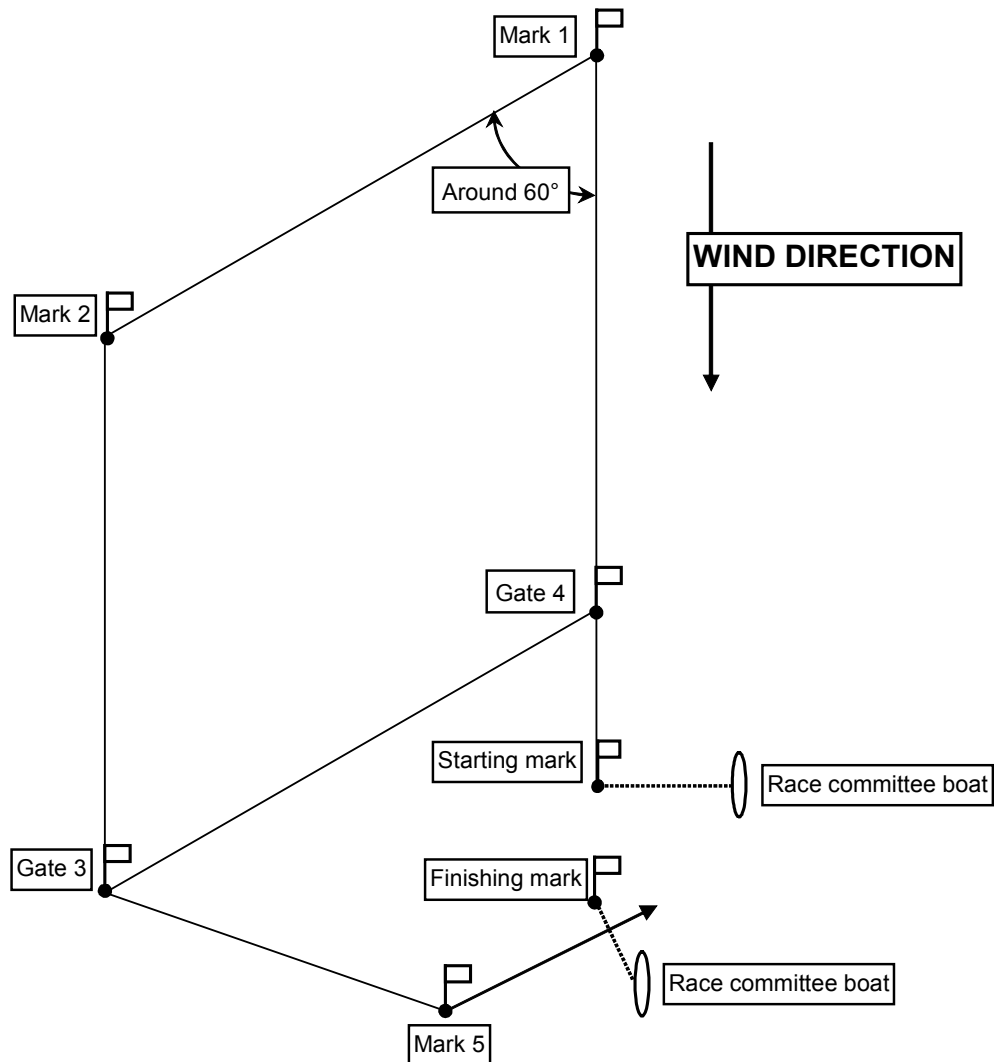
Newe-Yam, 30885, ISRAEL

Telfax: + 972 4 9840697 : Mobile: + 972 56 282157

E-mail: [ninos@netvision.net.il](mailto:ninos@netvision.net.il)

## Appendix D

### FORMAT OF THE COURSE OF MEN & LADIES WORLD



**Marks 3 and 4 shall be gates**

#### *Course for fleet A (outer loop)*

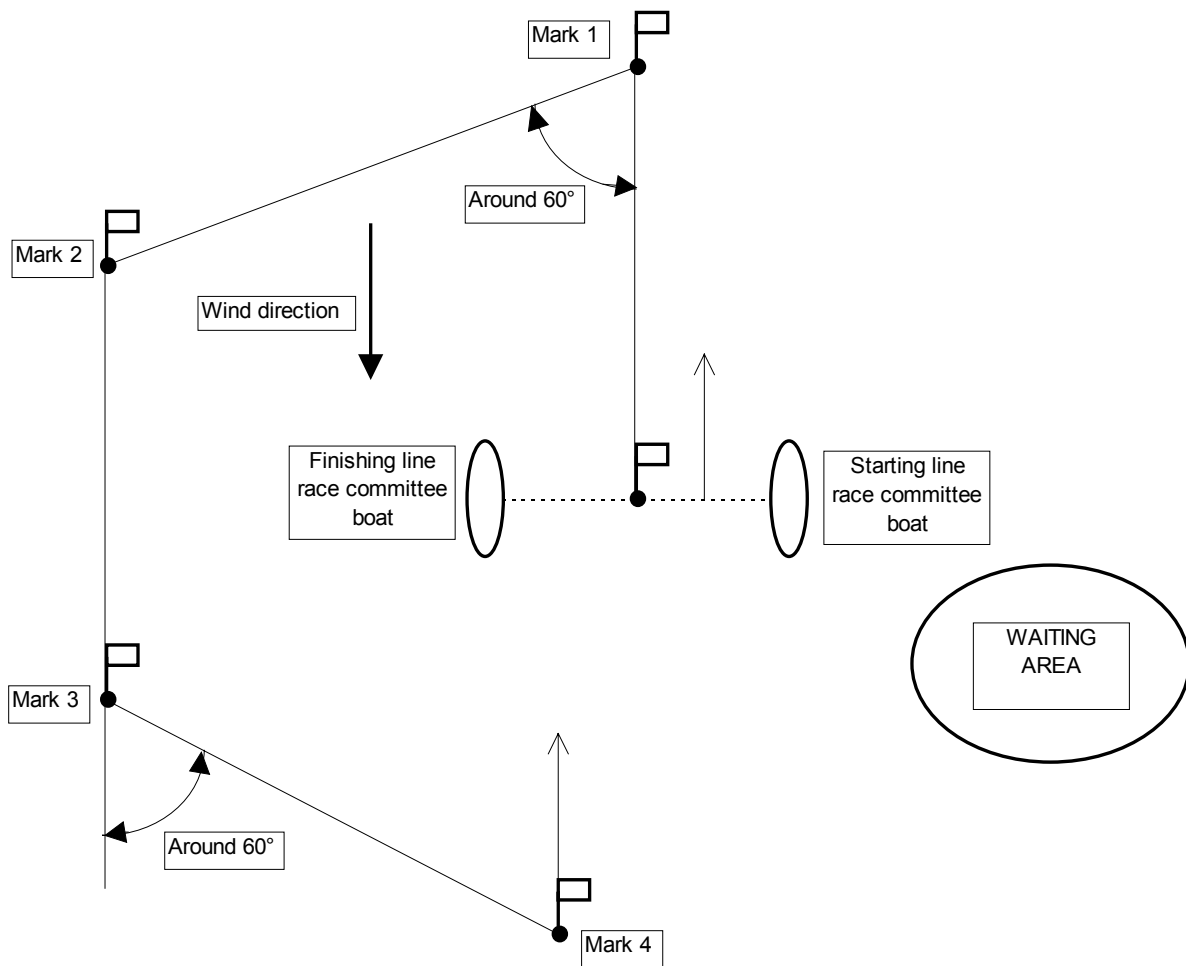
- □ Starting line → mark 1 → mark 2 → gate 3 → mark 2 → gate 3 → mark 5 → Finishing line
- □ Each mark left to port except gates

#### *Course for fleet B (inner loop)*

- □ Starting line → mark 1 → gate 4 → mark 1 → mark 2 → gate 3 → mark 5 → Finishing line
- □ Each mark left to port except gates

## Appendix E

### FORMAT OF THE COURSE FOR TEAM RACING



Course :

- □ Starting line → mark 1 → mark 2 → mark 3 → mark 4 → Finishing line
- □ Each mark left to port except finishing line mark

Revised Notice of Race - ISSUE DATE June 18, 2003

## **GENERAL INFORMATION**

(this information is not part of the Notice of Race)

### **1 Charter Boats**

Please check the website [www.sailmelbourne.com.au](http://www.sailmelbourne.com.au) or contact Sail Melbourne for further information about charter boats

### **2 Weather information : Summer weather conditions**

Information on Port Phillip weather can be found at  
[www.sailmelbourne.com.au/weather/index.php](http://www.sailmelbourne.com.au/weather/index.php)  
Average water temperature for December and January 20C  
Average air temperature for December and January 25 – 30C

### **3 Racing area :**

Racing Area: Port Phillip 2 – 3 nm from Mornington Pier.

Tide: flow generally less than 0.5 kt. Range approximately 1m; variation is minor between spring and neap tides.

Depth: In the racing area the water depth will be about 20m. Within Mornington Harbour (inside pier) depths vary from approximately 2m by the sea wall in front of Mornington Yacht Club to approximately 7m at the outer end of Mornington Pier.

Charts: AUS 143 and AUS 158 Hydrographic Service Royal Australian Navy.

### **4 Accommodation & Shipping:**

For travel, accommodation and freight assistance contact Sport Moves:

#### **Travel**

Vitina Mazzarino	Telephone: +613 9867 7152
	Fax: +613 9867 7154
	Email: <a href="mailto:vitina@movestravel.com.au">vitina@movestravel.com.au</a>

#### **Freight**

Paul Robinson	Telephone: +612 8339 1722
	Fax: +612 8339 0266
	Email: <a href="mailto:paul@eventmoves.com.au">paul@eventmoves.com.au</a>

Further accommodation information can be found on Tourism Victoria's website  
[www.visitvictoria.com.au](http://www.visitvictoria.com.au)

A list of accommodation is also available on the Sail Melbourne website.

### **5 Chandlers and repairs**

Chandler: Sport Phillip Marine, 10 Main Street, Mornington.  
Phone: 59754715 Fax: 59761700 Email: [sportphillip@ozemail.com.au](mailto:sportphillip@ozemail.com.au).  
Sail maker: Quantum Sails, Mornington. Contact David Eickmeyer.  
Phone: 59751119 Fax: 59771144 Email: [deickmeyer@quantumsails.com](mailto:deickmeyer@quantumsails.com)

## **6 General Information**

### **The Mornington Peninsula**

Melbourne's Natural Playground

The Mornington Peninsula is well known for its spectacular scenery, its enviable food and wine heritage and is teeming with wildlife, dotted with quaint seaside villages and alive with galleries, markets and antique shops. Over 192 kilometres of coastline becomes a major attraction for many during the summer, from the surf beaches of Point Leo and Gunnamatta to the tranquil waters of Rye and Sorrento.

The Peninsula's rolling hills and rich fertile soil support more than 30 wineries nestled throughout the region open for tasting, cellar door sales and scrumptious dining. Golf courses are another major attraction on the Peninsula, making the area one of the best golfing regions in Australia.

Other attractions include the Mornington Peninsula National Park, Arthur's Seat chairlift for spectacular bay views, bushwalking and horse riding trails and historic sites including the Briars Homestead, the nature reserve at Coolart and the First Settlement site at Sorrento.

#### **Host Club – Mornington Yacht Club**

Mornington is one of Victoria's most successful Yacht Clubs and is located on the picturesque Mornington Peninsula, about one hour's travel from Melbourne. The Club has hosted a number of World Championships and boasts outstanding marina and on-shore facilities. It has a protected harbour, launching ramp and beach launching facilities, marina, slipway, crane facilities and an expansive hard-stand area.

## **7 Organising Committee**

Sail Melbourne International Regatta Office  
C/- Yachting Victoria  
PO Box 83 / 77 Beach Rd  
Sandringham, Victoria 3191, AUSTRALIA  
Telephone: +61 3 9597 0066  
Facsimile: +61 5 9598 7384  
Email: [info@sailmelbourne.com.au](mailto:info@sailmelbourne.com.au)  
Website: [www.sailmelbourne.com.au](http://www.sailmelbourne.com.au)

# ENTRY FORM

## INTERNATIONAL 420 AUSTRALIAN & AUSTRALIAN OPEN CHAMPIONSHIP MORNINGTON YACHT CLUB, JANUARY 2004

Entries may also be made online at [www.sailmelbourne.com.au](http://www.sailmelbourne.com.au)

### PLEASE PRINT CLEARLY

Series Entry - International 420 Australian & Australian Open Championship

Sail Number (including National Letters if applicable)

First Name

Last Name

Date of Birth (dd/mm/yy)

Male ☐ Female ☐

Address

City

Country

Zip/Postcode

Telephone

Fax

Email

Address in Australia (if known)(Overseas Visitors only)

Telephone in Australia (if known)(Overseas Visitors only)

Home Yacht Club

AYF Memb. No. (Australian Residents only)

Crew 1. First Name

Crew 1. Last Name

Crew Date of Birth (dd/mm/yy)

Male ☐ Female ☐

Email

Home Yacht Club

AYF Memb. No. (Australian Residents only)

Coach Name

Coach Telephone

Coach Address

Best Place at World Championships

Class

Year

T-Shirt Size (one per competitor) extra small ☐ small ☐ medium ☐ large ☐ extra large ☐

Please tick if you DO want to receive the Sail Melbourne Newsletter ☐ Please tick if you DO NOT wish to receive special offers and information of interest from sponsors from time to time ☐

### ENTRY DECLARATION

'I agree to be bound by the Racing Rules of the International Sailing Federation (ISAF) and all other rules that govern the event. I acknowledge that Rule 4 (Decision to Race) places me solely responsible for deciding whether or not to continue racing. I further acknowledge and agree that in consideration of Sail Melbourne's Notice of Race Clause 11 (Entry Disclaimer) that my participation is entirely at my own risk.'

Signature

Date

### ENTRY FEE

For entries received prior to 17:00hrs on **2nd December 2003**, fees are as follows:

Australian Open Championship **AUD \$250**

Entries received after 17:00hrs on **2nd December 2003** are subject to a 50% late entry supplement.

### PAYMENT

Return to: Sail Melbourne International Regatta,  
PO Box 83, Sandringham Victoria 3191, Australia. Fax: +61 3 9598 7384  
Email: [info@sailmelbourne.com.au](mailto:info@sailmelbourne.com.au) Website: [www.sailmelbourne.com.au](http://www.sailmelbourne.com.au)

Please find enclosed ☐ cash \$AUD

☐ a cheque (payable to the Victorian Yachting Council) for \$AUD   
or debit my

☐ MasterCard ☐ Visa Card ☐ Bankcard for the amount of \$AUD

Card Number

Expiry Date

Name on card

Signature

### PARENTS TO SIGN FOR ALL ENTRANTS UNDER THE AGE OF 18 YEARS

I,

of (address)

being the Parent, Legal Guardian or Custodian of (skippers name)

consent to him/her participating in Sail Melbourne and indemnify the organisers and officers of Sail Melbourne and the respective host sailing clubs.

Signed: (Parent, Legal Guardian or Custodian)

I,

of (address)

being the Parent, Legal Guardian or Custodian of (crew name)

consent to him/her participating in Sail Melbourne and indemnify the organisers and officers of Sail Melbourne and the respective host sailing clubs.

Signed: (Parent, Legal Guardian or Custodian)