

2004
INTERNATIONAL 420 CLASS WORLD CHAMPIONSHIP
INTERNATIONAL 420 CLASS LADIES WORLD CHAMPIONSHIP

2nd January 2004 - 11th January 2004

ORGANISING AUTHORITY

Yachting Victoria in conjunction with Mornington Yacht Club, the International 420 Class Association and the Australian International 420 Class Association.

HOSTED BY
MORNINGTON YACHT CLUB

SAILING INSTRUCTIONS

1. RULES

The regatta will be governed by the current ISAF Racing Rules of Sailing (RRS) 2001/2004, the ISAF Equipment Racing Rules of Sailing, the Measurement Instructions, the Notice of Race, (except as any of these are changed by these sailing instructions,) and by these sailing instructions.

The prescriptions and special regulations of Yachting Australia will not apply except the prescription relating to RRS 68 - Damages.

- a) Any claim for damages arising from an incident while a boat is bound by the Racing Rules of Sailing shall be subject to the jurisdiction of the courts and not considered by a protest committee.
- b) A boat that takes a penalty or retires does not thereby admit liability for damages or that she has broken a rule.

This alters RRS 68.

The regatta is designated as a category **C** event.

If there is any conflict between languages the English text will prevail.

2. IDENTIFICATION

- 2.1 Boats may be required to display on each side of the hull:
 - a) A bow number as per the diagram in the Measurement Instructions and on display at registration, and
 - b) Advertising of the event sponsor as per the diagram in the Measurement Instructions and on display at registration.
- 2.2 On the second and subsequent days' racing, the three boats having the best series score at the beginning of the day shall display stickers as follows: First place yellow, second place blue and third place red.
The organizing authority will supply the stickers and instructions for their use.
- 2.3 While racing, each boat shall display a coloured ribbon corresponding to the fleet to which she has been assigned. The ribbon shall be fixed to the top of her mast. Ribbons shall be available from the **Race Office**.

3. CAMERAS AND ELECTRONIC EQUIPMENT

Boats may be required to carry cameras, sound equipment and/or positioning equipment as specified by the organising authority.

4. NOTICES TO COMPETITORS

Notices to competitors will be posted on the official notice board located on the ground floor of the Mornington Yacht Club.

5. CHANGES IN SAILING INSTRUCTIONS

Any change to the sailing instructions will be posted not less than 2 hours prior to the warning signal of any race on the day it will take effect, except any change in the schedule of races will be posted by the end of protest time or 1900hrs, whichever is the latter, on the day before it will take effect. Reassignment of fleets to racing areas will be posted before flag **D** is displayed.

6. SIGNALS MADE ASHORE

- 6.1 Signals made ashore will be displayed from the flagpole on the Mornington Yacht Club tower. When a signal is displayed over a fleet flag it applies to that fleet only.
- 6.2 Flag **AP** with two sound signals (one sound signal when lowered) means 'The race is postponed. The warning signal will be made not less than 45 minutes after **AP** is lowered.'
- 6.3 Flag **D** with a sound signal means, 'the warning signal will be made not less than 45 minutes after flag **D** is displayed'. Boats are requested not to leave the harbour until this signal is made.

7. QUALIFYING SERIES AND FINAL SERIES

- 7.1 The World Championship will consist of a qualifying series and a final series as described in Attachment **C**.
- 7.2 The Ladies World Championship will consist of a final series only.

8. SCHEDULE OF RACES

- 8.1 Races are scheduled as follows:

Event	Day and Date	Time/Warning Signal
Registration and Measurement	Friday 2 nd January 2004 Saturday 3 rd January 2004	0900 hrs - 1700 hrs 0900 hrs - 1700 hrs
Opening Function	Saturday 3 rd January 2004	1830 hrs
Registration and Measurement	Sunday 4 th January 2004	0900 hrs – 1200 hrs
Information Session	Sunday 4 th January 2004	1000 hrs
Practice Race	Sunday 4 th January 2004	1400 hrs
Worlds qualifying series and Ladies Worlds races	Monday 5 th January 2004	1200 hrs
Worlds qualifying series and Ladies Worlds races	Tuesday 6 th January 2004	1200 hrs
Frances Mouvet Teams Racing Championship	Wednesday 7 th January 2004	0900 hrs
Worlds qualifying/final series and Ladies Worlds races	Thursday 8 th January 2004	1200 hrs
Worlds qualifying/final series and Ladies Worlds races	Friday 9 th January 2004	1200 hrs
Worlds qualifying/final series and Ladies Worlds races	Saturday 10 th January 2004	1200 hrs
Worlds qualifying/final series and Ladies Worlds races	Sunday 11 th January 2004	1200 hrs
Presentation Ceremony	Sunday 11 th January 2004	1900 hrs

- 8.2 The numbers of races scheduled are as follows:
- a) World Championship - Qualifying series: **6** races.
Final series: **12** races (including race No. **1**
as defined in **19.2.b** and Attachment **C**.)
 - b) Ladies World Championship - Final series: **12** races.
- 8.3 It is intended that no more than **three** races will be sailed each day.
- 8.4 When more than one race will be held on the same day, the warning signal for each succeeding race will be made as soon as practicable. To alert boats that another race or sequence of races will begin soon, the postponement signal **AP** will be displayed for at least **4** minutes before a warning signal is displayed.
- 8.5 On the last day of the regatta no warning signal will be made after 1600 hrs.

9. CLASS FLAGS

- 9.1 World Championship coloured flags, as per Attachment **C**, will be as follows:

- a) Qualifying series: Fleet - **Yellow.**
Fleet - **Blue.**
Fleet - **Green.**
Fleet - **Red.**
- b) Final series: Gold fleet - **Yellow.**
Silver fleet - **Blue.**

- 9.2 Ladies World Championship
International 420 Class flag.

10. RACING AREA

The racing area will be as shown in Attachment **A**, attached.

11. THE COURSE

- 11.1 The diagrams in Attachment **B** show the courses, including the course signal, the order in which marks are to be passed, and the side on which each mark is to be left.
- 11.2 **No later than** the warning signal, numeral pennant **N°1** or **2** will be hoisted to indicate the course to be sailed:
Numeral pennant **N°1** Trapezoid **Outer** Loop
Numeral pennant **N°2** Trapezoid **Inner** Loop
- 11.3 No later than the warning signal, the race committee signal boat will display the approximate compass bearing from the start to Mark **1**.
- 11.4 When there is a gate, boats shall sail between the gate marks from the direction of the previous mark and round either gate mark.

12. MARKS

Marks will be as follows:

- 12.1 Marks **1**, **2** and **5** will be large **orange** inflatable buoys.
- 12.2 Marks **3S** and **3P** will be **red** inflatable buoys.

- 12.3 Marks **4S, 4P** will be **yellow** inflatable buoys.
- 12.4 New marks, as provided in **14.1** will be large **yellow** inflatable buoys.
- 12.5 The starting marks will be race committee vessels (including any attached boats or buoys).
- 12.6 The finishing marks will be a race committee vessel at the starboard end and a large **yellow** inflatable buoy at the port end.
- 12.7 A race committee boat signalling a change of course is a mark as provided in **14.3**.

13. THE START

- 13.1 Races will be started by using RRS **26** with the warning signal given 5 minutes before the starting signal.
Succeeding fleets will be started at any time after the starting signal for the preceding fleet by displaying the warning signal for the succeeding fleet.
- 13.2 The starting line will be between staffs displaying orange flags on two race committee vessels.
- 13.3 A buoy carrying an orange flag may be moored near, or streamed from, the Committee Vessel. This buoy may not be exactly on the Starting Line, but boats shall leave this buoy on the same hand as the Committee Vessel when starting. For the purpose of the application of the RRS the buoy is deemed to be part of the Committee Vessel and any boat touching the Buoy or passing between it and the Committee Vessel shall be deemed to have touched the Committee Vessel.
- 13.4 Recall signals may be repeated on the port end starting vessel and/or the lead boat. Failure to display these signals shall not be grounds for redress. This alters RRS **62.1 (a)**.
- 13.5 Boats whose Warning signal has not been made shall keep clear of the starting line and of all boats whose Warning signal has been made.
- 13.6 A boat starting later than **3** minutes after her starting signal will be scored **DNS**. This alters RRS **A4.1**.
- 13.7 If a start using a black flag is subject to a general recall the bow numbers of the boats identified as infringing RRS **30.3** may be displayed instead of the sail numbers. This alters RRS **30.3**.

14. CHANGE OF COURSE AFTER THE START

- 14.1 To change the position of the next mark, the race committee will lay a new mark (or move the finishing line) and remove the original mark as soon as practicable. The change will be signalled before the leading boat has begun the leg, although the mark may not yet be in the new position. Any mark to be rounded after rounding the new mark may be relocated without further signalling to maintain the course configuration. When in a subsequent change, a new mark is replaced it will be replaced by the original mark.
- 14.2 RRS **33** is changed so that, instead of displaying a compass bearing, the race committee will display a green board/flag if the direction is changed to starboard or a red board/flag if the direction is changed to port.
- 14.3 Except at a gate, boats shall pass between the race committee boat signalling the change of course and the nearby mark, leaving the mark to port and the race committee boat to starboard. This changes RRS **28.1**.

15. THE FINISH

- 15.1 The finishing line will be between a staff displaying an **orange** flag on a race committee vessel at the starboard end and the port end finishing mark.
- 15.2 When the course is shortened at a gate, a race committee vessel near the gate will display flag **S** and boats shall finish by sailing through the gate from the direction of the previous mark. The finishing line will be between the gate marks. This changes Race Signal **S**.
- 15.3 Code flag **L** when displayed on a race committee vessel at the finish line, means 'It is intended that another race will be held as soon as practicable'.

16. PENALTY SYSTEM

- 16.1 The immediate penalties of RRS **Appendix N** for infringing RRS **42** will apply.
- 16.2 A boat that has taken a penalty or retired under RRS **31.2** or **44.1** shall complete an acknowledgment form at the race office, within the protest time limit.

17. TIME LIMIT

- 17.1 The time limit for a race is **90** minutes.
- 17.2 The target time for a race is **60** minutes.
- 17.3 The time limit to Mark **1** will be **30** minutes. If no boat has passed Mark **1** within the Mark **1** time limit the race will be abandoned.
- 17.4 Boats failing to finish within **20** minutes after the first boat of their fleet, sails the course and finishes, will be scored 'Did Not Finish' (**DNF**). This alters RRS **35** and **A4.1**.

18. PROTESTS AND REQUESTS FOR REDRESS

- 18.1 A boat intending to protest will inform the race committee immediately after finishing that race of her intention to lodge a protest and be sure that the race committee acknowledges the intention. If the protesting boat did not finish, she will inform any race committee boat if possible or the race office as soon as she arrives on shore.
- 18.2 Protest and Request for Redress forms will be available at the race office and protests or requests for redress shall be delivered there within **90** minutes after the time of the last boat's finish in the last race of the day.
- 18.3 Notices of protests by the race committee or international jury will be posted on the official notice board to inform boats under RRS **61.1(b)**.
- 18.4 A list of boats that, under **16.1**, have acknowledged breaking RRS **42** or have been penalised by the international jury will be posted before the protest time limit.
- 18.5 Protest and Request for Redress notices will be posted within **30** minutes of the protest time limit to inform competitors where and when there is a hearing in which they are parties to a protest or named as witnesses. This will be the only notification in accordance with RRS **63**.
- 18.6 Protests will be heard in approximately the order of receipt as soon as possible.
- 18.7 RRS **66** is changed by adding the following: 'On the last day of racing, a party to a hearing may ask for a reopening only if the request is received within the protest time limit if the party requesting the reopening was informed of the decision on a previous day or within one hour of receiving the protest decision on the last day. If no race is completed on the last day, requests to re-open hearings shall be lodged no later than **1** hour after the abandonment signal is made.'
- 18.8 Infringements of SI's **2** (Identification), **3** (Cameras and Electronic Equipment), **13.5** (Avoiding the Start area), **16.1** (Appendix N penalties), **20** (Safety), **21.2** (Replacement of Equipment), **24** (Charter Boats), **25** (Support Boats), **26** (Rubbish Disposal), **27** (Berthing)

and **28** (Electronic Communication) are only protestable by the Race Committee or Jury. This alters RRS **60.1(a)**.

18.9 Decisions of the international jury will be final as provided in RRS **70.4**.

19. SCORING

19.1 The Low Point scoring system of Appendix **A** will apply.

19.2 World Championship

19.2.1 Qualifying series

- a) There will be **6** qualifying series races with one discard.
- b) The qualifying series results shall be converted to race scores. These race scores shall be treated in all aspects as a race score for the final series (race No. **1**).
- c) The result of each round in the qualifying series will only be valid when all races in the round have been completed.

19.2.2 Final series

- a) **2** final series races, (**3** results in the final series including the race **1**), are required to be completed to constitute a final series.
- b) When less than **4** final series races (less than **5** scores in the results) are completed, the race score of each qualifying series race and each final series race, excluding each boat's worst score of the combined scores will be used to determine the final scores for the event.
- c) When from **5** to **8** final series races have been completed, a boat's series score will be the total of her race scores (including race **1**) excluding her worst score.
- d) When **9** or more final series races have been completed, a boat's series score will be the total of her race scores (including race **1**) excluding her two worst scores.

See also Attachment **C**.

19.3 Ladies World Championship

- a) **5** races are required to be completed to constitute a series.
- b) When from **5** to **8** races have been completed, a boat's series score will be the total of her race scores excluding her worst score.
- c) When **9** or more races have been completed, a boat's series score will be the total of her race scores excluding her two worst scores.

19.4 To request a check of a possible error in posted race or series results, a boat shall complete a scoring enquiry form available at the race office.

19.5 The scoring abbreviation for a discretionary penalty imposed under instruction **18.4** will be **DPI**.

19.6 When boats sail in a series in groups as provided in Attachment **C**, for the purposes of RRS **A.4.2**, the points to be scored shall be based on the number of boats sailing in each race. A boat that did not start, did not finish, retired after finishing or was disqualified will be scored points for the finishing place one more than the number of boats assigned to the two groups sailing in the race. This alters RRS **A.4.2**.

20. SAFETY

20.1 Personal Buoyancy

Approved personal buoyancy shall be worn by all competitors at all times while afloat. Wet or dry suits do not constitute approved personal buoyancy. Flag **Y** will not be displayed. This alters RRS **40** and race signal **Y**.

20.2 Retirement Afloat

Any boat that retires from a race shall, when possible, notify an official vessel before leaving the racing area.

20.3 Signing On and Off

Before leaving the beach each boat shall sign-on on the sheets provided in the clubhouse.

When boats reach the race area, they are to pass across the stern of the committee vessel at the starboard end of the starting line such that their sail number is visible, hail their number and be acknowledged.

After coming ashore, all boats shall sign off on the sheets provided in the clubhouse. Sign off is to be done within **60** minutes of the last boat finishing in that race.

Failure to comply with this requirement may result in being scored **DNC** after protest. This alters RRS **63.1**.

20.4 Rescue Boats

Competitors in difficulty are requested to respect the instructions of the rescue boat crews.

21. CHANGE OF CREW AND EQUIPMENT

21.1 Change of Crew

There shall be no change of crew without prior written permission from the International Jury. A request for permission for a change of crew shall be lodged at the Race Office no later than one hour before the advertised warning signal of the first race of the day the boat is scheduled to compete in, or, if the race has been postponed ashore, the lowering of flag 'AP' as prescribed in instruction **6.2**.

If a written request is not submitted as required the boat concerned may be scored **DNC** for the race or races concerned.

21.2 Change to Equipment

Any request to seek permission to change equipment shall be made in writing to the Race Committee before the end of protest time on the day the equipment has been damaged. Only in exceptional circumstances will requests outside this time be accepted. Final approval to use replacement equipment must be obtained at least two hours before the warning signal of the first race of the day the boat is scheduled to compete, and in which such equipment is to be used.

When two or more races are scheduled on one day a verbal request for change may be made after the start of the first race of the day. If granted, the request shall also be submitted in writing before the end of protest time that day and all such equipment shall be measured and approved at least two hours before racing on the following day. If a request is not submitted, or if when measured the replacement equipment does not comply with the class rules, the boat shall be scored DNC for the race or races affected.

Request for change of equipment forms are available from the Race Office.

22. MEASUREMENT CHECKS

The race committee reserves the right to measure any boat at any time during the series. On the water, a boat can be instructed by the race committee to proceed immediately to a designated area for inspection.

23. OFFICIAL VESSELS

23.1 Identification

Official vessels will be identified by a Sail Melbourne sticker on either the sides of the vessel or side windscreens as appropriate.

23.2 Mark Boats

Mark boats may be stationed beyond each mark. At the finish, the mark boat may be stationed beyond the finishing line. When on station only, each mark boat will display an orange shape. Failure of a mark boat to be on station or to display her signal will not be grounds for redress. This alters RRS **62.1(a)**.

23.3 Lead Boat

A lead boat displaying code flag 'L' may lead the fleet around the first mark and any subsequently changed leg of the course.

24. CHARTER BOATS

According to the Appendix **G** RRS **G3**, a boat chartered may carry a sail number in contravention of the International **420** Class Rules. The boat shall carry on her stern an adhesive waterproof label with her Country Code, Sail Number, and contact number of the race committee.

25. SUPPORT BOATS

Unless directed by the race committee, team leaders, coaches and other support personnel whilst afloat shall remain more than 100 metres outside areas where boats are racing nor go closer than 100 metres to any competing boat between the Preparatory signal for the first fleet to start and when the last boat finishes, unless the race committee signals a postponement or abandonment. The penalty for failing to comply with this requirement may after protest, be the disqualification of all boats associated with the infringing support personnel.

All coach boats shall display, for their identification a minimum of **30 x 20** cm white flag with the national letters of their respective country while afloat.

26. RUBBISH DISPOSAL

Boats shall not put rubbish in the water. Rubbish may be placed aboard support and official boats.

27. BERTHING

Boats shall be kept in their assigned places in the boat park.

28. ELECTRONIC COMMUNICATION

A boat, whilst racing, shall neither make nor receive electronic communications. This includes mobile phones.

29. PRIZES

Prizes will be in accordance with those defined in the Notice of Race. Additional trophies may be awarded at the discretion of the Organising Authority.

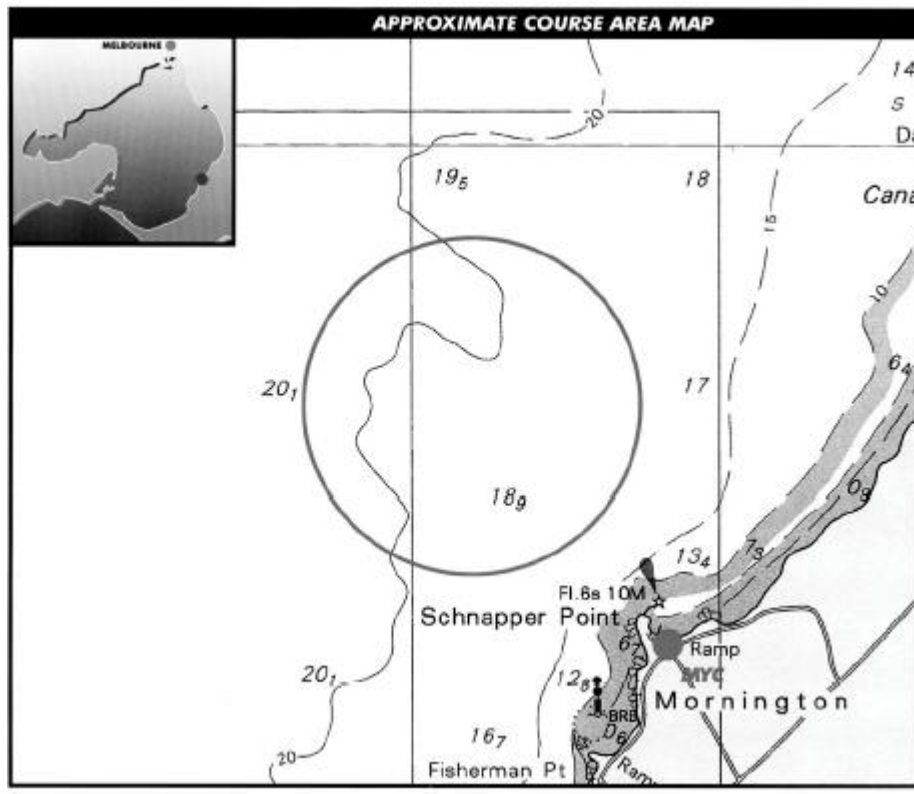
30. LIABILITY

Competitors sail at their own risk. Injuries to competitors and damage to boats can and often does occur. The Organising Authority and all parties involved in the organisation of the Regatta accept no responsibility or liability for any loss, damage or injury which may occur to any person or property, whether ashore or afloat, as a consequence of participation in the Regatta or otherwise. The Organising Authority and all parties involved in the Regatta disclaim any and all such liability. The Notice of Race and these Sailing Instructions in no way limit or reduce the complete and unlimited responsibilities of a competitor for the management and care of a boat they may be sailing in the Regatta.

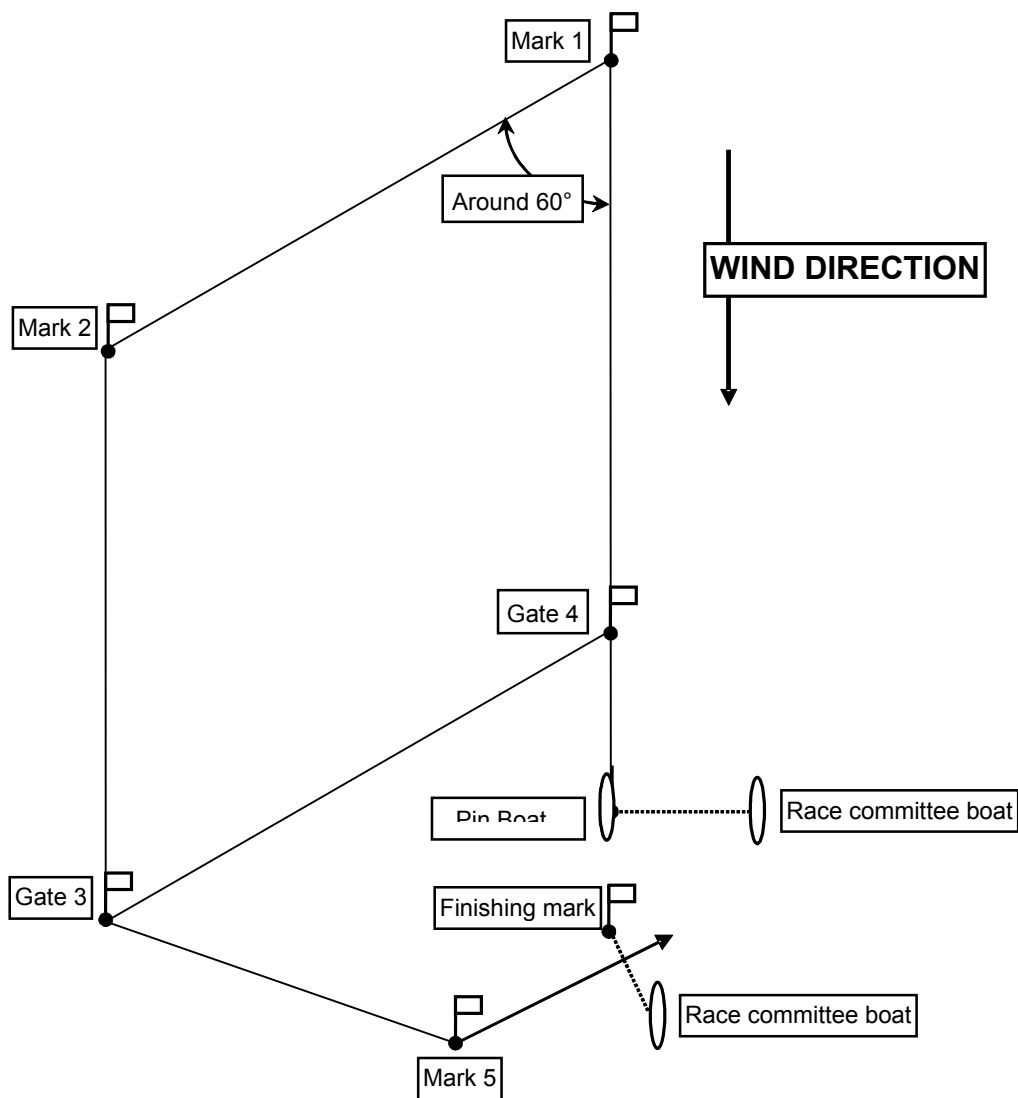
UPDATES:

16 December 2003 – amended with update to section 16 – Penalty system.

ATTACHMENT A - RACING AREA



ATTACHMENT B – DIAGRAM OF THE COURSE



Mark 3 and 4 shall be gates

Outer loop course

Starting line → mark 1 → mark 2 → gate 3 → mark 2 → gate 3 → mark 5 → Finishing line

Each mark left to port except gates

Inner loop course

Starting line → mark 1 → gate 4 → mark 1 → mark 2 → gate 3 → mark 5 → Finishing line

Each mark left to port except gates

ATTACHMENT C - QUALIFYING SERIES AND FINAL SERIES

QUALIFYING SERIES

Boats will be assigned to one of four approximately equal size groups, **Yellow**, **Blue**, **Green**, and **Red** as follows:

Competing countries will be listed in the alphabetical order of their **ISAF** national letters. Each country's boats will be sorted by draw, to produce a full list of boats. For example:

ARG 1 ARG 2

AUS 1 AUS 2 AUS 3 AUS 4 AUS 5 AUS 6 AUS 7

AUT 1 AUT 2 AUT 3 AUT 4

BEL 1 BEL 2 BEL 3 etc.

The first boat in the list is assigned to **Yellow** fleet, the second to **Blue** fleet, the third to **Green** fleet, the fourth to **Red** fleet, the fifth to **Yellow** fleet, and so on. The above example would split as follows:

Yellow	Blue	Green	Red
ARG 1	ARG 2	AUS 1	AUS 2
AUS 3	AUS 4	AUS 5	AUS 6
AUS 7	AUT 1	AUT 2	AUT 3
AUT 4	BEL 1	BEL 2	BEL 3

A list of boats in each group will be available at registration.

There will be 6 qualifying races. Groups will race with each other in rotation as follows:

Race	First Flight	Second Flight
1	Yellow & Blue	Green & Red
2	Yellow & Green	Blue & Red
3	Yellow & Red	Blue & Green
4	Green & Red	Yellow & Blue
5	Blue & Red	Yellow & Green
6	Blue & Green	Yellow & Red

The result of each round in the qualifying series will only be valid once all races in the round have been completed.

FINAL SERIES

After the qualifying series, boats will be assigned to one of two approximately equal sized fleets, **Gold** and **Silver**. Boats with the best qualifying-series scores will race all final series races in the **Gold** fleet, the remainder will race in the **Silver** fleet. If, there is an odd number of boats then the additional boat will sail in the **Gold** Fleet. If ties are not broken between boats at the boundary between **Gold** and **Silver** and one boat should have sailed in the **Gold** Fleet, then those tied boats will all sail in the **Gold** fleet. A list of boats in each fleet will be posted on the official notice board at least 2 hours before the scheduled start time for the first race of the final series.

Any recalculation of qualifying series scores after boats have been assigned to final series fleets will not affect the assignments except that a redress decision may promote a boat to the **Gold** fleet.