

INTERNATIONAL 420 CLASS OPEN MEETING

Hayling Island Sailing Club

24 & 25 April 2004

SAILING INSTRUCTIONS

1 RULES

- 1.1 The Racing will be governed by the 'rules' as defined in the Racing Rules of Sailing.

2 NOTICES TO COMPETITORS

- 2.1 Notices to competitors will be posted on the official notice board, located on the north side of the clubhouse, under the balcony.

3 CHANGES TO SAILING INSTRUCTIONS

- 3.1 Any changes to the sailing instructions will be posted on the official notice board at least two hours before the advertised warning signal of the race or races concerned, and indicated by displaying flag L ashore. However, any change to the schedule of races will be posted by 19:00 hours on the day before it will take effect.

4 SIGNALS MADE ASHORE

- 4.1 Signals made ashore will be displayed from the HISC signals mast.
- 4.2 When flag AP is displayed ashore Race Signal AP is changed as follows:
- (a) Except when racing is held in Chichester Harbour '1 minute' is replaced with 'not less than 60 minutes'.
 - (b) When racing is held in Chichester Harbour '1 minute' is replaced with 'not less than 30 minutes'.
- 4.3 No boat shall leave the shore until flag R is displayed with two sound signals. Competitors may sign on (see SI 17.2) before flag R is displayed. The warning signal will be made not less than 60 minutes after this signal, or not before the scheduled time, whichever is later.
- 4.4 Flag H displayed with flag R means racing will be held in Chichester Harbour. The warning signal will be made not less than 30 minutes after this signal, or not before the scheduled time, whichever is later.

5 SCHEDULE OF RACES

- 5.1 A total of 6 races is scheduled as follows:

Date	Time of warning signal of first race
Saturday 24 April	12:25
Sunday 25 April	10:55

- 5.2 There will be a maximum of 4 races per day.
- 5.3 Subsequent races on each day will start as soon as possible after the finish of the previous race.

6 CLASS FLAG

- 6.1 The class flag will be the International 420 class flag.

7 RACING AREA

- 7.1 The racing areas will include Hayling Bay and Chichester Harbour.
- 7.2 The chart in Attachment A shows the location of the intended racing area in Hayling Bay.

8 THE COURSES

- 8.1 The diagrams in Attachment B show the courses, including the course signals, the order in which marks are to be passed, and the side on which each mark is to be left.
- 8.2 No later than the warning signal, the approximate magnetic bearing from the start to mark 1 may be displayed on the race committee vessel.

9 MARKS

- 9.1 Marks 1, 2, 3, and 4 will be inflatable buoys.
- 9.2 The starboard-end starting mark will be a race committee vessel (including any attached boats or buoys).
- 9.3 The port-end starting mark will be one of the following:
 - (a) An orange inflatable buoy.
 - (b) A dan-buoy with an orange flag.
- 9.4 Finishing marks will be a race committee vessel and a dan-buoy with a blue flag.

10 THE START

- 10.1 Races will be started in accordance with RRS 26.
- 10.2 The starting line will be between a staff displaying an orange flag on the starboard-end starting mark, and the port-end starting mark.
- 10.3 If flag F is displayed on the race committee vessel with one sound signal between races, it will be removed after four minutes with one sound signal, followed one minute later by the warning signal for the next race.
- 10.4 A boat starting later than 3 minutes after her starting signal will be scored Did Not Start. This changes RRS A4.1.

11 CHANGE OF COURSE AFTER THE START

- 11.1 A change of course after the start will be signalled before the leading boat has begun the leg, although the new mark may not then be in position. Any mark to be rounded after rounding the new mark may be relocated to maintain the original course configuration without a further course change signal. This changes RRS 33.

12 THE FINISH

- 12.1 The finishing line will be between a staff displaying an orange flag on the race committee vessel and the finish line outer distance mark.
- 12.2 After the first boat has finished, the race committee may finish other boats at any mark of the course.
 - (a) When a committee boat displays flag W with two sound signals, boats which have not yet rounded the nearby mark shall finish between this mark and the staff on the boat displaying W.
 - (b) When a boat finishes in accordance with this SI, she shall be awarded a finishing place after all boats that have completed more legs of the course and then finished.
 - (c) After flag W has been displayed any boat that fails to complete the leg she is sailing within the time limit for a valid race shall be awarded the place she is judged by the race committee to be occupying at the end of the time limit for that race.

13 PENALTY SYSTEM

- 13.1 A boat that has taken a penalty or retired under RRS 31.2 or 44.1 shall complete an acknowledgement form at the race office, within the protest time limit.

14 TIME LIMIT

- 14.1 The time limit for a boat shall be 20 minutes after the first boat finishes after a valid start, except that if no boat finishes within 90 minutes of a valid start, the race will be abandoned.
- 14.2 If no boat has rounded the first mark within 30 minutes after a valid start, the race will be abandoned.

15 PROTESTS AND REQUESTS FOR REDRESS

- 15.1 Protests forms are available at the race office. Protests shall be delivered there within the protest time limit.
- 15.2 The protest time limit is 90 minutes after the last boat has finished the last race of the day. This changes RRS 61.3 and 62.2.
- 15.3 Notices will be posted on the official notice board within 30 minutes of the protest time limit to inform competitors of hearings in which they are parties or named as witnesses. This is the notice under RRS 63.2.
- 15.4 Notices of protests by the race committee will be posted on the official notice board to inform boats under RRS 61.1(b).
- 15.5 On the last day of scheduled racing, a party to a hearing may ask for a re-opening no later than one hour after being informed of the decision. This changes RRS 66.

- 15.6 Protests under SIs 17, 20, and 21 may be brought only by the race committee and not by a competitor. This changes RRS 60.1.

16 SCORING

- 16.1 The low points scoring system of RRS Appendix A will apply.
- 16.2 6 races will be scheduled, of which 2 shall be completed to constitute a series.
- 16.3 When fewer than 4 races have been completed, a boat's series score will be the total of her race scores.
- 16.4 When 4 or more races have been completed, a boat's series score will be the total of her race scores excluding her worst score.

17 SAFETY REGULATIONS

- 17.1 Life-jackets or other adequate personal buoyancy shall be worn by all competitors at all times while afloat. Wet suits and dry suits are not adequate personal buoyancy. Flag Y will not be displayed. This changes RRS 40 and Race Signal Y.
- 17.2 **Signing on and off:**
- (a) Each competitor is required to **Sign On**, using the form on the official notice board, before going afloat.
 - (b) Each competitor must also **Sign Off**, using the same form, within 30 minutes of coming ashore after finishing or retiring from the last race that they intend to compete in on that day.
 - (c) Boats whose crew fail to comply with this SI may accept an alternative penalty for a first infringement by making a donation of £5 to the Royal National Lifeboat Institution. Otherwise the penalty will be disqualification from all races on the day concerned. This changes RRS 63.1 and A4.1.
- 17.3 Prohibited Area: The West Pole sands are a prohibited area (see chart in Attachment A). The sands, which extend from Eastoke Point at the western side of the harbour entrance out to the Chichester Bar Beacon, are shallow and a difficult area for safety boats to operate in. All boats shall pass the Chichester Bar Beacon to starboard on the way out to the racing area, and, on returning, shall leave the Beacon to port.
- 17.4 Competitors shall obey instructions from official safety boats.

18 REPLACEMENT OF CREW OR EQUIPMENT

- 18.1 Substitution of competitors will not be allowed without prior written approval of the race committee.
- 18.2 Substitution of damaged or lost equipment will not be allowed unless approved by the race committee. Requests for substitution shall be made at the first reasonable opportunity.
- 18.3 Sail numbers other than those required by RRS G1.1(c) will only be allowed in exceptional circumstances and with the written permission of the race committee. Under no circumstances will a boat be permitted to use the sail number of another boat that is racing. This changes RRS 77.

19 EQUIPMENT AND MEASUREMENT CHECKS

- 19.1 A boat or equipment may be inspected at any time for compliance with the class rules and sailing instructions.

20 SUPPORT BOATS

- 20.1 Team leaders, coaches and other support personnel shall remain more than 100 metres from the course area from the time of the preparatory signal until all boats have finished or the race committee signals a postponement, general recall or abandonment.
- 20.2 The penalty for failing to comply with SI 20.1 may be the disqualification of boats associated with the infringing personnel in that race, or such other penalty that the protest committee may decide.

21 TRASH DISPOSAL

- 21.1 Boats shall not discharge trash into the water. Trash may be deposited on support and official boats.

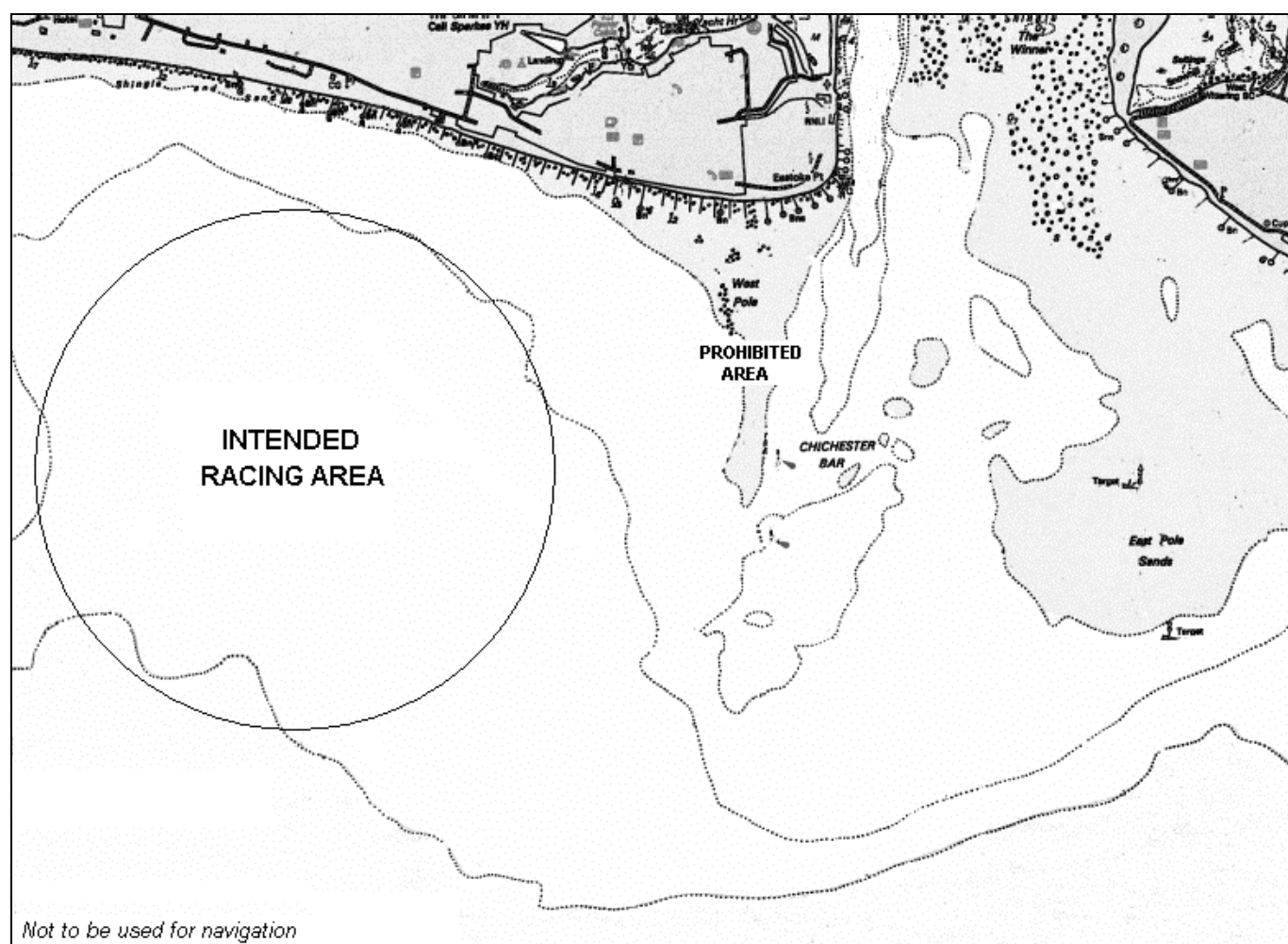
22 RADIO COMMUNICATION

- 22.1 A boat shall neither make radio transmissions while racing nor receive radio communications not available to all boats. This restriction includes cellular telephones.

23 PRIZES

- 23.1 Prizes are detailed in the Notice of Race.

ATTACHMENT A – RACING AREA



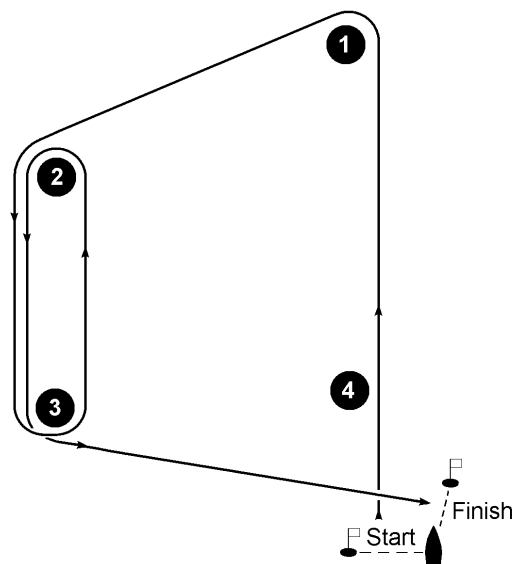
ATTACHMENT B - COURSES

COURSE 1

Start, 1P, 2P, 3P, 2P, 3P, Finish

Sail this course when Pennant 1 is displayed at the warning signal.

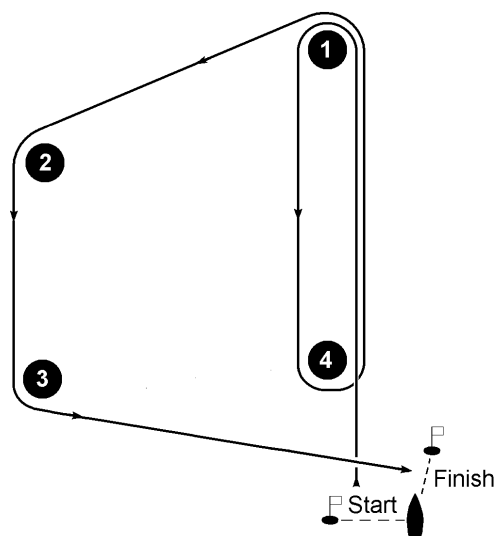
Marks 4 may be laid, but is not a mark of this course.



COURSE 2

Start, 1P, 4P, 1P, 2P, 3P, Finish

Sail this course when Pennant 2 is displayed at the warning signal..



COURSE 3

Start, 1P, 2P, 1P, 2P, 1P, 2P, Finish

Sail this course when Pennant 3 is displayed at the warning signal.

