

**2004**  
**BRITISH INTERNATIONAL 420 CLASS OPEN & NATIONAL CHAMPIONSHIPS**

*Restronguet Sailing Club*

*14 to 20 August 2003*

**SAILING INSTRUCTIONS**

**1 RULES**

- 1.1 The Racing will be governed by the 'rules' as defined in the Racing Rules of Sailing.

**2 IDENTIFICATION**

- 2.1 All boats shall display bow numbers while racing. These will be issued at registration and shall be fixed to the hull on both sides of the bow, as illustrated in Attachment A. If a bow number becomes detached or damaged so that, in the opinion of the race committee, it is unclear or unreadable, it must be replaced before the first race of the following day. Replacement numbers are available at 50p.
- 2.2 Boats sailed by all female crews shall display red diamond shapes while racing. These will be issued at registration and shall be fixed to both sides of the mainsail, above the top batten.

**3 NOTICES TO COMPETITORS**

- 3.1 Notices to competitors will be posted on the official notice board, located at the clubhouse.

**4 CHANGES TO SAILING INSTRUCTIONS**

- 4.1 Any changes to the sailing instructions will be posted on the official notice board at least two hours before the advertised warning signal of the race or races concerned, and indicated by displaying flag L ashore. However, any change to the schedule of races will be posted by 20:00 hours on the day before it will take effect.

**5 SIGNALS MADE ASHORE**

- 5.1 Signals made ashore will be displayed from the mast at the top of the ramp to the dinghy park.
- 5.2 When Code Flag AP is displayed ashore, '1 minute' is replaced with 'not less than 60 minutes' in Race Signal AP.
- 5.3 No boat shall leave the shore until Flag R over the class flag (SI 7.1) is displayed with two sound signals. Competitors may tally out (see 18.3 below) before flag R is displayed. The warning signal will be made not less than 60 minutes after this signal, or not before the scheduled time, whichever is later.

**6 SCHEDULE OF RACES**

- 6.1 Racing is scheduled as follows:

Date	Event	Time of warning signal of first race
Mon 16 August	Practice start	10:55
	3 Races	11:10
Tue 17 August	3 Races	10:55
Wed 18 August	3 Races	10:55
Thur 19 August	2 Races	12:55
Fri 20 August	3 Races	10:55

- 6.2 Subsequent races on each day will start as soon as possible after the finish of the previous race.

**7 CLASS FLAG**

- 7.1 The class flag will be the International 420 Class Flag.

## **8 RACING AREA**

- 8.1 The chart in Attachment B shows the location of alternative racing areas 1, 2, and 3. Area 1 will be used under most circumstances, but 2 or 3 may be used, at the discretion of the race committee.

## **9 THE COURSES**

- 9.1 The diagrams in Attachment C show the courses, including the course signals, the order in which marks and gates are to be passed, and the side on which each mark and gate mark is to be left.
- 9.2 No later than the warning signal, the approximate magnetic bearing from the start to mark 1 will be displayed on the race committee signal vessel.
- 9.3 When there is a gate, boats shall sail between the gate marks from the direction of the previous mark and round either gate mark.

## **10 MARKS**

- 10.1 Marks 1, 2, 3a, 3b, 4a, and 4b will be black inflatable buoys.
- 10.2 Starting marks will be race committee vessels (including any attached boats or buoys).
- 10.3 Finishing marks will be a race committee vessel and a dan-buoy with a white flag.

## **11 THE START**

- 11.1 Races will be started in accordance with RRS 26.
- 11.2 The starting line will be between staffs displaying orange flags on the starting marks.
- 11.3 If flag F is displayed on the race committee vessel with one sound signal between races, it will be removed after four minutes with one sound signal, followed one minute later by the warning signal for the next race.
- 11.4 If a start using a black flag is subject to a general recall the bow numbers of the boats identified as infringing RRS 30.3 may be displayed instead of the sail numbers. This amends RRS 30.3.
- 11.5 A boat starting later than 3 minutes after her starting signal will be scored Did Not Start. This changes RRS A4.1.
- 11.6 **Practice Starts:**
- (a) When a practice start is scheduled (SI 6.1), the race committee vessel will display an orange flag over flag U. The practice starting line will be between the staff displaying this signal and the start line outer distance mark.
  - (b) SI 11.1 will apply to practice starts.
  - (c) Boats shall race for 1 minute only after a practice start.

## **12 CHANGE OF COURSE AFTER THE START**

- 12.1 A change of course after the start will be signalled before the leading boat has begun the leg, although the new mark may not then be in position. Any mark to be rounded after rounding the new mark may be relocated to maintain the original course configuration without a further course change signal. This changes RRS 33.

## **13 THE FINISH**

- 13.1 The finishing line will be between a staff displaying an orange flag on the race committee vessel and the finish line outer distance mark.
- 13.2 When the race is shortened at a gate, the finishing line will be between the two buoys comprising the gate. This changes Race Signal S.
- 13.3 After the first boat has finished, the race committee may finish other boats at any mark of the course.
- (a) When a committee boat displays flag W with two sound signals, boats which have not yet rounded the nearby mark shall finish between this mark and the staff on the boat displaying W.
  - (b) When a boat finishes in accordance with this SI, she shall be awarded a finishing place after all boats that have completed more legs of the course and then finished.
  - (c) After flag W has been displayed any boat that fails to complete the leg she is sailing within the time limit for a valid race shall be awarded the place she is judged by the race committee to be occupying at the end of the time limit for that race.

## **14 PENALTY SYSTEM**

- 14.1 A boat that has taken a penalty or retired under RRS 31.2 or 44.1 shall acknowledge this in writing within the protest time limit. Acknowledgement sheets are available from and should be returned to the tally control point (SI 18.3(a)) or to the race office.
- 14.2 Immediate Penalties for Breaking RRS 42: RRS Appendix N will apply.

## **15 TIME LIMIT**

- 15.1 The time limit for a boat shall be 20 minutes after the first boat finishes after a valid start, except that if no boat finishes within 90 minutes of a valid start, the race will be abandoned.
- 15.2 If no boat has rounded the first mark within 30 minutes after a valid start, the race will be abandoned.

## **16 PROTESTS AND REQUESTS FOR REDRESS**

- 16.1 Protests forms are available at the race office. Protests shall be delivered there within the protest time limit.
- 16.2 The protest time limit is 90 minutes after the last boat has finished the last race of the day. This changes RRS 61.3 and 62.2.
- 16.3 Notices will be posted on the official notice board within 30 minutes of the protest time limit to inform competitors of hearings in which they are parties or named as witnesses. This is the notice under RRS 63.2.
- 16.4 Notices of protests by the race committee or jury will be posted on the official notice board to inform boats under RRS 61.1(b).
- 16.5 On the last day of scheduled racing, a party to a hearing may ask for a re-opening no later than one hour after being informed of the decision. This changes RRS 66.
- 16.6 Protests under SI 18 or SI 22 may be brought only by the race committee or jury and not by a competitor. This changes RRS 60.1.

## **17 SCORING**

- 17.1 The low points scoring system of RRS Appendix A will apply.
- 17.2 5 races are required to be completed to constitute a series.
- 17.3 Each boat's series score will be the total of her race scores, except that discards will be applied as follows:
- |                              |                  |
|------------------------------|------------------|
| Fewer than 6 races completed | All scores count |
| 6 races completed            | 1 discard        |
| 12 races completed           | 2 discards       |

## **18 SAFETY REGULATIONS**

- 18.1 Life-jackets or other adequate personal buoyancy shall be worn by all competitors at all times while afloat. Wet suits and dry suits are not adequate personal buoyancy. Flag Y will not be displayed. This changes RRS 40 and Race Signal Y.
- 18.2 Competitors shall obey instructions from official safety boats.
- 18.3 **Tallies.** The requirements of this SI are specified for the safety of competitors.
- (a) The tally control point to check-in and check-out competitors will be located at the top of the ramp to the dinghy park.
  - (b) Tallies comprise a pair of numbered rubber wrist bands matching the boat's bow number issued at or prior to registration (see SI 2 - Identification). Tallies shall be worn visibly (i.e. over clothing) on the wrist by both helm and crew at all times while afloat.
  - (c) Both helm and crew shall individually tally-out before racing by personally collecting his/her tally, and individually tally-in immediately on returning to shore after racing by returning the tally personally to tally control.
  - (d) Boats whose crew fail to comply may accept an alternative penalty for a first infringement by making a donation of £5 to the Royal National Lifeboat Institution. Otherwise the penalty will be disqualification from all races on the day concerned. This changes RRS 63.1 and A4.1.

## **19 REPLACEMENT OF CREW OR EQUIPMENT**

- 19.1 Substitution of competitors will not be allowed without prior written approval of the race committee.

- 19.2 Substitution of damaged or lost equipment will not be allowed unless approved by the race committee. Requests for substitution shall be made at the first reasonable opportunity.
- 19.3 Sail numbers other than those required by RRS G1.1(c) will only be allowed in exceptional circumstances and with the written permission of the race committee. Under no circumstances will a boat be permitted to use the sail number of another boat that is racing. This changes RRS 77.

## **20 EQUIPMENT AND MEASUREMENT CHECKS**

- 20.1 A boat or equipment may be inspected at any time for compliance with the class rules and sailing instructions. On the water, a boat may be instructed by a race committee measurer to proceed immediately to a designated area for inspection.

## **21 OFFICIAL BOATS**

- 21.1 Official boats will display a Yellow streamer.

## **22 SUPPORT BOATS**

- 22.1 Team leaders, coaches and other support personnel and boats shall remain more than 100 metres from the course area from the time of the preparatory signal until all boats have finished or the race committee signals a postponement, general recall or abandonment. Support boats will display a Blue streamer.
- 22.2 The penalty for failing to comply with SI 22.1 may be the disqualification of boats associated with the infringing personnel in that race, or such other penalty that the jury may decide.

## **23 RUBBISH DISPOSAL**

- 23.1 Boats shall not throw rubbish into the water. Rubbish may be deposited on support and official boats.

## **24 BERTHING**

- 24.1 Boats shall be kept in their assigned places in the boat park.

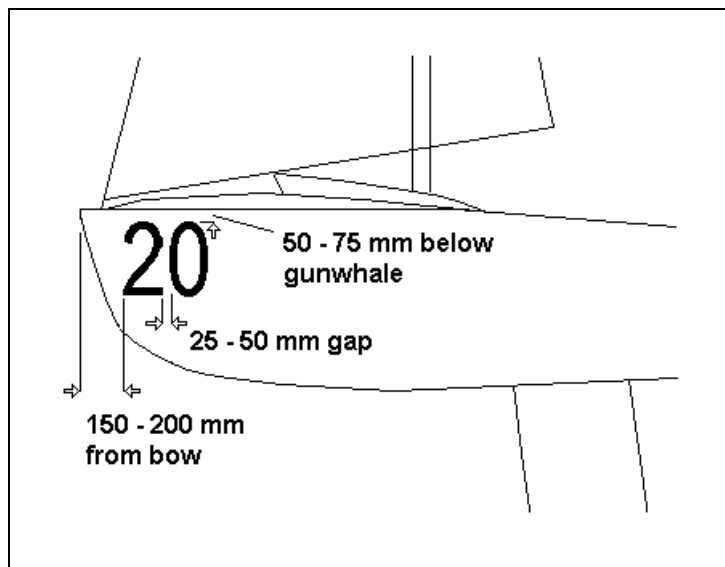
## **25 RADIO COMMUNICATION**

- 25.1 A boat shall neither make radio transmissions while racing nor receive radio communications not available to all boats. This restriction includes cellular telephones.

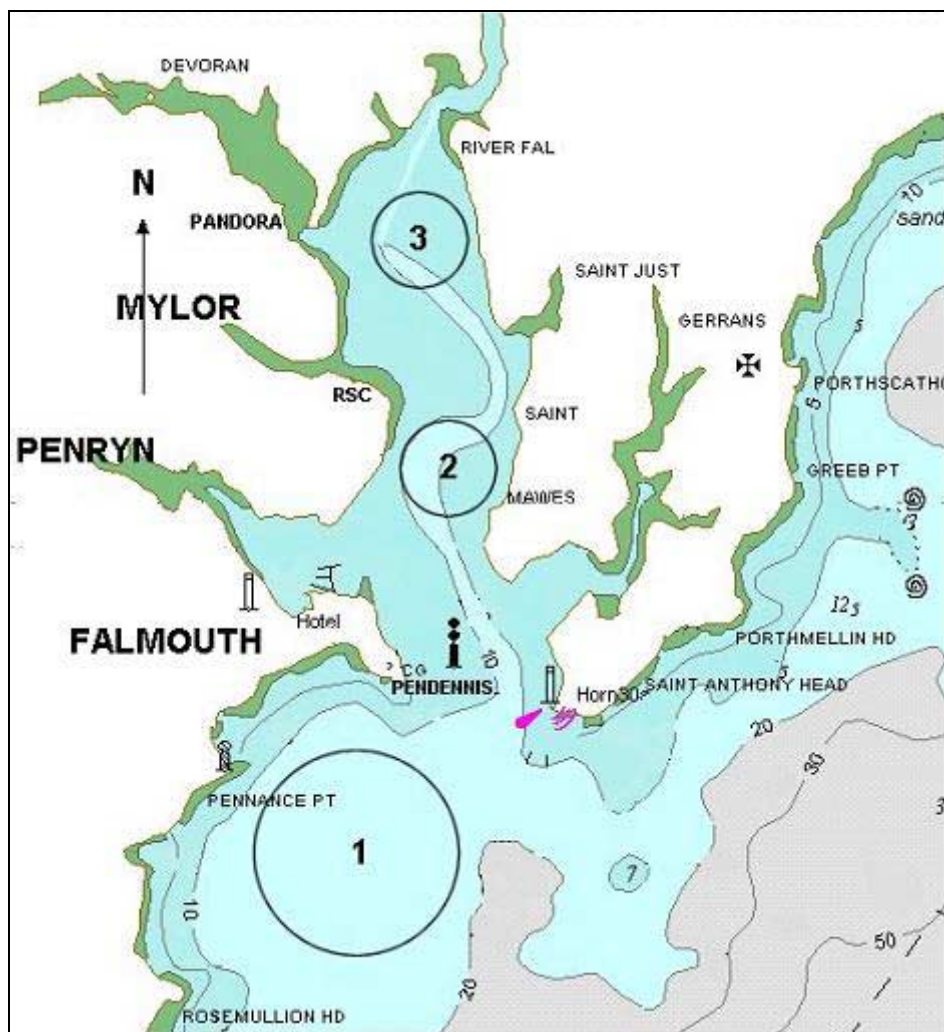
## **26 PRIZES**

- 26.1 Prizes are detailed in the Notice of Race.

## ATTACHMENT A - BOW NUMBER POSITION



## ATTACHMENT B – RACING AREAS

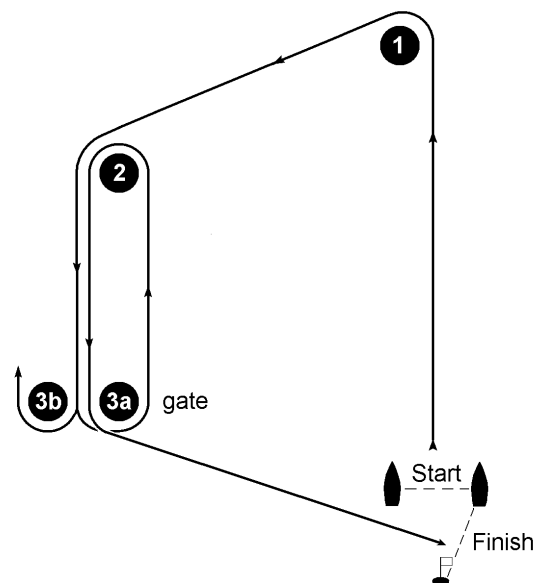


## ATTACHMENT C - COURSES

### COURSE 1

**Start, 1P, 2P, gate(3aP-3bS), 2P, 3aP, Finish**

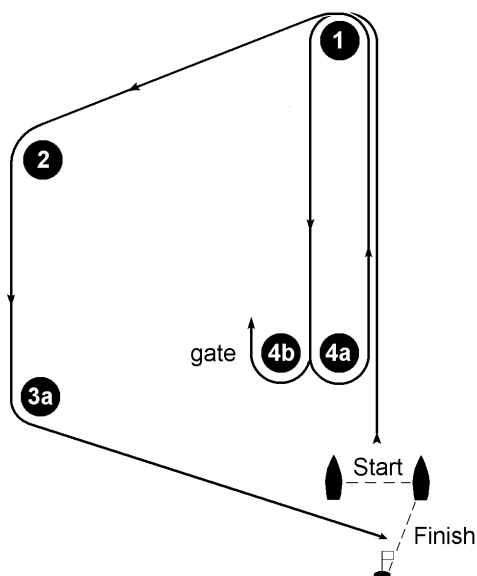
Sail this course when Pennant 1 is displayed at the warning signal.



### COURSE 2

**Start, 1P, gate(4aP-4bS), 1P, 2P, 3aP, Finish**

Sail this course when Pennant 2 is displayed at the warning signal.



### COURSE 3

**Start, 1P, gate(4aP-4bS), 1P, gate(4aP-4bS), 1P, 4aP, Finish**

Sail this course when Pennant 3 is displayed at the warning signal.

