

2005 BRITISH INTERNATIONAL 420 CLASS OPEN SELECTION REGATTA # 3

*30 April, 1 & 2 May 2005
Hayling Island Sailing Club*

SAILING INSTRUCTIONS

1 RULES

- 1.1 The regatta will be governed by the 'rules' as defined in the Racing Rules of Sailing.

2 ADDITIONAL IDENTIFICATION

- 2.1 All boats shall display bow numbers while racing. These will be issued at registration and shall be fixed to both sides of the bow as illustrated in Attachment A. If a bow number becomes lost or damaged so that, in the opinion of the race committee, it is unclear or unreadable, it must be replaced before the first race of the following day. Replacement numbers are available at 50p.
- 2.2 Boats sailed by all female crews shall display a red rhombus on both sides of the mainsail, above the top batten, approximately in the centre of the upper triangle. These will be available at registration.

3 NOTICES TO COMPETITORS

- 3.1 Notices to competitors will be posted on the official notice board, located on the north wall of the clubhouse, under the balcony.

4 CHANGES TO SAILING INSTRUCTIONS

- 4.1 Any change to the sailing instructions will be posted on the official notice board at least one hour before the advertised time of the launch signal on the day concerned, and signaled by displaying flag L ashore (SI 5.2). However, any change to the schedule of races will be posted by 19:00 hours on the day before it will take effect.

5 SIGNALS MADE ASHORE

- 5.1 Signals made ashore will be displayed from the signals masts on the club race control box.
- 5.2 Flag L will be displayed with a numeral pennant indicating the latest notice posted.
- 5.3 When flag AP is displayed ashore, 'warning signal' is replaced with 'launch signal' (SI 5.4) in Race Signal AP.
- 5.4 Flag R with two sounds is the launch signal. No boat shall leave the shore until this signal is made, though competitors may tally out beforehand.
- 5.5 Flag H displayed with flag R means racing will be held in Chichester Harbour.

6 SCHEDULE OF RACES

- 6.1 Racing is scheduled as follows (amends RRS J2.1(3) and Notice of Race):

Date 2005	Time of launch signal	Number of Races
Saturday 30 April	10:30	3
Sunday 1 May	09:30	3
Monday 2 May	09:30	2

- 6.2 The warning signal for the first race of each day will be made allowing boats sufficient time to reach the racing area after the launch signal.
- 6.3 Subsequent races on each day will start as soon as possible after the finish of the previous race.
- 6.4 One extra race per day may be sailed. If a fourth race is to be sailed, flag T will be displayed from the committee boat at the finishing line at the conclusion of the third race of the day.
- 6.5 It is intended that no warning signal will be made after 12:25 on Monday 2 May.

7 CLASS FLAGS

- 7.1 The class flag will be the International 420 class flag.

8 RACING AREA

- 8.1 The racing area includes Hayling Bay and Chichester Harbour.
- 8.2 The chart in Attachment B shows the location of the intended racing area in Hayling Bay.

9 THE COURSES

- 9.1 The diagrams in Attachment C show the courses, including the course signals, the order in which marks are to be passed, and the side on which each mark is to be left.
- 9.2 No later than the warning signal, the race committee boat will display:
 - (a) The course to be sailed.
 - (b) The approximate compass bearing of the first leg.
- 9.3 Marks 3 and 4 are shown as gates, (3S-3P) and (4S-4P), which the race committee may replace by single marks 3 and/or 4. If a single mark 3 or 4 is used, it is to be left to port. When there is a gate, boats shall sail between the gate marks from the direction of the previous mark and round either gate mark.

10 MARKS

- 10.1 Marks 1, 2, 3S, 3P, 4S, and 4P will be yellow inflatable buoys.
- 10.2 Starting marks will be as follows:
 - (a) Starboard end: a race committee signal boat displaying an orange flag, and including any buoy, object or boat attached to it for the duration of the starting period.
 - (b) Port end: an orange inflatable buoy.
- 10.3 Finishing marks will be a race committee boat displaying a blue flag and a dan-buoy with a blue flag.

11 THE START

- 11.1 Races will be started in accordance with RRS 26.
- 11.2 The starting line will be between the staff or mast displaying an orange flag on the starboard end starting mark, and the port end starting mark.
- 11.3 If flag F is displayed on the race committee boat with one sound, it will be removed after four minutes with one sound, followed one minute later by the warning signal for the next race.
- 11.4 If a start using a black flag is subject to a general recall either the bow numbers or the sail numbers of the boats identified as infringing RRS 30.3 may be displayed. This amends RRS 30.3.
- 11.5 A boat starting later than 3 minutes after her starting signal will be scored DNS. This changes RRS A4.1.
- 11.6 If a boat fails to start or breaks RRS 30.3, the race committee at mark 1, or another rounding mark, may display her sail number or bow number on a board to notify her. The notified boat shall immediately leave the course area.

12 THE FINISH

- 12.1 The finishing line will be between the staff or mast displaying an orange flag on the race committee boat, and the finishing line outer distance mark.
- 12.2 After the first boat has finished, the race committee may set alternative finishing lines as follows:
 - (a) When a committee boat displays flag W with two sounds, boats that have not yet rounded the nearby mark shall finish between this mark and the staff on the boat displaying flag W.
 - (b) When a boat finishes in accordance with this SI, she will be awarded a finishing place after all boats that have completed more legs of the course and then finished.

13 PENALTY SYSTEM

- 13.1 A boat that has taken a penalty under RRS 31.2 or 44.1 shall complete an acknowledgment form at the race office within the protest time limit.
- 13.2 Appendix P will apply.
- 13.3 The race committee may override RRS 42:
 - (a) No later than the warning signal, the race committee may display flag O to signal that pumping, rocking and ooching are allowed as specified in class rule C2.1.2.1.

- (b) After the starting signal, the race committee may display flag O with repetitive sounds at any rounding mark to signal that pumping, rocking and ooching are allowed as specified in class rule C2.1.2.1. This SI applies to a boat after she has passed the mark.
- (c) If the race committee has acted under (a) or (b) and the wind speed becomes less than the limit specified in class rule C2.1.2.1, the race committee may display flag R with repetitive sounds at any rounding mark to signal that RRS 42 applies. This SI applies to a boat after she has passed the mark.

14 TIME LIMIT

- 14.1 The time limit is 90 minutes.
- 14.2 The mark 1 time limit is 30 minutes. If no boat has passed mark 1 within the mark 1 time limit the race will be abandoned.
- 14.3 Boats failing to finish within 20 minutes after the first boat completes the course in accordance with RRS 28.1 will be scored DNF. This changes RRS 35 and A4.

15 PROTESTS & REQUESTS FOR REDRESS

- 15.1 Protests forms are available at the race office. Protests shall be delivered there within the protest time limit.
- 15.2 The protest time limit is 90 minutes after the last boat has finished the last race of the day. This changes RRS 61.3 and 62.2.
- 15.3 Notices will be posted within 30 minutes of the protest time limit to inform competitors of hearings in which they are parties or named as witnesses.
- 15.4 Notices of protests by the race committee or protest committee will be posted to inform boats under RRS 61.1(b).
- 15.5 A list of boats that, under SI 13.2, have acknowledged breaking RRS 42 or have been disqualified by the protest committee will be posted before the protest time limit.
- 15.6 Breaches of SIs 2, 13.1, 17, 18.2, 21, and 22 will not be grounds for protest by a boat. This changes RRS 60.1(a). Penalties for these breaches may be less than disqualification if the protest committee so decides.
- 15.7 On the last day of the regatta a request for reopening a hearing shall be delivered:
 - (a) Within the protest time limit if the party requesting reopening was informed of the decision on the previous day.
 - (b) No later than 30 minutes after the party requesting reopening was informed of the decision on that day.
 This changes RRS 66.
- 15.8 Decisions of the protest committee will be final as provided in RRS 70.4.

16 SCORING

- 16.1 Two races are required to be completed to constitute a series. A boat's series score will be the total of her race scores, except that if 4 or more races are completed there will be 1 discard.
- 16.2 The regatta races will contribute to the selection series, which will be scored as stated in the Notice of Race.

17 SAFETY REGULATIONS

- 17.1 Competitors shall wear life jackets or other adequate personal buoyancy at all times while afloat. See class rule C.4.1. Wet suits and dry suits are not adequate personal buoyancy. Flag Y will not be displayed. This changes RRS 40.1 and Race Signal Y.
- 17.2 **Tallies.** The requirements of this SI are specified for the safety of competitors.
 - (a) The tally control point to check-in and check-out competitors will be located at the top of the South launching ramp.
 - (b) Tallies comprise a pair of numbered rubber wristbands matching the boat's bow number (see SI 2.1), issued at or prior to registration. Tallies shall be worn visibly (i.e. over clothing) on the wrist by both helm and crew at all times while afloat.
 - (c) Both helm and crew shall individually tally-out before racing by personally collecting their tally, and individually tally-in immediately on returning to shore after racing by returning the tally personally to tally control.
 - (d) Boats whose crews fail to comply may accept an alternative penalty for a first infringement by making a donation of £5 to the Royal National Lifeboat Institution. Otherwise the penalty will be disqualification from

all races on the day concerned. Infringements will be posted on the official notice board before the protest time limit. This changes RRS 63.1.

- 17.3 **Prohibited Area:** The West Pole sands are a prohibited area (see chart in Attachment A). The sands, which extend from Eastoke Point at the western side of the Harbour entrance out to the Chichester Bar Beacon, are shallow and a difficult area for safety boats to operate in. All boats shall pass the Chichester Bar Beacon to starboard on the way out to the racing area, and, on returning, shall leave the Beacon to port.
- 17.4 Boats wishing to sail ashore before the end of the day's racing shall not do so unless permitted by a safety boat. The safety boat will instruct boats in the procedure for returning ashore.
- 17.5 Boats failing to follow the instructions of safety boats will be reported to the protest committee, which may protest the boat. Boats penalised under this SI may be scored DNE. This amends RRS 64.1(a).

18 REPLACEMENT OF CREW OR EQUIPMENT

- 18.1 Substitution of competitors will not be allowed without prior written approval of the race committee.
- 18.2 Substitution of damaged or lost equipment will not be allowed unless approved by the race committee. Requests for substitution shall be made to the race committee at the first reasonable opportunity.

19 EQUIPMENT AND MEASUREMENT CHECKS

- 19.1 A boat or equipment may be inspected at any time for compliance with the class rules and sailing instructions. On the water, a boat may be instructed by a race committee measurer to proceed immediately to a designated area for inspection.
- 19.2 Class rule A.9.6 will not apply. Sail buttons are not required.

20 OFFICIAL BOATS

- 20.1 Official boats will be marked as follows:

Protest committee boats	White flag with letters PC.
Race committee & safety boats	Pink flag with identifying numerals.
Measurer boats	White flag with letters MEASURER.

21 SUPPORT BOATS

- 21.1 Team leaders, coaches and other support personnel and boats shall remain more than 100 metres from the course area from the time of the preparatory signal until all boats have finished or the race committee signals a postponement, general recall or abandonment. The course area is defined as the area bounded by all the racing marks and any boat(s) racing on the course.

22 RUBBISH DISPOSAL

- 22.1 Boats shall not throw rubbish into the water. Rubbish may be deposited on support and official boats.

23 RADIO COMMUNICATION

- 23.1 A boat shall neither make radio transmissions while racing nor receive radio communications not available to all boats. This restriction includes mobile telephones.

24 PRIZES

- 24.1 Prizes are detailed in the Notice of Race.

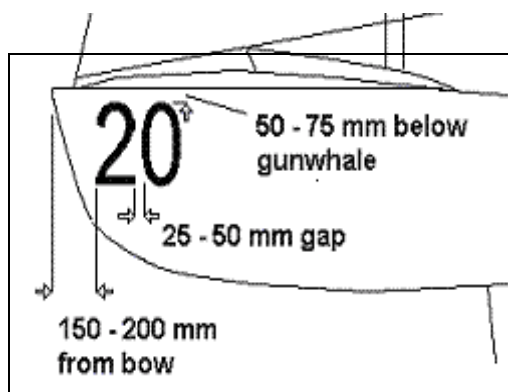
25 DISCLAIMER OF LIABILITY

- 25.1 Competitors participate in the regatta entirely at their own risk. See RRS 4, Decision to Race. The organizing authority will not accept any liability for material damage or personal injury or death sustained in conjunction with or prior to, during, or after the regatta.

26 INSURANCE

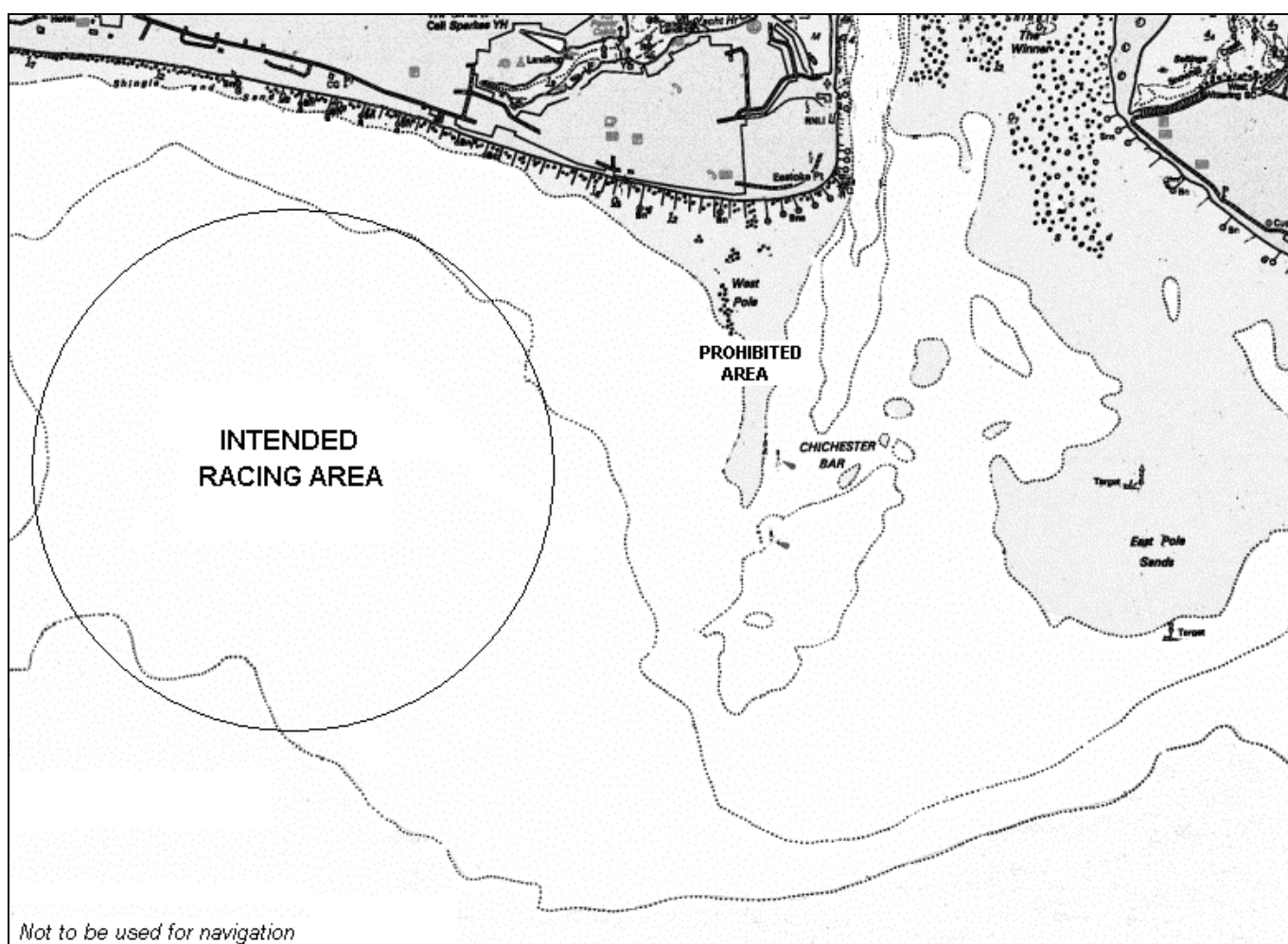
- 26.1 Boats are required to be adequately insured including insurance against third party claims of at least £2m or the equivalent in other currencies.

Attachment A



Attachment B

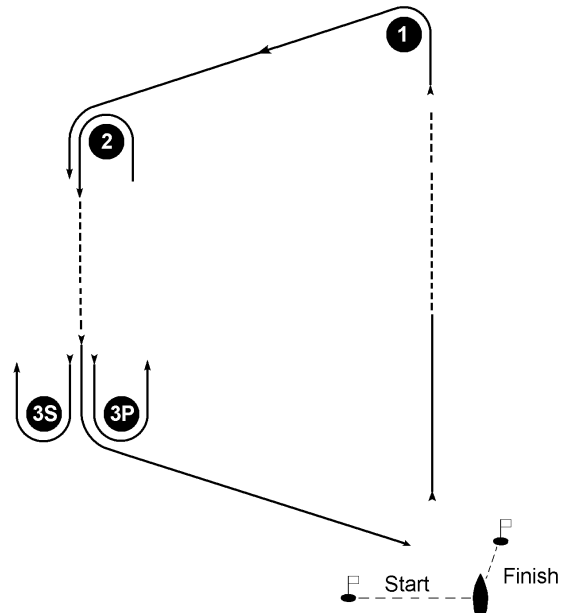
RACING AREA – HAYLING BAY



Attachment C

COURSE DIAGRAMS

TRAPEZOID OUTER

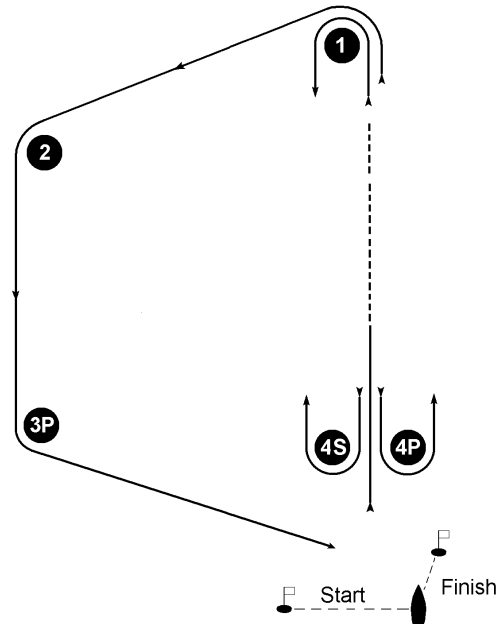


Signal: **Mark rounding order:**

O 1 Start, 1, 2, 3S/P, 2, 3P, Finish

O 2 Start, 1, 2, 3S/P, 2, 3S/P, 2, 3P, Finish

TRAPEZOID INNER

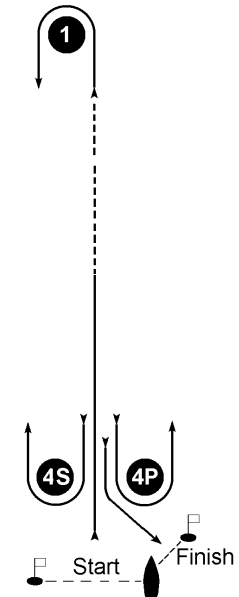


Signal: **Mark rounding order:**

I 1 Start, 1, 4S/P, 1, 2, 3P, Finish

I 2 Start, 1, 4S/P, 1, 4S/P, 1, 2, 3P, Finish

WINDWARD - LEEWARD



Signal: **Mark rounding order:**

W 1 Start, 1, 4S/P, 1, 4P, Finish

W 2 Start, 1, 4S/P, 1, 4S/P, 1, 4P, Finish