

BREST 2005

"A different Outlook on sailing"

INTERNATIONAL 420 CLASS

2005 WORLD CHAMPIONSHIP

27th July - 5th August 2005

ORGANISING AUTHORITY

The 420 International Class, in conjunction with
the French National Class (UNIQUEA-FRANCE) and
the Société des Régates de Brest

Hosted By
Société des Régates de Brest

SAILING INSTRUCTIONS

1 RULES

- 1.1 The regatta will be governed by:
- a) the 'Rules' as defined in *The Racing Rules of Sailing*.
 - b) the Measurement Instructions
 - c) the ISAF Equipment Rules of Sailing
 - d) these Sailing Instructions
 - e) the 420 international class rules except that changed by these Sailing Instructions.
- 1.2 The prescription of the "Fédération Française de Voile" will not apply
- 1.3 Charter boat:
According to Appendix **G** Rules **G3**, "a boat chartered or loaned for an event may carry national letters or a sail number in contravention of her class rules"
- 1.4 If there is a conflict between languages, the English text will take precedence
- 1.5 The regatta is designated Category C in accordance with appendix G.

2. IDENTIFICATION

2.1 While racing, boats shall display bow numbers. The organizing authority will supply the numbers and instructions for their use.

2.2 Each day while racing, the first, second and third boats in series scores at the beginning of the day shall respectively display a yellow, blue and red sticker.

The organizing authority will supply the stickers that will be distributed at the information desk, 09:00 hours.

Stickers shall be affixed back to back on both side of the mainsail in the middle part, otherwise below the sail numbers.

2.3 While racing, each boat shall display a colored ribbon corresponding to the fleet to which she has been assigned. The ribbon shall be fixed to the top of her mast. Ribbons shall be available from the Race Office.

3 CAMERA AND ELECTRONIC EQUIPMENT

Boats may be required to carry cameras, sound equipment or positioning equipment as specified by the organizing authority.

4. NOTICES TO COMPETITORS

Notice to competitors will be posted on the official notice board(s) located at Penouppelle room on the ground floor of the Société des Régates de Brest.

5. CHANGES TO SAILING INSTRUCTIONS

Any change to the sailing instructions will be posted no later than two hours before the warning signal of the race it will take effect, except that any change to the schedule of races will be posted by 20:00 hours on the day before it will take effect.

However, any reassignment of Classes to racing areas will be posted before flag D is lowered; see instruction 6.2.

6. SIGNALS MADE ASHORE

6.1 Signals made ashore will be displayed at the flagpole located in front of the to the Société des Régates de Brest.

When a signal is displayed over an area flag, a group flag or a class flag, it applies to that area, group or class only.

6.2 Flag **D** with a sound signal means: “the warning signal will be made not less than 45 minutes after flag D is displayed”. Boats are requested not to leave the harbour until this signal is made.

7. QUALIFYING SERIES AND FINAL SERIES

7.1. The World Championship- will consist of qualifying series and final series as described in Appendix **C** of these Sailing Instructions

7.2. The Ladies World Championship will consist only of final series.

8. SCHEDULE OF RACE

8.1. Racing is scheduled as follows:

Day 1 July 27 th	Registration and measurement	10 h / 17h
Day 2 July 28 th	Registration and measurement	10 h / 17h
Day 2 July 28 th	Opening ceremony	18 h 30
Day 3 July 29 th	Registration and measurement	10 h / 17h
Day 3 July 29 th	Practice Race: warning signal	14 h
Day 4 July 30 th	Qualifying series-Open World, Ladies World races	10h 30
Day 5 July 31 st	Qualifying series- Open World, Ladies World races	10 h 30
Day 6 August 1 st	Lay day	
Day 7 August 2 nd	Qualifying/Final series- Open World, Ladies World races	10 h 30
Day 8 August 3 rd	Qualifying/Final series- Open World, Ladies World races	10 h 30
Day 9 August 4 th	Qualifying/Final series- Open World, Ladies World races	10 h 30
Day 10 August 5 th	Open Final series- World, Ladies World races Prize Giving and Closing Ceremony.	10 h 30 19 h

8.2. The numbers of races scheduled are as follows:

a) Open World Championship

Qualifying series: **6** races

Final series: **12** races, (including the race No.**Q** as defined in instruction **19.2.b** and in Appendix **C** of these Sailing Instructions)

b) Ladies World Championship - Final series: **12** races

8.3 No more than **three** races will be sailed each day.

8.4 The scheduled time of the warning signal for the first race each day is 0930 hrs.

8.5 When more than one race will be held on the same day, the warning signal for each succeeding race will be made as soon as practicable. To alert boats that a race or sequence of races will begin soon, an **orange** flag will be displayed with one sound signal for at least **four** minutes before a warning signal is displayed.

8.6 On the last day of the regatta no warning signal will be made after 1430 hrs

9. CLASS FLAGS

9.1. Open World Championship

a) Qualifying series:

Fleet – **White**

Fleet – **Violet**

Fleet – **Pink**

Fleet – **Red**

b) Final series

Gold fleet – **White**

Silver fleet – **Red**

9.2. Ladies World Championship

Final series: International 420 Class Flag

10. RACING AREA

Appendix **A** of these Sailing Instructions shows the location of racing areas.

11. THE COURSES

11.1 The diagrams in Appendix **B** of these Sailing Instructions show the courses

11.2 No later than the warning signal, Numerical pennant N°**1** or **2** will be hoisted to indicate the course to be sailed

Numerical pennant N°**1**: Trapezoid **Outer** Loop

Numerical pennant N°**2**: Trapezoid **Inner** Loop

11.3 No later than the warning signal, the race committee signal boat will display if possible the approximate compass bearing of the first leg.

11.4 When there is a gate, boats shall sail between the gate marks from the direction of the previous mark and round either gate mark

12. MARKS

12.1 Marks **1, 2, 3S, 3P, 4S, 4P** and **5** will be: **red**

12.2 The finishing marks will be: Staffs displaying orange flags.

12.3 Change Course mark will be: **yellow buoy**

13. THE START

13.1 Races will be started using Rule **26**

13.2 The starting line will be between a staff displaying orange flag on the starting vessel on starboard and a staff displaying an orange flag on the port side vessel.

13.3 Boats whose warning signal has not been made shall avoid the starting area

13.4 A boat starting later than **3** minutes after her starting signal will be scored **DNS**. This changes Rule **A4** and **A5**.

14. CHANGE OF POSITION OF THE NEXT MARK

To change the position of the next mark, the race committee will lay a new mark (or move the finishing line) and remove the original mark as soon as practicable. The change will be signalled before the leading boat has begun the leg, although the new mark may not yet be in position. Any mark to be rounded after rounding the new mark may be relocated without further signalling to maintain the course shape. When in a subsequent change a new mark is replaced, it will be replaced by an original mark.

15. THE FINISH

15.1 The race committee boat will display a blue flag when the race committee boat is in position at the finishing line.

15.2 the finishing line will be between a staff displaying **orange** flag on the finishing boat at the port end and the starboard-end finishing mark.

15.3 If code flag **L** is hoisted on the Race Committee vessel at the finishing line, it means that another race will be held as soon as practicable

16. PENALTY SYSTEM

16.1 A boat that has taken a penalty or retired under Rule **31.2** or **44.1** shall complete an acknowledgement form at the race office within the protest time limit.

16.2 Appendix **P** will apply. (as changed by instruction **16.3**)

16.3 Rule **P2.3** will not apply and Rule **P2.2** is changed so that it will apply to any protest after the first one.

16.4 Propulsion: 420 class rule C2.1.2 is amended as follows:

- (a) No later than the warning signal, the race committee may display a code flag "O" to signal that pumping, rocking and ooching are allowed as specified in the class rules.
- (b) After the starting signal, the race committee may display a code flag "O" with repetitive sounds at any rounding mark to signal that pumping, rocking and ooching are allowed as specified in the class rules. This instruction applies to a boat after she has passed the mark.
- (c) If the race committee has acted under instruction 16.4 a) or 16.4 b) and the wind speed becomes less than the 13 knots limit specified in the class rules, the race committee may display code flag "R" with repetitive sounds at any rounding mark to signal that rule 42, as changed by the class rules, applies. This instruction applies to a boat after she has passed the mark.

17. TIME LIMITS AND TARGET TIMES

17.1 Time limit = **90** minutes

17. Target time = **60** minutes

17.3 Mark **1** time limit = **30** minutes. If no boat has passed Mark **1** within the Mark **1** time limit the race will be abandoned.

17.4 Boats failing to finish within **20** minute after the first boat sails the course and finishes will be scored Did Not Finish (**DNF**). This changes Rules **35** and **A4** and **A5**.

18. PROTESTS, REQUEST FOR REDRESS

18.1 A boat that protests shall inform the race committee finish boat immediately after finishing that race of her intention to lodge a protest and be sure that the **RC** acknowledges the intention. If the protesting boat did not finish, she will inform any race committee boat if possible or the regatta office as soon as arrived on shore.

18.2 Protest forms are available at the race office. Protests shall be delivered there within the protest time limit.

18.3 The protest time limit is **90** minutes after the last boat has finished the last race of the day. The same time limit applies to protests by the race committee and jury about incidents they observe in the racing area and to requests for redress. This changes Rules **61.3** and **62.2**.

18.4 Notices will be posted within **30** minutes of the protest time limit to inform competitors of hearings in which they are parties or names as witnesses. Hearings will be held in the jury room, located at one of the following rooms Héron; Fou de Bassan or Goéland situated at the end of the "Centre Nautique" main building.

18.5 Notices of protests by the race committee or International Jury will be posted to inform boats under Rule **61.1(b)**.

18.6 A list of boats that, under instruction **16.2**, have acknowledged breaking Rule **42** or have been disqualified by the International jury will be posted before the protest time limit.

18.7 Breaches of instructions **2, 3, 13.3, 16.1, 16.4, 20, 21.2, 24, 25** and **26** will not be grounds for a protest by a boat. This changes Rule **60.1(a)**. Penalties for these breaches may be less than disqualification if the International jury so decides.

18.8 On the last day of qualifying series, and on the last day of the regatta a request for reopening a hearing shall be delivered:

- a.** within the protest time limit if the party requesting reopening was informed of the decision on the previous day.
- b.** no later than **30** minutes after the party requesting reopening was informed of the decision on that day. This changes Rule **66**.

18.9 On the last day of the regatta a request for redress from an International jury decision shall be delivered no later than 30 minutes after the decision was made. This changes Rule **62.2**.

18.10 Decisions of the International jury will be final as provided in Rule **70.4**.

19. SCORING

19.1 The low point scoring system of appendix **A** shall apply (**RRS Appendix A**).

19.2 Men World Championship

19.2.1 Qualifying series:

- a. There will be **6** Qualifying series races with **one** discard.
- b. The Qualifying series results shall be converted to race scores. These races scores shall be treated in all aspects as a race score for the final series (race No. **Q**).
- c. The result of each round in the Qualifying series will be valid when all the boats complete this round (see appendix C of these Sailing Instructions).

19.2.2 there will be **11** races plus the Qualifying series result (total **12** scores in the results)

- a. **2** final series races (**3** results in the final series including the race **Q**), are required to be completed to constitute a final series.
- b. When **3** races have been completed in the final series, a boat score will be the total of her race in the race **Q** and the series, excluding her worst score.
- c. When **4** to **7** final series races have been completed, (**5-8** including race **Q**) a boat's score will be the total of her race scores in the final series excluding her worst score.
- d. When **8** or more final series have been completed (**9-12** including race **Q**) a boat's scores shall be the total of her race scores in the final series excluding her two worst scores.

See also appendix **C**

19.3 Ladies World Championship

- a. **5** races are required to be completed to constitute a series.
- b. When from **5** to **8** races have been completed, a boat's series score will be the total of her race scores excluding her worst score.
- c. When **9** or more races have been completed, a boat's series score will be the total of her race scores excluding her two worst scores.

19.4 To request correction of an alleged error in posted race or series results, a boat shall complete a scoring enquiry form available at the race office.

19.5 The scoring abbreviation for a discretionary penalty imposed under instruction **18.7** will be **DPI**

19.6 When boats sail in a series in groups as provided in **Appendix C**, for the purposes of **RRS A.4.2**, the points to be scored shall be based on the number of boats sailing in each race. A boat that did not start, did not finish, retired after finishing or was disqualified will be scored points for the finishing place one more than the number of boats assigned to the two groups sailing in the race. This changes **RRS A.4.2**.

20.SAFETY REGULATION

20.1 Check-in and check out:

Before leaving, all boats shall sign-on the sheets provided outside Penoupelle room on the ground floor of the Société des Régates de Brest. After coming ashore after the race or retirement all boats shall sign-off before the end of the protest time limit on the sheets provided outside Penoupelle room on the ground floor of the Société des Régates de Brest.

When boats reach the race area they shall pass across the stern of the committee vessel at the starboard end of the line such that their sail number is visible, hail their number and be acknowledged.

Failure to complete these safety requirements may result in disqualification from the race after protest

20.2 A boat that retires from a race shall notify the Race Committee as soon as possible. When signing-off according to 20.1, this boat shall declare such retirement.

20.3 While afloat, all competitors shall wear life-jackets or other adequate personal buoyancy under all circumstances. Dry suits or wet suits are not adequate personal buoyancy. This changes Rule 40.

21. REPLACEMENT OF CREW OR EQUIPMENT

21.1 Substitution of competitors will not be allowed without prior written approval of the Race Committee .

21.2 Substitution of damaged or lost equipment will not be allowed unless approved by the Race Committee. Requests for substitution shall be made to the Race Committee at the first reasonable opportunity.

22. EQUIPMENT AND MEASUREMENT CHECKS

22.1 A boat or equipment may be inspected at any time for compliance with the class rules and sailing instructions. On the water, a boat can be instructed by a race committee measurer to proceed immediately to a designated area for inspection (see also Measurement Instructions).

23. OFFICIAL BOATS

23.1 General rule for official boat

All official boat will display a "Société des Régates de Brest" flag:

- Race committee boats
- Safety boats

23.2 Race committee mark boats will be stationed beyond each mark. Each mark boat will display a "Société des Régates de Brest" and a red flag. Failure of mark boat to be on station or to display her signal will not be grounds for redress.

23.3 Jury Boats

In addition with the "Société des Régates de Brest" flag, jury boats will display a yellow flag marker "JURY"

23.4 Measurer boats

In addition with the "Société des Régates de Brest" flag, measurement boats will display a yellow flag marker "MEASUREMENT"

24. SUPPORT BOATS

24.1 Team leaders, coaches and other support personal shall stay outside areas where boats are racing from the time of the preparatory signal for the first fleet to start until all boats have finished or race committee signals a postponement, general recall or abandonment

24.2 During starting procedure support boat shall stay at leeward of the starting line, at a minimum distance of one hundred meters.

24.2 The coach boats shall fly, for their identification a minimum **30 x 20** cm white flag with the national letters of their respective country while afloat or ISAF coach identification

25. TRASH DISPOSAL

25.1 Boats shall not put trash in the water. Trash shall be placed aboard support and race committee boats.

26. BERTHING

26.1 Boats shall be kept in their assigned places in the boat park.

27. RADIO COMMUNICATION

27.1 A boat shall neither make radio transmissions while racing nor receive radio communications not available to all boats. This restriction also applies to mobile telephones.

28. PRIZES

28.1 Prizes will be given as follows:

The first **three** crews in **Gold**, **Silver** and **Ladies** fleets ranking lists shall be given a trophy.

The first **three** crews in **World** and **Ladies World** championships shall receive a **gold, silver** and **bronze** medal.

At least, the first 20% of crews in the **Gold** and **Ladies** ranking lists shall be given a souvenir of the event.

The prizes are given to both member of a crew.

29. TROPHIES

29.1 THE INTERNATIONAL 420 CLASS WORLD CHAMPIONSHIP CHALLENGE CUP

This trophy is awarded to the highest placed boat in the Open Championship
First awarded Bendor, France, 1961

29.2 THE INTERNATIONAL 420 CLASS LADIES WORLD CHAMPION CHALLENGE CUP

This trophy is awarded to the highest placed boat in the Ladies Championship
First awarded Neiwpoort, Belgium 1986

29.3 William Sanchez Trophies (2)

These trophies are awarded to the highest placed boat, both aged 16 or under, at the end of the year. One for the World fleet and one for the Ladies fleet.
First awarded La Rochelle, France 2000

29.4 The Huck Scott Memorial Trophy

This trophy is awarded to the youngest boat crew competing in the championship, in either the Open or the Ladies. The lowest combined age (helm and crew), at the end of the year will be used.
First awarded Freemantle, Australia, 1995

29.5 The John Merricks Trophies (2)

These trophies are awarded to the highest placed team, both aged 18 or under, at the end of the year. One for the World Fleet and one for the Ladies fleet
First awarded Hayling Island England 2003

29.6 Francis Mouvet Trophy

This trophy will be awarded to the nation who has the highest placed 3 boats in the Open World Championship using both the World and Ladies fleets.
First awarded for pre world fleet race Italy 1991. 420 World Team Race trophy 1996 – 2003 (No team race due to weather 2004). National Team award as above from 2005.

30. DISCLAIMER OF LIABILITY

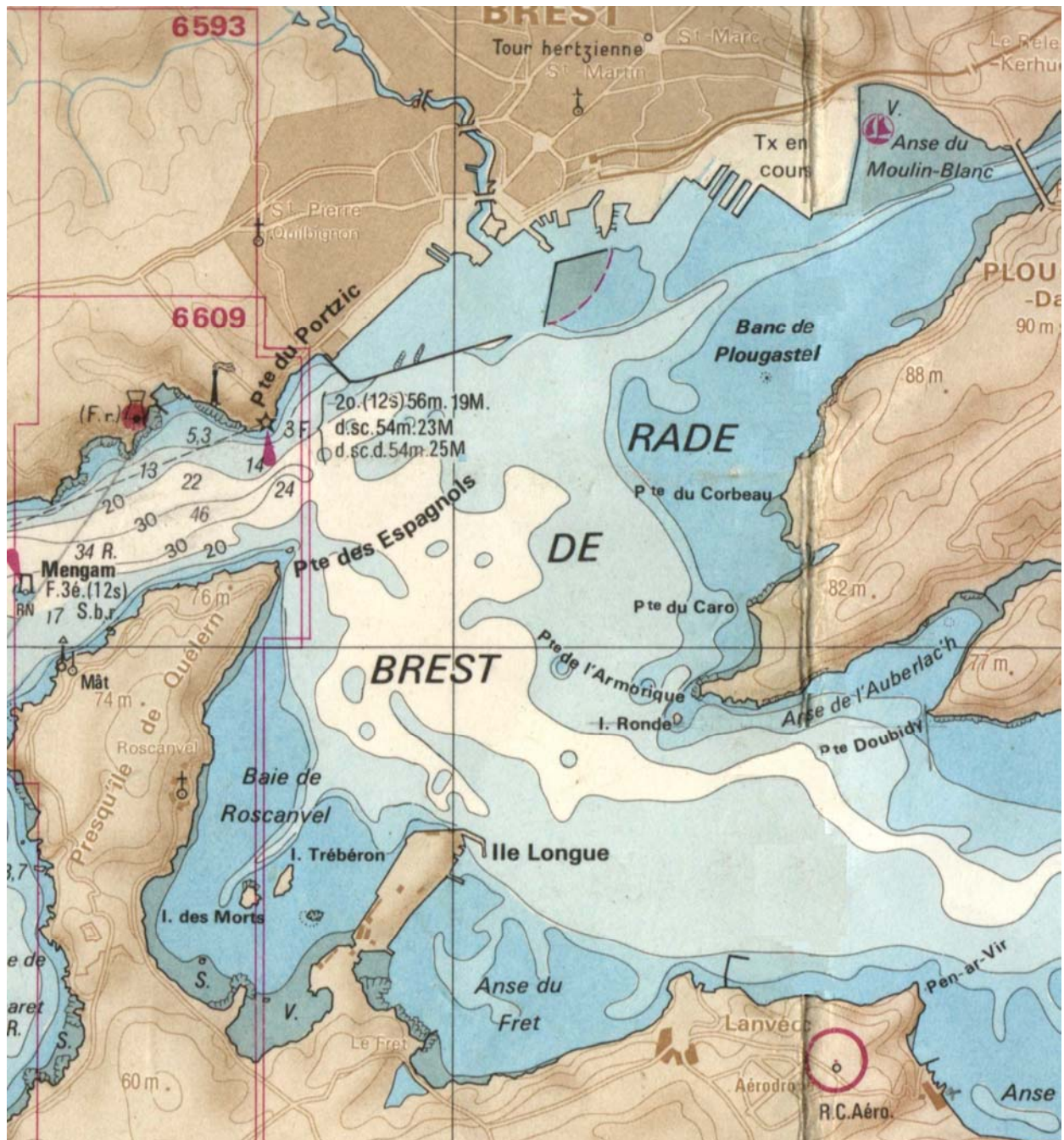
30.1 Competitors participate in the regatta entirely at their own risk. See Rule 4: Decision to race. The organizing authority will not accept any liability for material damage or personal injury or death sustained in conjunction with or prior to, during, or after the regatta.

31. INSURANCE

31.1 Each participating boat shall be insured with valid third-party liability insurance with a minimum cover of **1.500.000 EURO** per event or the equivalent.

Appendix A

RACING AREA



Appendix C

QUALIFYING SERIES AND FINAL SERIES

INITIAL ASSIGNMENT OF BOATS TO FLEETS

The registered boats are shared in 4 fleets **White**, **Purple**, **Pink** and **Red** as follows:

A list of all the competitors is established, sorted by nations with alphabetical order with **ISAF** national letters. In each country list, the queue number of the crews is defined by draw.

We will have a list for example as follows:

ARG 1 ARG 2
AUS 1 AUS 2 AUS 3 AUS 4 AUS 5 AUS 6 AUS 7
AUT 1 AUT 2 AUT 3 AUT 4
BEL 1 BEL 2 BEL 3 etc.

The first of the list is assigned in fleet **White**, the second in fleet **Purple**, the third in fleet **Pink**, the fourth in fleet **Red**, the fifth in fleet Yellow and so on:

Fleet White

ARG 1
AUS 3
AUS 7
AUT 4

Fleet Purple

ARG 2
AUS 4
AUT 1
BEL 1

Fleet Pink

AUS 1
AUS 5
AUT 2
BEL 2

Fleet Red

AUS 2
AUS 6
AUT 3
BEL 3 etc.

QUALIFYING SERIES ASSIGNMENT OF BOATS TO FLEETS

The Qualifying series will be held in two sets of three races. Each fleet will races once with each other fleet in each set of races.

Race 1:	White versus Purple		Race 4:	Pink versus Red
	Pink versus Red			White versus Purple
Race 2:	White versus Pink		Race 5:	Purple versus Red
	Purple versus Red			White versus Pink
Race 3:	White versus Red		Race 6:	Purple versus Pink
	Purple versus Pink			White versus Red

The result of each round in the Qualifying series will be valid when all the boats have completed this round.

FINAL SERIES ASSIGNMENT OF BOATS TO FLEETS

Boats will be assigned to one of the **2** final series fleets on the basis of their qualifying series scores. Boats with the half best qualifying-series scores will race all final series races in the **GOLD** fleet, boats with the rest-best qualifying series scores will race in the **SILVER** fleet. If the total number of boats is odd number, the half upper round number of boats will be assigned in the **GOLD** fleet.