

2003
INTERNATIONAL 420 CLASS WORLD CHAMPIONSHIP
INTERNATIONAL 420 CLASS LADIES WORLD CHAMPIONSHIP

HAYLING ISLAND SAILING CLUB
HAYLING ISLAND, HAMPSHIRE, ENGLAND
16TH JULY TO 25 JULY 2003

SAILING INSTRUCTIONS

1. RULES

- 1.1** The event will be governed by:
The "Rules" as defined in the ISAF Racing Rules of Sailing
The ISAF Equipment Racing Rules of Sailing
The Measurement Instructions

If there is a conflict between the Notice of Race and the Sailing Instructions, the Sailing Instructions shall prevail.

- 1.2** The prescriptions of the Royal Yachting Association will not apply except the prescription relating to RRS 68 - Damages.

1. Any claim for damages arising from an incident while a boat is bound by the Racing Rules of Sailing shall be subject to the jurisdiction of the courts and not considered by a protest committee.
2. A boat that takes a penalty or retires does not thereby admit liability for damages or that she has broken a rule.

This alters RRS 68

- 1.3** If there is a conflict between languages the English text will prevail.

2. IDENTIFICATION

- 2.1** Boats will be required to display on each side of the hull:
- a. A bow number on the forward 600 mm of the hull.
 - b. Advertising of the event sponsor 600mm to 1650mm from the stern.
- 2.2** On the second and subsequent days' racing, the three boats having the best series score at the beginning of the day shall display stickers as follows: First place yellow, second place blue and third place red.

The organizing authority will supply the stickers and instructions for their use.

- 2.3** While racing, each boat shall display a coloured ribbon corresponding to the fleet to which she has been assigned. The ribbon shall be fixed to the top of her mast. Ribbons shall be available from the beachmaster's caravan.

3. CAMERAS AND ELECTRONIC EQUIPMENT

- 3.1** Boats may be required to carry cameras, sound equipment or positioning equipment as specified by the organizing authority.

4. NOTICE TO COMPETITORS

- 4.1 Notice to competitors will be posted on the official notice board located in the clubhouse.

5. CHANGES TO SAILING INSTRUCTIONS

- 5.1 Any change to the sailing instructions will be posted at least two hours before the advertised start time of the race/s on the day it will take effect, except that any change to the schedule of races will be posted by 20.00 on the day before it will take effect. Reassignment of fleets to racing areas will be posted before flag D is displayed.

6. SIGNALS MADE ASHORE

- 6.1 Signals made ashore will be displayed on the club signals mast. Signals displayed over a fleet flag apply to that fleet only.
- 6.2 When flag AP is displayed ashore Race Signal AP is changed as follows:
(a) Except when racing is held in Chichester Harbour '1 minute' is replaced with 'not less than 60 minutes'.
(b) When racing is held in Chichester Harbour '1 minute' is replaced with 'not less than 30 minutes'.
- 6.3 No boat shall leave the shore until its fleet flag (SI 9) is displayed under Flag D, with a sound signal. The warning signal will be made not less than 60 minutes after flag D is displayed. Competitors may tally out (see SI 20.1) before their fleet flag is displayed.
- 6.4 Flag H displayed with the fleet flag means racing will be held in Chichester Harbour.

7. QUALIFYING SERIES AND FINAL SERIES

- 7.1 The World Championship will consist of qualifying series and final series as described in Attachment C.
- 7.2 The Ladies World Championship will consist of a single race series.

8. SCHEDULE OF RACES

- 8.1 Racing is scheduled as follows:

Day 3 July 18	Practice Race: warning signal	12.55
Day 3 July 18	Opening ceremony	18.00
Day 4 July 19	Qualifying series- World, Ladies World races	10.55
Day 5 July 20	Qualifying series- World, Ladies World races	10.55
Day 6 July 21	Francis MOUVET World Team Championship	
Day 7 July 22	Qualifying/Final series- World, Ladies World races	10.55
Day 8 July 23	Qualifying/Final series- World, Ladies World races	10.55
Day 9 July 24	Qualifying/Final series- World, Ladies World races	10.55
Day 10 July 25	Qualifying/final series- World, Ladies World races	10.55
Day 10 July 25	Prize Giving and Closing Ceremony.	

8.2 The numbers of races scheduled are as follows:

- a. World Championship - Qualifying series: 6 races.
Final series: 12 races, (including the race No.1 as defined in instruction 19.2.b and in Attachment C.)
- b. Ladies World Championship - Final series: 12 races.

8.3 It is intended that no more than three races will be sailed each day.

8.4 When more than one race will be held on the same day, the warning signal for each succeeding race will be made as soon as practicable. To alert boats that another race or sequence of races will begin soon, the postponement signal AP will be displayed for at least four minutes before a warning signal is displayed.

8.5 On the last day of the regatta no warning signal will be made after 15.00.

9. FLEET FLAGS

9.1 World Championship qualifying groups will use coloured flags (See Attachment C)

- a. Qualifying series : Fleet A - Yellow.
Fleet B - Green.
Fleet C - Red.
Fleet D - Blue.
- b. Final series: Gold fleet- Yellow Flag.
Silver fleet – Blue Flag.

9.2 Ladies World Championship:
Final series: International 420 Class Flag.

10. RACING AREAS

10.1 The racing areas will include Hayling Bay and Chichester Harbour

10.2 Attachment A shows the intended location of racing area in Hayling Bay.

11. THE COURSES

11.1 The diagrams in Attachment B show the courses, including the course signal, the order in which marks are to be passed, and the side on which each mark is to be left.

11.2

At the warning signal, numeral pennant N°1 or 2 will hoisted to indicate the course to be sailed:

- | | |
|---------------------|----------------------|
| Numeral pennant N°1 | Trapezoid Outer Loop |
| Numeral pennant N°2 | Trapezoid Inner Loop |

11.3 No later than the warning signal, the race committee signal boat will display the approximate compass bearing from the start to Mark 1.

11.4 When there is a gate, boats shall sail between the gate marks from the direction of the previous mark and round either gate mark.

12. MARKS

- 12.1** Marks 1, 2, 3S, 3P, 4S, 4P and 5 will be: Yellow inflatable buoys.
- 12.2** New marks, as provided in instruction 14.1 will be yellow inflatable buoys.
- 12.3** The starting mark, starboard end, will be a race committee vessel (including any attached boats or buoys) and, port end, a race committee vessel (including any attached boats or buoys) or, an orange inflatable buoy.
- 12.4** The finishing marks will be a race committee vessel and a buoy with a blue flag.
- 12.5** A race committee boat signalling a change of course is a mark as provided in SI 14.3.

13. THE START

- 13.1** Races will be started by using RRS 26.
- 13.2** The starting line will be between a staff on the starboard end vessel displaying an orange flag and the port end starting mark displaying an orange flag.
- 13.3** Boats whose warning signal has not been made shall avoid the starting area.
- 13.4** A boat starting later than 3 minutes after her starting signal will be scored DNS (Did not start). This changes RRS A4.1
- 13.5** If a start using a black flag is subject to a general recall the bow numbers of the boats identified as infringing RRS 30.3 may be displayed instead of the sail numbers. This amends RRS 30.3

14. CHANGE OF THE POSITION OF THE NEXT MARK

- 14.1** To change the position of the next mark, the race committee will lay a new mark (or move the finishing line) and remove the original mark as soon as practicable. The change will be signalled before the leading boat has begun the leg, although the mark may not yet be in the new position. Any mark to be rounded after rounding the new mark may be relocated without further signalling to maintain the course configuration. When in a subsequent change, a new mark is replaced it will be replaced by the original mark.
- 14.2** RRS 33 is changed so that, instead of displaying a compass bearing, the race committee will display a green board/flag if the direction is changed to starboard or a red board/flag if the direction is changed to port.
- 14.3** Except at a gate, boats shall pass between the race committee boat signalling the change of course and the nearby mark, leaving the mark to port and the race committee boat to starboard. This changes RRS 28.1.

15. THE FINISH

- 15.1** The finishing line will be between staffs displaying blue flags at each end of the finishing line.

15.2 When the course is shortened at a gate, a race committee vessel near the gate will display flag S and boats shall finish by sailing through the gate from the direction of the previous mark. The finishing line will be between the gate marks. This changes Race Signal S.

15.3 Code flag L when displayed on a race committee vessel at the finish line, means 'It is intended that another race will be held as soon as practicable'.

16. PENALTY SYSTEM

16.1 Immediate Penalties for breaking RRS 42: RRS Appendix N will apply

16.2 A boat that has taken a penalty or retired under RRS 31.2 or 44.1 shall complete an acknowledgement form at the beachmaster's office, within the protest time limit.

17. TIME LIMITS AND TARGET TIMES

17.1 Time limit = 90 minutes.

17.2 Target time = 60 -70 minutes.

17.3 Mark 1 time limit = 30 minutes. If no boat has passed Mark 1 within the Mark 1 time limit the race will be abandoned.

17.4 Boats failing to finish within 20 minutes after the first boat sails the course and finishes will be scored DNF (Did Not Finish). This changes RRS 35 and A4.1.

18. PROTESTS AND REQUESTS FOR REDRESS

18.1 A boat that protests will inform the race committee finish boat immediately after finishing that race of her intention to lodge a protest and be sure that the race committee acknowledges the intention. If the protesting boat did not finish, she will inform any race committee boat if possible or the regatta office as soon as arrival on shore.

18.2 Protest forms are available at the race office. Protests shall be delivered there within the protest time limit.

18.3 The protest time limit is 90 minutes after the last boat has finished the last race of the day. The same protest time limit applies to all protests by the race committee, international jury and requests for redress. This changes RRS 61.3 and 62.2.

18.4 Notices will be posted within 30 minutes of the end of protest time with a hearing schedule. Protests will not be heard earlier than the time stated on the schedule. It will also inform competitors of hearings in which they are parties or named as witness. This will be the only notification in accordance with RRS 63.

18.5 Notices of protests by the race committee or international jury will be posted on the official notice board to inform boats under RRS 61.1(b).

18.6 A list of boats that, under SI 16.2, have acknowledged breaking RRS 42 or have been disqualified by the international jury will be posted before the protest time limit.

- 18.7** Breaches of instructions 2, 3, 13.3, 16.1, 20, 21.2, 24, 25, 26 and 27 will not be grounds for a protest by a boat. This changes RRS 60.1(a). Penalties for these breaches may be less than disqualification if the international jury so decides.
- 18.8** On the last day of the regatta a request for reopening a hearing shall be delivered:
- within the protest time limit if the party requesting reopening was informed of the decision on the previous day.
 - no later than 30 minutes after the party requesting reopening was informed of the decision on that day. This changes RRS 66.
- 18.9** Decisions of the international jury will be final as provided in RRS 70.4.

19. SCORING

19.1 The Low Point scoring system of Appendix A will apply.

19.2 World Championship:

19.2.1 Qualifying series:

- There will be 6 qualifying series races with one discard.
- The qualifying series results shall be converted to race scores. These race scores shall be treated in all aspects as a race score for the final series (race 1).
- The result of each round in the qualifying series will be valid when all the boats complete this round.

19.2.2 Final series:

- 2 final series races (3 results in the final series including the race 1) are required to be completed to constitute a final series.
- When less than 4 final series races (less than 5 scores in the results) are completed, the race score of each qualifying series race and each final series race, excluding each boat's worst score of the combined scores will be used to determine the final scores for the event.
- When from 5 to 8 final series races have been completed, a boat's series score will be the total of her race scores (including race 1) excluding her worst score.
- When 9 or more final series races have been completed, a boat's series score will be the total of her race scores (including race 1) excluding her two worst scores.

See also Attachment C

19.3 Ladies World Championship

- 5 races are required to be completed to constitute a series.
- When from 5 to 8 races have been completed, a boat's series score will be the total of her race scores excluding her worst score.
- When 9 or more races have been completed, a boat's series score will be the total of her race scores excluding her two worst scores.

19.4 To request correction of an alleged error in posted race or series results, a boat shall complete a scoring enquiry form available at the race office.

19.5 The scoring abbreviation for a discretionary penalty imposed under instruction 18.6 will be DPI.

19.6 When boats sail in a series in groups as provided in Attachment C, for the purposes of RRS A.4.2, the points to be scored shall be based on the number of boats sailing in each race. A boat that did not start, did not finish, retired after finishing or was disqualified will be scored points for the finishing place one more than the number of boats assigned to the two groups sailing in the race. This changes RRS A.4.2.

20. SAFETY REGULATIONS

20.1 Tallies. The requirements specified in this SI is for the safety of competitors.

- (a) The tally system to check-in and check-out competitors will be located outside the beachmaster's office, at the top of the south launching ramp (known as tally control)
- (b) Tallies comprise a pair of numbered rubber wrist bands matching the boats bow number issued at registration. Tallies shall be worn visibly, OVER clothing, on the RIGHT wrist, by both helm and crew while afloat.
- (c) Both helm and crew shall individually tally-out before racing by personally collecting their tally and individually, tally-in immediately on returning to shore after racing by returning the tally personally to tally control.
- (d) Boats whose crews fail to comply with SI 20.1 may accept an alternative penalty for a first infringement by making a donation of £10.00 to the Royal Lifeboat Institution. Otherwise the penalty will be disqualification from all races on the day concerned. Infringements will be posted on the official notice board before the protest time limit. This changes RRS63.1 and RRS A4.1

20.2 A boat that retires from a race shall notify the race committee as soon as possible.

20.3 Life jackets or other adequate personal buoyancy shall be worn by all competitors at all times while afloat. Dry suits or wet suits are not adequate personal buoyancy. Flag Y will not be displayed. This changes RRS 40 and Race Signal Y.

20.4 PROHIBITED AREA

The West Pole sands are a prohibited area (see chart in Attachment A). The sands, which extend from Eastoke Point at the western side of the harbour entrance out to the Chichester Bar Beacon, are shallow and a difficult area for safety boats to operate in. All boats shall pass the Chichester Bar Beacon to starboard on the way out to the racing area, and, on returning, shall leave the Beacon to port. Failure to observe this instruction will lead to a report to the international jury

20.5 Instructions from Official Safety boats: Competitors shall obey instruction from official safety boats. Failure to do so will result in a report to the international jury.

21. REPLACEMENT OF CREW OR EQUIPMENT

21.1 Substitution of competitors will not be allowed without prior written approval of the international jury.

21.2 Substitution of damaged or lost equipment will not be allowed unless approved by the race committee. Requests for substitution shall be made to the committee at the first reasonable opportunity.

22. EQUIPMENT AND MEASUREMENT CHECKS

22.1 A boat or equipment may be inspected at any time for compliance with the class rules and sailing instructions. On the water, a boat can be instructed by a race committee measurer to proceed immediately to a designated area for inspection.

23. OFFICIAL BOATS

23.1 Official boats will be identified as follows:

- | | |
|-----------------------|-------------------------|
| (a) Jury boat | Jury Flag |
| (b) Safety boats | Orange Flag with number |
| (c) Mark laying boats | Yellow flag |

24. CHARTER BOATS

24.1 According to the Appendix G RRS G3, a boat chartered may carry a sail number in contravention of the International 420 Class Rules.

25. SUPPORT BOATS

25.1 Team leaders, coaches and other support personnel shall remain more than 100metres outside areas where boats are racing from the time of the preparatory signal for the first fleet start until all boats have finished or the race committee signals a postponement, general recall or abandonment.

25.2 The coach boats shall display, for their identification a minimum 30 x 20 cm. white flag with the national letters of their respective country while afloat.

26. TRASH DISPOSAL

26.1 Boats shall not put trash in the water. Trash may be placed aboard support and official boats.

27. BERTHING

27.1 Boats shall be kept in their assigned places in the boat park.

28. RADIO COMMUNICATION

28.1 A boat shall neither make radio transmissions while racing nor receive radio communications not available to all boats. This restriction also applies to mobile/cellular telephones.

29. PRIZES

29.1 Prizes will be given in accordance to those defined in the Notice of Race.

30. DISCLAIMER OF LIABILITY

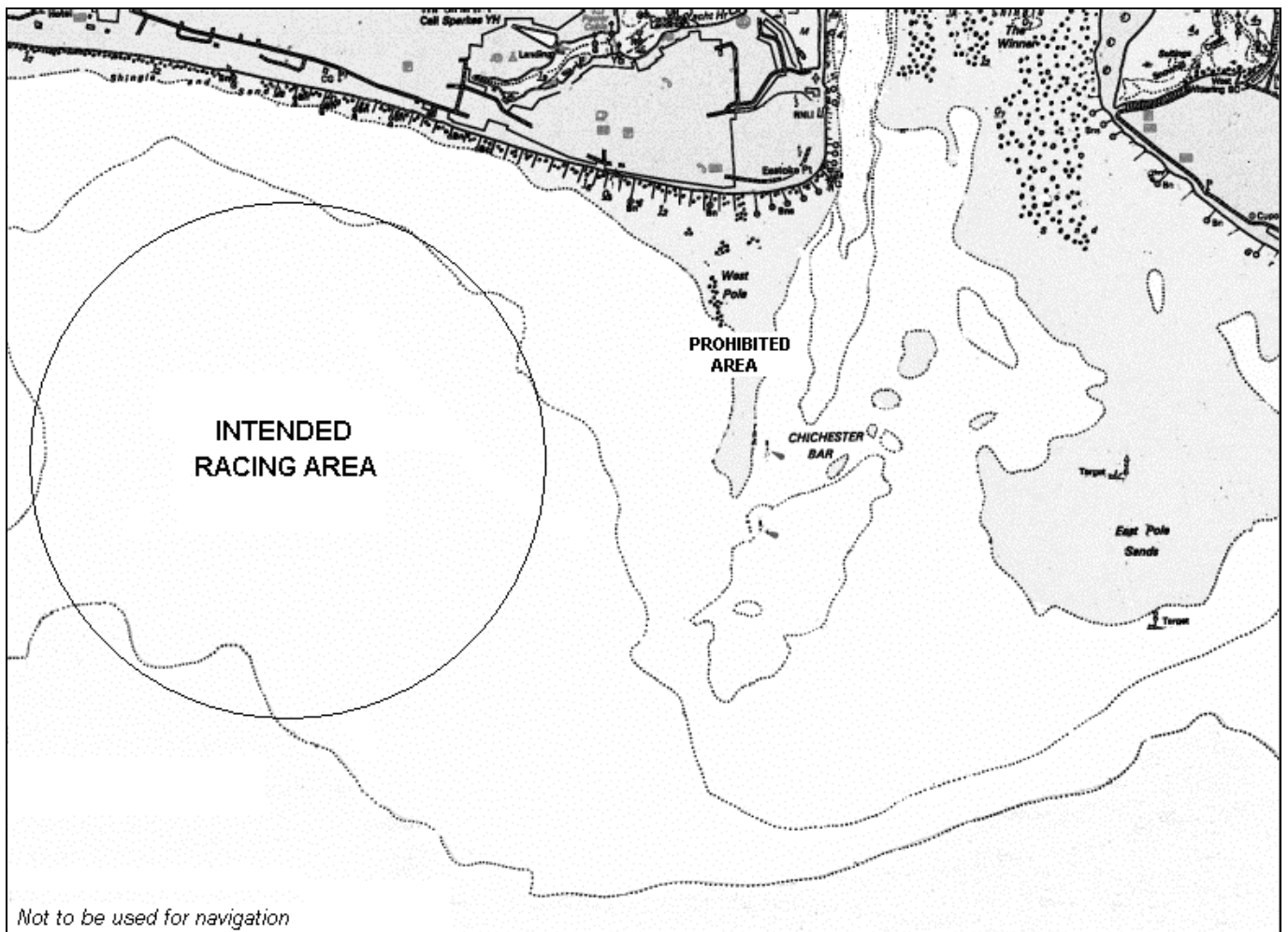
30.1 Competitors participate in the regatta entirely at their own risk. See rule 4: Decision to race. The organizing authority will not accept any liability for material damage or personal injury or death sustained in conjunction with or prior to, during, or after the regatta.

31. INSURANCE

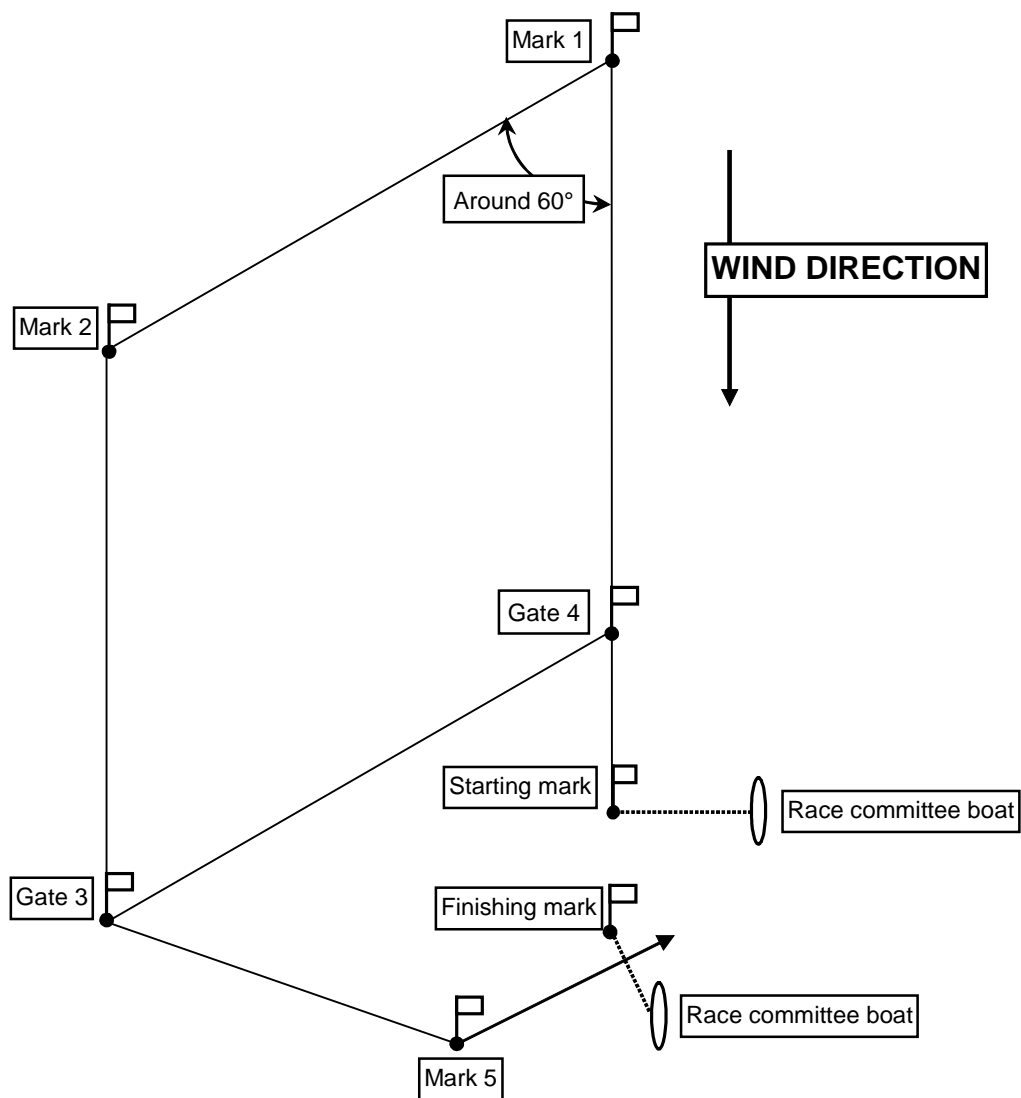
31.1 Boats must be adequately insured including insurance against third party claims of at least £2,000,000 or the equivalent in other currencies.

Each participant warrants the suitability of his or her boat for the event.

ATTACHMENT A RACING AREA



ATTACHMENT B – DIAGRAM OF THE COURSE



Mark 3 and 4 shall be gates

Outer loop course

Starting line → mark 1 → mark 2 → gate 3 → mark 2 → gate 3 → mark 5 → Finishing line

Each mark left to port except gates

Inner loop course

Starting line → mark 1 → gate 4 → mark 1 → mark 2 → gate 3 → mark 5 → Finishing line

Each mark left to port except gates

ATTACHMENT C - QUALIFYING SERIES AND FINAL SERIES

QUALIFYING SERIES

Boats will be assigned to one of four approximately equal size groups, A (Yellow), B (Green), C (Red), and D (Blue), as follows:

Competing countries will be listed in alphabetical order of their ISAF national letters. Each country's boats will be sorted by draw, to produce a full list of boats. For example:

ARG 1 ARG 2

AUS 1 AUS 2 AUS 3 AUS 4 AUS 5 AUS 6 AUS 7

AUT 1 AUT 2 AUT 3 AUT 4

BEL 1 BEL 2 BEL 3

etc.

The first boat in the list is assigned to A, the second to B, the third to C, the fourth to D, the fifth to A, and so on. The above example would split as follows:

A (Yellow)	B (Green)	C (Red)	D (Blue)
-------------------	------------------	----------------	-----------------

ARG 1	ARG 2	AUS 1	AUS 2
-------	-------	-------	-------

AUS 3	AUS 4	AUS 5	AUS 6
-------	-------	-------	-------

AUS 7	AUT 1	AUT 2	AUT 3
-------	-------	-------	-------

AUT 4	BEL 1	BEL 2	BEL 3
-------	-------	-------	-------

A list of boats in each group will be available at registration.

There will be 6 qualifying races. Groups will race with each other in rotation as follows:

Race	First Flight	Second Flight
1	Yellow & Green	Red & Blue
2	Yellow & Red	Green & Blue
3	Yellow & Blue	Green & Red
4	Yellow & Green	Red & Blue
5	Yellow & Red	Green & Blue
6	Yellow & Blue	Green & Red

FINAL SERIES

After the qualifying series boats will be assigned to one of two approximately equal sized fleets, Gold and Silver. Boats with the best qualifying-series scores will race all final series races in the Gold fleet, the remainder will race in the Silver fleet. If there is an odd number of boats then the additional boat will sail in the Gold Fleet. If ties are not broken between boats at the boundary between Gold and Silver and one boat should have sailed in the Gold Fleet, then those tied boats will all sail in the Gold fleet. A list of boats in each fleet will be posted on the official notice board at least 2 hours before the scheduled start time for the first race of the final series.

Any recalculation of qualifying series scores after boats have been assigned to final series fleets will not affect the assignments except that a redress decision may promote a boat to the Gold fleet.