

**2004  
INTERNATIONAL 420 CLASS  
EUROPEAN CHAMPIONSHIP &  
LADIES EUROPEAN CHAMPIONSHIP**

**SAILING CLUB “USKOK”  
ZADAR – CROATIA  
23-30 July 2004**

## **FINAL NOTICE OF RACE**

### **1 PRESENTATION**

The **2004** International 420 European & Ladies Championship, will be held at **Zadar** in Croatia from the July **23<sup>rd</sup>** 2004 to the July **30<sup>th</sup>** 2004.

The races will be sailed in the waters of **Zadar**. (See appendix **A**)

### **2. ORGANISING COMMITTEE**

The championship is organised by Sailing Club “**Uskok**”, the Croatian 420 class association and the Croatian Sailing Federation, in conjunction with the International 420 Class Association.

### **3 RULES**

The event will be governed by:

- ◆ The “Rules” as defined in the ISAF Racing Rules of Sailing
- ◆ The ISAF Equipment Racing Rules of Sailing
- ◆ The Measurement Instructions

### **4. LANGUAGE DURING THE EVENTS**

The official language, during these events, is English. In case of conflict between different texts the English text shall prevail.

### **5. ADVERTISING AND BOW NUMBER**

The European & Ladies Championship is classified category **C**, in accordance to the ISAF advertising code.

Boats may be required to display on each side of the hull:

- ◆ A bow number on the forward **600** mm of the hull.
- ◆ Advertising of the event sponsor.

## **6. EVENTS FORMAT**

### **6.1 European Championship**

The European Championship shall be competed with:

- ♦ Qualifying series to share the fleet in two fleets (Gold and Silver)
- ♦ Final series in two separate fleets (Gold and Silver).

### **6.2 Ladies European Championship**

The Ladies Championship shall be competed in one separated fleet.

## **7. EVENT SCHEDULE**

Day 1 July 23 <sup>rd</sup>	Registration and measurement	0900.h /1900.h
Day 1 July 23 <sup>rd</sup>	Opening ceremony with Cocktail Party	
Day 2 July 24 <sup>th</sup>	Registration and measurement	0900.h /1900.h
Day 2 July 24 <sup>th</sup>	Team leaders meeting with the Major of the town	1200 h
Day 2 July 24 <sup>th</sup>	Practice Race : warning signal	1500 h
Day 3 July 25 <sup>th</sup>	Qualifying series-European, Final-Ladies	1200 h
Day 4 July 26 <sup>th</sup>	Qualifying series-European, Final-Ladies	1200 h
Day 5 July 27 <sup>th</sup>	Qualifying or Final series-European, Final-Ladies	1200 h
Day 6 July 28 <sup>th</sup>	Qualifying or Final series-European, Final-Ladies	1200 h
Day 7 July 29 <sup>th</sup>	Qualifying or Final series-European, Final-Ladies	1200 h
Day 8 July 30 <sup>th</sup>	Qualifying or Final series-European, Final-Ladies Prize Giving and Closing Ceremony	1200 h 2030 h

## **8 ELIGIBILITY**

The championship is only open to International **420** dinghies.

The ISAF competitors eligibility code (RRS Appendix 2) shall apply. Each competitor shall be a member of his National Authority if one exists. Each competitor shall be entered by his National **420** Class Association or by his Federation/National authority if such an Association does not exist.

## **9. ENTRIES AND RESTRICTIONS**

### **9.1 European Championship**

Entries for European Championship will be limited in accordance to the International 420 Class Association Guidelines: 7 boats for each country and 14 boats for the hosting country.

Only men and mixed crews are authorised to enter the European Championship.

### **9.2 Ladies European Championship**

Entries for the Ladies Championship will be limited in accordance to the International 420 Class Association Guidelines: 7 boats for each country and 14 boats for the hosting country.

Only ladies crews are authorised to enter the Ladies European Championship.

## **10. REGISTRATION**

Preliminary and final entry forms shall be sent to:

**Gail Nuttall**

*23 Crichel Mount Road, Poole, Dorset, BH14 8LT, GREAT BRITAIN*

*Tel: + 44 1202 707 231 Fax: + 44 1202 709 819*

*E-mail: [gail@brackenhill.demon.co.uk](mailto:gail@brackenhill.demon.co.uk)*

before March **23<sup>rd</sup>** 2004 for the Preliminary Entry Forms (see appendix **B**)

and before June **23<sup>rd</sup>** 2004 for the Final Entry Forms (see appendix **C**)

You must send a copy of your bank transfer, to identify your payment, with your entry.

Entry fee in the European or Ladies European championship per boat. **250.00 EURO**.

Entry fees shall be paid in EURO by swift to:

**INTERNATIONAL 420 CLASS ASSOCIATION**

ACCOUNT N°: 210 - 0467 - 180 - 80

BANK : FORTIS BANQUE

BANK BRANCH : AGENCE DU FORT JACO

IBAN. BE47 2100 4671 8080

SWIFT. GEBABEBB

**BRUSSELS**

**BELGIUM**

before June **23<sup>rd</sup>** 2004.

**Each entry and fee not received by the June 23 may not be accepted and shall be subject to a supplementary fee of 50 EURO.**

## **11. DISCLAIMER**

All the teams taking part in the event do so at their own risk and responsibility. The Organising Committee and anyone associated with the organising of the event, disclaim any and every responsibility whatsoever for loss, damage, injury or inconvenience that might occur to persons and goods, both ashore and at sea as a consequence of participation in the races covered by this notice of race.

Attention is drawn to the ISAF Fundamental Rule 4 which states:

"The responsibility for a boat's decision to participate in a race or to continue racing is hers alone".

## **12. MEASUREMENT**

All boats shall be measured before racing on the days mentioned on this notice of race.

Each boat shall have a valid Measurement certificate which must be produced at registration.

Random checks can be made at any time during the championships.

### **13. SAILING INSTRUCTIONS and MEASUREMENT INSTRUCTIONS**

The measurement instructions will be available for each competitor and Team Leader at the race office, between 9.00 a.m. and 7.00 p.m. The sailing instructions will be available, at the same office, for each competitor and Team Leader after the final registration.

### **14. LADIES CREWS IDENTIFICATION**

Each ladies crew shall have a square **25 cm** red diamond mark on the top of the head sail for identification.

### **15. SAFETY REGULATIONS**

Competitors shall wear life-jacket or other adequate personal buoyancy at all times when afloat.

Wet suits and dry suits are not adequate personal buoyancy

### **16. DRUG TESTING**

Competitors are required to comply with the **RRS 5** and **RRS Appendix 3** which bans the use of drugs.

Drugs testing may take place during the events.

### **17. COURSES**

The format of the course shall be a trapezium. (see appendix **D**)

The target time of a race shall be around 60 minutes.

### **18. JURY, PROTESTS and PENALTIES FOR BREAKING RULES OF PART 2**

An International Jury shall be appointed, in accordance to **RRS Appendix M**, and its decisions shall be final and not subject to appeal (**RRS 70.4**).

### **19. SCORING:**

The low point scoring system of appendix **A** shall apply (RRS Appendix **A**).

#### **19.1 European Championship**

- ♦ **Qualifying series:** There will be **6** races with one discard. At the end of the qualifying series, results shall be converted to race scores. These race scores shall be treated in all aspects as a race score for the final series (race No. **0**).
- ♦ **Final series :** There will be **11** races plus the Qualifying series result (total **12** scores in the Results.)
  - If less than **4** final series races are completed (less than **5** scores in the results), the Qualifying races results (without race score No. **0**) will be taken in account in addition to the final series races competed, with one race discarded.
  - If **4** to **7** Final series races are sailed (**5** to **8** scores in the results) there will be one discard.

- If **8 to 11** Final series races are sailed (**9-12** scores in the results) there will be two discards

A minimum of **2** final races completed (**3** results in final series including the race No. **0**) is required to award the titles of European Champion.

No more than **three** races can be competed each day.

## **19.2 Ladies European Championship**

The number of races will be **12**.

A minimum of **5** races completed is required to award the Championship.

If **5 to 8** races are sailed there will be **one** discard.

If **9 to 12** races are sailed there will be **two** discards.

No more than **three** races can be competed each day.

## **20. PRIZES**

The first three crews in Gold, Silver and Ladies fleets ranking lists shall be given a trophy. The first three European crews in Gold and Ladies shall receive a gold, silver and bronze Medal.

At least, the first 20% crews of the Gold and Ladies ranking list shall be given a souvenir of the event.

The prizes are given to each member of a crew.

## **21. TITLES**

Non European countries can compete but the titles shall be awarded only to European crews.

The title of International 420 Class European Champion will be awarded to the first male or mixed European team in the Gold fleet ranking list of the European Championship. If there are no European men/mixed team in the Gold fleet, the title of International 420 Class European Champion will be awarded to the first male or mixed European team in the Silver fleet ranking list of the European Championship.

The title of International 420 Class Ladies European Champion will be awarded to the first Ladies European team in the Ladies European Championship.

## **22. ANTHEM**

For the prize giving ceremony, each team leader shall bring a recording of his national anthem.

## **23. NATIONAL FLAG**

Each coach boat of a national team shall fly a **20 x 30** cm flag displaying their national

Code letters, black on white.

## **24. INSURANCE**

Each competitor shall produce on registration, an evidence of valid third party insurance with a minimum cover of **1.500.000** EURO or the equivalent in other currencies.

Each participant warrants the suitability of his or her boat for the event.

## **25. CHARTER BOATS**

Charter boats are available from Nautivela. Reservations should be made with the:

Sailing Club «Uskok»  
Tel +385 23 331076  
Fax +385 23 331076  
web: [www.uskok.biz.hr](http://www.uskok.biz.hr)  
E-mail: [ec420@uskok.biz.hr](mailto:ec420@uskok.biz.hr)

## **1 Weather information: Summer weather conditions**

The average temperature in summer is 25°C.

The sea average temperature is 22°C

Expected wind speed during event period is 8 to 16 knots.

The most characteristic is thermal wind Maestral (about 12 knots) blowing from NW.

Summer in Zadar is mostly dry.

## **2 Racing area:**

Difference between minimum and maximum sea level is 0,5 meters.

Currents are up to 1 Nm, from NW or SE through the channel.

Channel depth is about 40 meters.

## **3 Accommodation:**

**The official Agency for the championship will be:**

**Terra**

Matije Gupca 2a

23000 Zadar, Croatia

Tel - + 385 23 337 294 / Fax - + 385 23 337 295

web: [www.terra-hr.com](http://www.terra-hr.com)

e-mail: [terra@zd.hinet.hr](mailto:terra@zd.hinet.hr)

**For reservations please contact before 1<sup>st</sup> April 2004.**

## **4 Chandlers and repairs**

There will be a chandler and a sail maker on the site for small repairs.

## **5 General Information**

General information (travelling, how to reach us, tourist guide, etc) can be found on our website <http://www.uskok.biz.hr>.

## **6 Organising committee**

**Contact person:** Mrs Nina Fain

**Address:** Obala kneza Trpimira bb

**Post code:** 23000

**City:** Zadar

**State:** Croatia

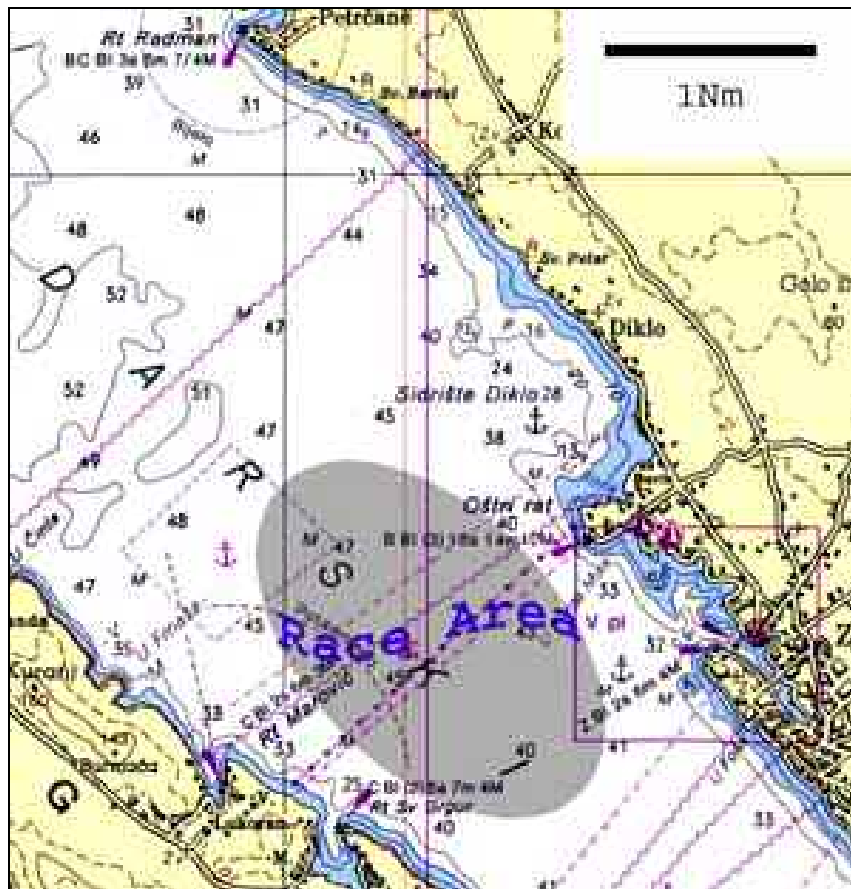
**Telephone:** +385 23 331076 or +385 23 333888

**Fax:** +385 23 331076

**Web:** [www.uskok.biz.hr](http://www.uskok.biz.hr) , **E-mail:** [ec420@biz.hr](mailto:ec420@biz.hr)

## Appendix A

### RACING AREA





Appendix B

**Zadar – Croatia, July 23<sup>rd</sup> – 30<sup>th</sup> 2004.**

**International 420 Class European&Ladies European Championship**

**PRELIMINARY ENTRY FORM**

PLEASE FULFIL IN CAPITAL LETTERS

COUNTRY	_____
REPRESENTED BY :	<b>Name :</b> _____ <b>First name :</b> _____ <b>Position :</b> _____ <b>Address :</b> _____ _____ _____ <b>Telephone/Fax :</b> _____ <b>E-mail :</b> _____

WILL ENTER TO 420 CLASS EUROPEAN CHAMPIONSHIP (MAXIMUM 7 or 14 FOR HOSTING COUNTRY) :	_____ <b>BOATS</b>
WILL ENTER TO 420 CLASS LADIES EUROPEAN CHAMPIONSHIP (MAXIMUM 7 or 14 FOR HOSTING COUNTRY) :	_____ <b>BOATS</b>

DATE:

SIGNATURE:

Post Entry forms before March 23<sup>rd</sup> 2004 to :

**Gail Nuttall**

23 Crichel Mount Road, Poole, Dorset, BH14 8LT, GREAT BRITAIN

Tel: + 44 1202 707 231 Fax: + 44 1202 709 819

E-mail : [gail@brackenhill.demon.co.uk](mailto:gail@brackenhill.demon.co.uk)

Appendix C

**Zadar – Croatia, July 23<sup>rd</sup> – 30<sup>th</sup> 2004**

**International 420 Class European&Ladies European Championship**

**FINAL ENTRY FORM**

PLEASE FULFIL IN CAPITAL LETTERS

COUNTRY			
SAIL NUMBER			
HELMSMAN SURNAME		FIRST NAME	
DATE OF BIRTH		SEX (M/F) :	
HELMSMAN ADDRESS			
PHONE -FAX -E-MAIL			
CREW SURNAME		FIRST NAME	
DATE OF BIRTH		SEX (M/F) :	
CREW ADDRESS			
PHONE -FAX -E-MAIL			

We agree to be bound by the Racing Rules of Sailing and by all other rules that govern this event.

We declare that we will participate at our own risk and that we are solely responsible for deciding whether or not to start or continue racing.

DATE: \_\_\_\_\_

SIGNATURE OF HELMSMAN:

SIGNATURE OF CREW:

APPROVED BY: \_\_\_\_\_ ON THE BEHALF OF THE NATIONAL 420 CLASS

SIGNATURE OF REPRESENTATIVE

Post Entry forms before June 23<sup>rd</sup> 2004 to :

**Gail Nuttall**

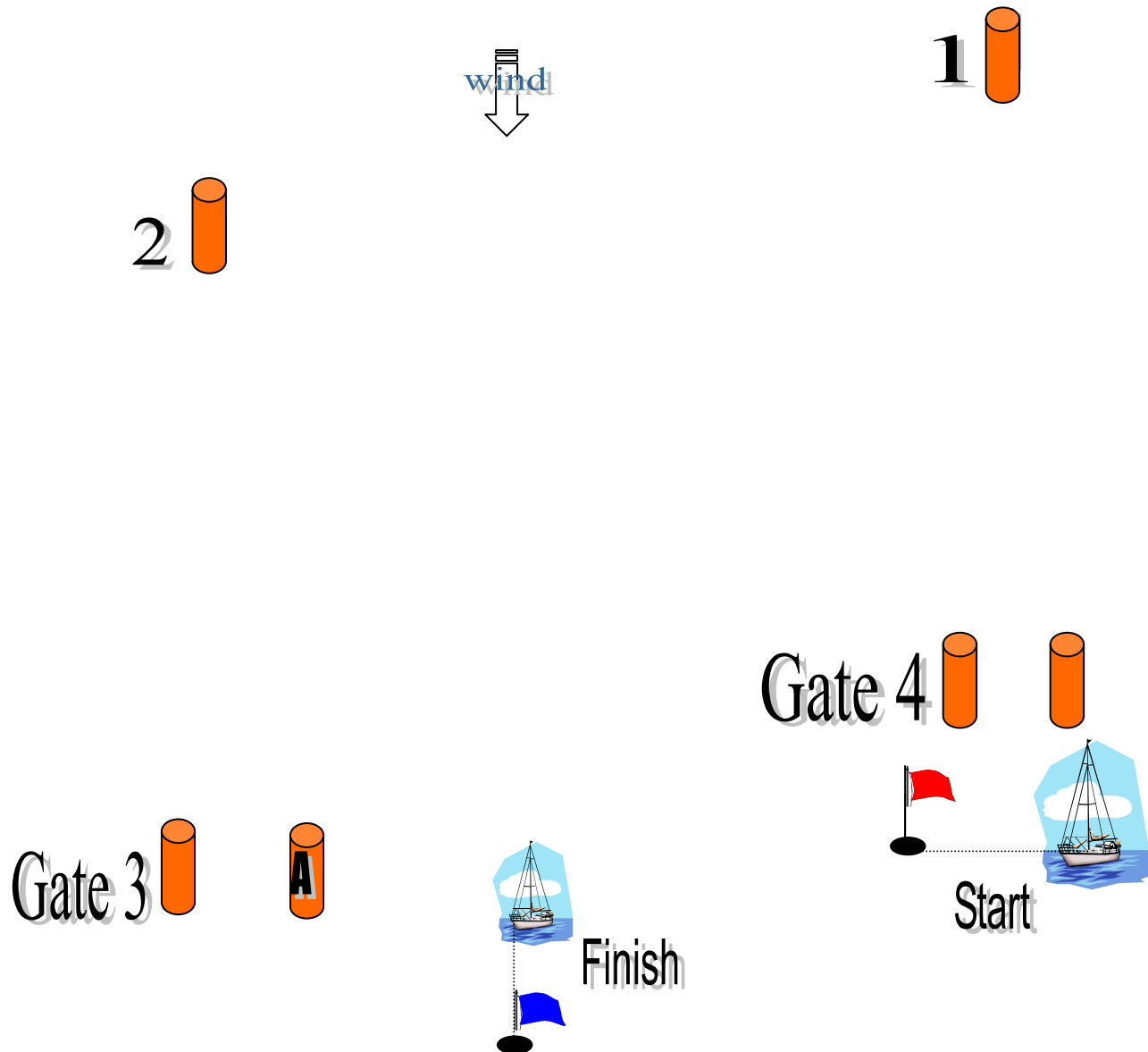
23 Crichel Mount Road, Poole, Dorset, BH14 8LT, GREAT BRITAIN

Tel: + 44 1202 707 231 Fax: + 44 1202 709 819

E-mail : [gail@brackenhill.demon.co.uk](mailto:gail@brackenhill.demon.co.uk)

## Appendix D

### Int. 420 Course



**INNER;** Start-1-Gate 4-1-2-3A-Finish.

**OUTER;**Start-1-2-Gate 3-2-3A-Finish.