

2003
INTERNATIONAL 420 CLASS WORLD CHAMPIONSHIP
INTERNATIONAL 420 CLASS LADIES' WORLD CHAMPIONSHIP
INTERNATIONAL 420 CLASS FRANCIS MOUVET
TEAM RACING CHAMPIONSHIP

HAYLING ISLAND SAILING CLUB
HAYLING ISLAND, ENGLAND
16 to 25 JULY 2003

FINAL NOTICE OF RACE

1. PRESENTATION

The 2003 International 420 World Championship, International 420 Ladies' World Championship, and International 420 FRANCIS MOUVET Team Racing Championship will be held at Hayling Island Sailing Club, Hampshire, England from the 16th to the 25th July 2003.

The races will be sailed in the Hayling Bay. (See appendix A)

2. ORGANISING AUTHORITY

The championship is organised by Hayling Island Sailing Club, the UK International 420 Class Association and the Royal Yachting Association, in conjunction with the International 420 Class Association.

3. RULES

The event will be governed by:

- ◆ The "Rules" as defined in the ISAF Racing Rules of Sailing, excluding the prescriptions of any National Authority
- ◆ The ISAF Equipment Racing Rules of Sailing
- ◆ The Measurement Instructions

This Notice of Race replaces the Preliminary Notice published July 2002. If there is conflict with the Sailing Instructions, the Sailing Instructions shall prevail.

LOCAL RULES.

No tents, caravans or camper vans may be used on the Hayling Island Club site, and no vehicles are to be used for overnight sleeping. Competitors are subject to the bye-laws of Hayling Island Sailing Club.

4. LANGUAGE DURING THE EVENTS

The official language, during these events, is English. In case of conflict between different texts the English text shall prevail.

5. ADVERTISING AND BOW NUMBERS

The World Championship, Ladies' World Championship and The Francis MOUVET Team Racing Championships are classified category C, in accordance to the ISAF advertising code.

All boats will be required to display on each side of the hull:

- ♦ A bow number on the forward 600 mm of the hull

Bow numbers will be available, with instructions for their application, at registration.

- ♦ Advertising of the event sponsor

6. EVENTS FORMAT

6.1. WORLD CHAMPIONSHIP

The World Championship shall be competed with:

- ♦ Qualifying series to share the fleet in two fleets (Gold and Silver)
- ♦ Final series in two separate fleets (Gold and Silver)

6.2. LADIES WORLD CHAMPIONSHIP

The Ladies World Championship shall be competed in one separated fleet.

6.3. FRANCIS MOUVET TEAM RACING CHAMPIONSHIP

The International 420 Class Francis Mouvet Team Racing Championship will be a tournament competed, during the races, by a National Team of two or three boats against another National Team of two or three boats.

7. EVENTS SCHEDULE

Day 1 July 16 th	Registration and measurement	09.00 17.00
Day 2 July 17 th	Registration and measurement	09.00 17.00
Day 3 July 18 th	Registration and measurement	09.00 12.00
Day 3 July 18 th	Practice Race: warning signal	12.55
Day 3 July 18 th	Opening ceremony	
Day 4 July 19 th	Qualifying series- World, Ladies' World races	10.55
Day 5 July 20 th	Qualifying series- World, Ladies' World races	10.55
Day 6 July 21 st	Francis MOUVET Team racing Championship	
Day 7 July 22 nd	Qualifying/Final series- World, Ladies' World races	10.55
Day 8 July 23 rd	Qualifying/Final series- World, Ladies' World races	10.55
Day 9 July 24 th	Qualifying/Final series- World, Ladies' World races	10.55
Day 10 July 25 th	Qualifying/Final series- World, Ladies' World races Prize Giving and Closing Ceremony.	10.55

8. ELIGIBILITY

The championships are only open to International 420 dinghies.

The ISAF competitors eligibility code (RRS Appendix 2) shall apply. Each competitor shall be a member of his National Authority if exists. Each competitor shall be entered by his National 420 Class Association or if not by his Federation/National Authority.

9. ENTRIES AND RESTRICTIONS

9.1. WORLD CHAMPIONSHIP

Entries for the World Championship will be limited in accordance to the International 420 Class Association Guidelines: 7 boats for each country and 14 boats for the hosting country in each championship.

The entitled crew of the International 420 World Championship is authorised to defend his title, in addition to the teams defined above. This shall apply only if the crew is still the same (crew and helmsman).

Only men and mixed crews are authorised to enter the World Championship.

9.2. LADIES' WORLD CHAMPIONSHIP

Entries for the Ladies' World Championship will be limited in accordance to the International 420 Class Association Guidelines: 7 boats for each country and 14 boats for the hosting country in each championship.

The entitled crew of the International 420 Ladies' World Championship is authorised to defend her title, in addition to the teams defined above. This shall apply only if the crew is still the same (crew and helmsman).

Only female crews are authorised to enter the Ladies' World Championship.

9.3. FRANCIS MOUVET TEAM RACING CHAMPIONSHIP

The championship is only open to crews and boats competing the World or Ladies' World Championships.

A maximum of 12 national teams shall be selected in accordance to the International 420 Class Association Guidelines. The format of the International 420 Class Francis Mouvet Team Racing Championship shall be in accordance to the International 420 Class Association Guidelines.

10. REGISTRATION

Preliminary and final entry forms shall be sent to:

Gail Nuttall
23 CRICHEL MOUNT ROAD,
POOLE, DORSET, BH14 8LT ENGLAND
Tel + 44 1202 707231 Fax + 44 1202 709819
gail@brackenhill.demon.co.uk

before 16 MARCH 2003 for the Preliminary Entry Forms (see appendix B)

before 16 JUNE 2003 for the Final Entry Forms (see appendix C)

Entry fee in the World or Ladies' World championship per boat.....**250.00 EURO**.

There is no entry fee for the Francis MOUVET TROPHY

Entry fees shall be paid in EURO by swift to:

INTERNATIONAL 420 CLASS ASSOCIATION

ACCOUNT N°: 210 - 0467 - 180 - 80

BANK : FORTIS BANQUE

BANK BRANCH : AGENCE DU FORT JACO

BRUSSELS

BELGIUM

before 16 JUNE 2003.

Each entry and fee not received by the 16 June 2003 may not be accepted and shall be subject to a supplementary fee of 50 EURO.

All competitors who are under 18 year of age are minors in English law. By signing the entry forms, team managers shall accept responsibility '*in loco parentis*' for these competitors whilst at the championship venue.

11. DISCLAIMER

Competitors are entirely responsible for their own safety, whether afloat or ashore, and nothing reduces this responsibility. It is for competitors to decide whether their boat is fit to sail in the conditions in which it will find itself. By launching or going to sea competitors confirm the boat is fit for those conditions and they are competent to sail and compete in them. Nothing done by the organisers can reduce the responsibility of the owner and /or competitors, nor will it make the organiser responsible for any loss, damage, death or personal injury, however it may have occurred, as a result of the boat taking part in the racing. The organisers encompass every one helping to run the event. The provision of patrol boats does not relieve the owners and competitors of their responsibilities.

Attention is drawn to the ISAF Fundamental Rule 4 which states:

"The responsibility for a boat's decision to participate in a race or to continue racing is hers alone".

12. MEASUREMENT

All boats shall be measured before racing on the days mentioned on this notice of race.

Each boat shall have a valid Measurement certificate, which must be produced at registration.

Random checks can be made at any time during the championships.

13. SAILING INSTRUCTIONS and MEASUREMENT INSTRUCTIONS

The measurement instructions will be available for each competitor and Team Leader at the race office, between 9.00 a.m. and 5.00 p.m. The sailing instructions will be available, at the same office, for each competitor and Team Leader after the final registration.

These may be available in advance from the championship website, <http://www.420worlds.org/>

14. LADIES CREWS IDENTIFICATION

Boats competing in the Ladies' World Championship, and ladies' boats in the Francis Mouvet Team Racing Championship, will be issued at registration with red, 25cm self-adhesive squares. These shall be displayed while racing on both sides of the mainsail, above the top batten.

15. SAFETY REGULATIONS

Competitors shall wear life-jackets or other adequate personal buoyancy at all times when afloat.

Wet suits and dry suits are not adequate personal buoyancy.

16. DRUG TESTING

Competitors are required to comply with the RRS 5 and RRS Appendix 3, which bans the use of drugs.

Drugs testing may take place during the events.

17. COURSES

17.1 WORLD CHAMPIONSHIP AND LADIES WORLD CHAMPIONSHIP.

The format of the course shall be a trapezium. (see appendix D)

The target time of a race shall be around 60 to 75 minutes.

The World Championship and the Ladies' World Championship shall be competed on the same course but with separate starts.

17.2 FRANCIS MOUVET TEAM RACING CHAMPIONSHIP

The format of the course will be a trapezium. (see appendix E)

The duration of the races shall be around 10 to 15 minutes.

18. JURY, PROTESTS and PENALTIES FOR BREAKING RULES OF PART 2

An International Jury shall be appointed, in accordance to RRS Appendix M, and its decisions will be final and not subject to appeal (RRS 70.4).

19. SCORING WORLD AND LADIES WORLD CHAMPIONSHIPS :

The low point scoring system of RRS appendix A will be used.

19.1 WORLD CHAMPIONSHIP

- ♦ **Qualifying series:** There will be 6 races with one discard. At the end of the qualifying series, results shall be converted to race scores. These race scores shall be treated in all aspects as a race score for the final series. (race 1)
- ♦ **Final series:** There will be 11 races plus the Qualifying series result. (total 12 scores in the Results)
 - If less than 4 final series races are completed (less than 5 scores in the results), the Qualifying races results (without race score n°1) will be taken in account in addition to the final series races competed, with one race discarded.

- If 4 to 7 Final series races are sailed (5 to 8 scores in the results) there will be one discard.
- If 8 to 11 Final series races are sailed (9-12 scores in the results) there will be two discards.

A minimum of 2 final series races completed (3 scores in the results) is required to award the title of World Champion.

No more than three races will be sailed each day.

19.2 LADIES' WORLD

The number of races scheduled will be 12.

A minimum of 5 races is required to be completed to award the Championship.

If 5 to 8 races are sailed there will be one discard.

If 9 to 12 races are sailed there will be two discards.

No more than three races will be sailed each day.

20. PRIZES

The first three crews in Gold, Silver and Ladies' fleets ranking lists shall be given a trophy.

At least, the first 20% crews of the Gold and Ladies' ranking lists shall be given a souvenir of the event.

The prizes will be awarded to each member of a crew.

21. TITLES

The title of International 420 Class World Champion will be awarded to the first team in the Gold fleet ranking list of the World Championship.

The title of International 420 Class Ladies' World Champion will be awarded to the first team in the ranking list of the Ladies' World Championship.

The title of International 420 Class Francis Mouvet Team Racing Champion will be awarded to the first team in the ranking list of the Team Racing Championship.

22. TROPHIES

The William Sanchez Trophy will be awarded, in World and Ladies' World Championships to the highest placed teams where both helm and crew are less than 17 years of age, born 1987 or later.

The Huck Scott Memorial Cup will be awarded, in World and Ladies' Championships, to the youngest team completing the most possible races. The "youngest team" shall be defined as the team with the lowest combined ages. In the event of a tie, the team with the youngest member (skipper or crew) shall be declared the winning team.

23. ANTHEM

For the prize giving ceremony, each national team shall bring a recording of their national anthem.

24. NATIONAL FLAG

Each coach boat of a national team shall fly a 20 x 30 cm flag, displaying their national code letters, black on white.

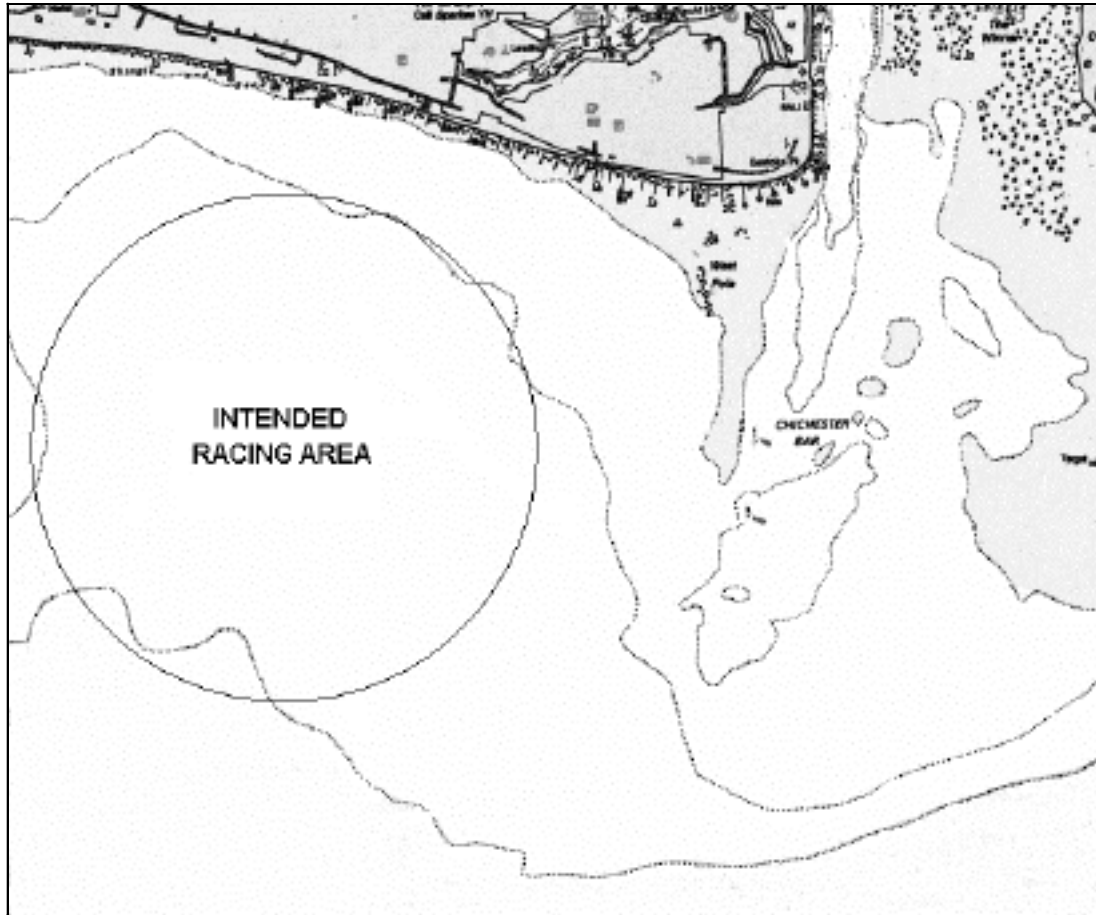
25. INSURANCE

Boats must be adequately insured including insurance against third party claims of at least £2,000,000 or the equivalent in other currencies.

Each participant warrants the suitability of his or her boat for the event.

Attachment A
RACING AREA CHART

Not to be used for navigation



Appendix B

Hayling Island 16-25 July 2003

**International 420 Class World Championship
International 420 Class Ladies World Championship
International 420 Class Francis Mouvet Team Racing Championship**

PRELIMINARY ENTRY FORM

PLEASE FULFIL IN CAPITAL LETTERS

COUNTRY	_____
REPRESENTED BY :	Name : _____ First name : _____ Position : _____ Address : _____ _____ _____ Telephone/Fax : _____ E-mail : _____

WILL ENTER TO 420 CLASS MEN WORLD CHAMPIONSHIP (MAXIMUM 7 or 14 FOR HOSTING COUNTRY) :	_____ BOATS
WILL ENTER TO 420 CLASS LADIES WORLD CHAMPIONSHIP (MAXIMUM 7 or 14 FOR HOSTING COUNTRY) :	_____ BOATS
INTEND TO COMPETE THE FRANCIS MOUVET 420 CLASS TEAM CHAMPIONSHIP :	YES / NO

DATE :

SIGNATURE :

Post Entry forms before 16 March 2003 to:

Gail Nuttall
23 CRICHEL MOUNT ROAD, POOLE,
DORSET BH14 8LT ENGLAND
gail@brackenhill.demon.co.uk

Appendix C

Hayling Island 16-25 July 2003

International 420 Class World Championship International 420 Class Ladies World Championship International 420 Class Francis Mouvet Team Racing Championship

FINAL ENTRY FORM

PLEASE FULFIL IN CAPITAL LETTERS

COUNTRY			
SAIL NUMBER			
HELMSMAN SURNAME		FIRST NAME	
DATE OF BIRTH		SEX (M/F):	
HELMSMAN ADDRESS			
PHONE -FAX -E-MAIL			
CREW SURNAME		FIRST NAME	
DATE OF BIRTH		SEX (M/F):	
CREW ADDRESS			
PHONE -FAX -E-MAIL			

We agree to be bound by the Racing Rules of Sailing, the Bye Laws of Hayling Island Sailing Club, and all other rules that govern this event including the Disclaimer of Liability in the Notice of Race, which excludes our right to claim compensation in certain circumstances. We declare that during the event we will hold a valid and current third party insurance of at least £2m or the equivalent in another currency.

All competitors who are under 18 years of age are minors in English law. By signing the entry forms, team managers shall accept responsibility 'in loco parentis' for these competitors whilst at the championship venue.

DATE : _____

SIGNATURE OF HELMSMAN

SIGNATURE OF CREW

APPROVED BY : _____ ON THE BEHALF OF THE NATIONAL 420 CLASS

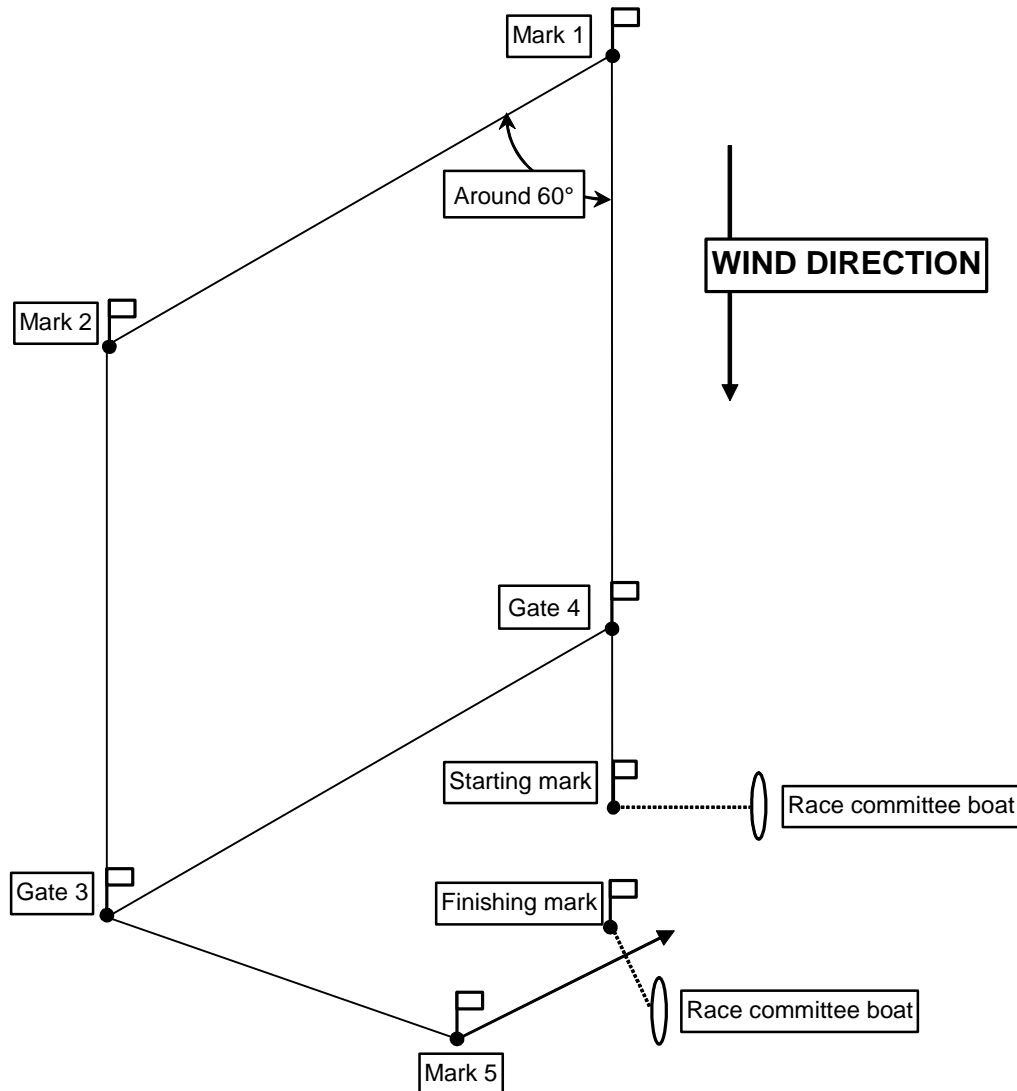
SIGNATURE OF REPRESENTATIVE

Post Entry forms before 16 June 2003 to :

Gail Nuttall
23 CRICHEL MOUNT ROAD, POOLE,
DORSET BH14 8LT ENGLAND
gail@brackenhill.demon.co.uk

Appendix D

FORMAT OF THE COURSE OF MEN & LADIES WORLD



Marks 3 and 4 shall be gates

Course for fleet A (outer loop)

- Starting line → mark 1 → mark 2 → gate 3 → mark 2 → gate 3 → mark 5 → Finishing line
- Each mark left to port except gates

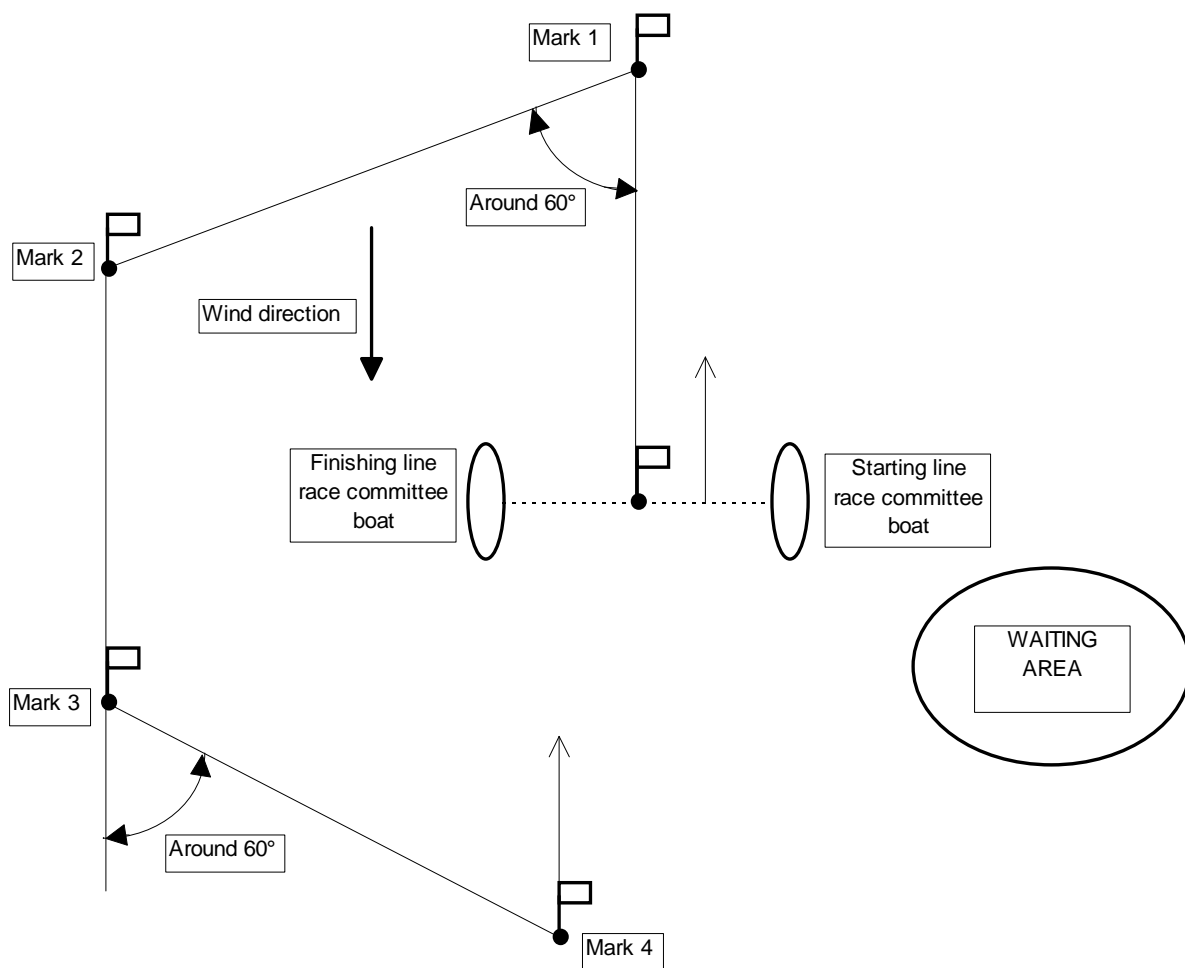
Course for fleet B (inner loop)

- Starting line → mark 1 → gate 4 → mark 1 → mark 3 → gate 3 → mark 5 → Finishing line
- Each mark left to port except gates

Appendix E

FORMAT OF THE COURSE

FOR TEAM RACING



Course :

- Starting line → mark 1 → mark 2 → mark 3 → mark 4 → Finishing line
- Each mark left to port except finishing line mark

Charter Boats

Charter boats are available from:

IBI Limited

Tel: +44 (0) 7710 130212

Fax: +44 (0)1243 780529

Email: westsussex@msn.com

- Available from Lenam, Nautivela, Naaix, Rondar.
- Measurement certificate included.
- Mast and rigging from Superspar or Proctor
- Manufacturers foils
- Launching trolley
- Delivered to HISC on 15 July.

Base charter price will be US\$ 900 or equivalent. Damage deposit US\$ 500. Orders received after 10th March 2003 will be surcharged by 50%. Boats can be delivered earlier at US\$ 95 per day, or supplied complete to your specification (please ask for a quote). Comprehensive insurance is available if required.

Weather information

Information about weather in Hayling Bay is available at Chimet: <http://www.chimet.co.uk>

Average late July sea water temperature: 18 °C

Racing area (Hayling Bay)

Tide: Flows up to 1kt springs/0.5kn neaps. Range approximately 4m springs/2m neaps.

Depth: Shallow inshore in Hayling Bay, shelving offshore to 6m (datum)

Access from HISC to Hayling Bay is via the main channel into Chichester Harbour.

Detailed navigational and tidal Information is available from Admiralty Charts:

3418 Langstone and Chichester Harbours

2037 Eastern Approaches to the Solent

Admiralty Tidal Stream Atlas:

NP337 The Solent and Adjacent Waters.

Information about these publications is available at: <http://www.ukho.gov.uk/>

Accommodation

Accommodation enquires can be made through Havant Tourist Information.

Website: <http://www.visit-hampshire.co.uk>

Email: 420visitorinfo2003@havant.gov.uk

Chandlers and repairs

There will be a chandler on site and arrangements for repairs will be available.

Catering

Hayling Island Sailing Club has full catering facilities including restaurant and snack bar. Local shops and 'Take away' food shops are approximately 2k away.

Organising authority contacts

Catherine Dodds (Chairman - British International 420 Class Association)
Gail Nuttall (General Secretary – International 420 Class Association)
Valerie Catchpole (Hayling Island Sailing Club)

420 Championship Office
Hayling Island Sailing Club (HISC)
Sandy Point, Hayling Island
Hampshire PO11 9SL, ENGLAND

Tel: + 44 (0) 23 9246 3768

Fax: + 44 (0) 23 9246 9381

Email: secretary.manager@hisc.co.uk
catherine@barnside.demon.co.uk

Website: <http://www.420worlds.org>

Press and PR Enquiries

Caroline Dodds

Tel: + 44 (0) 77 4067 5610

Email: caroline.dodds@ccc.ox.ac.uk